

Index No. 3825044

CERTIFICATE OF LOCATION OF GOVERNMENT CORNER

S/4 Corner of Section 34, Township 38, Range 25, 4TH P.M.

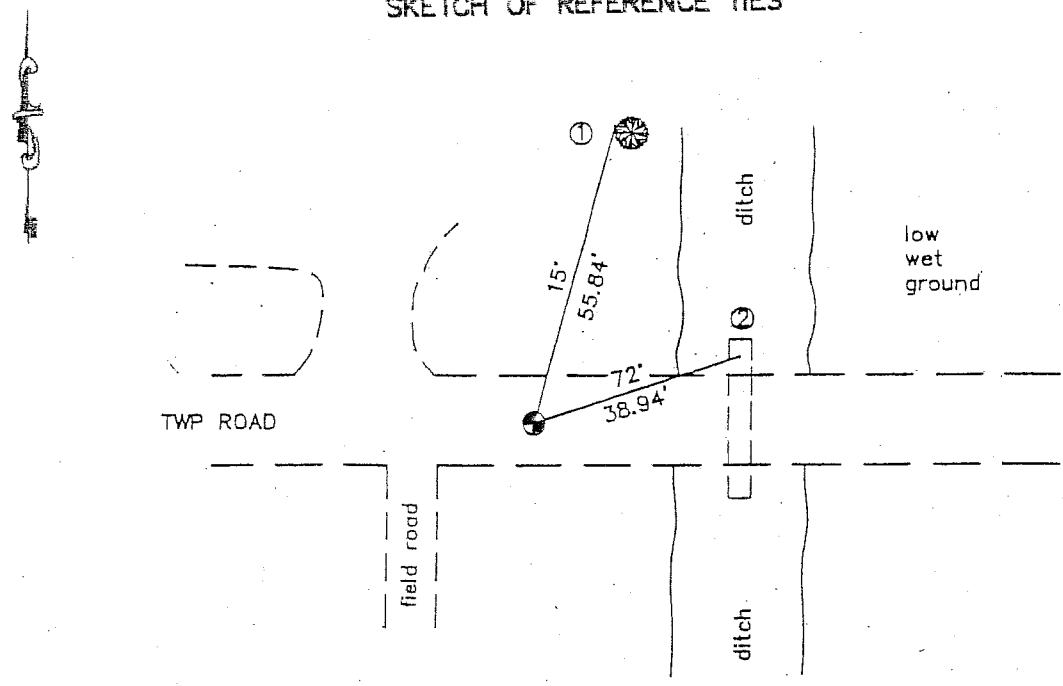
STATE OF MINNESOTA, County of KANABEC

At the corner location shown on the sketch:

Found 3/4" Rebar 1 1/2 feet No. of E set by DNR in 2002

Kanabec County U.S. Survey Feet Coordinates
NAD 1983, HARN 1996 Adjustment
Obtained by RTK GPS Observation
Northing= 101323.499
Easting= 361888.167
Note: NAD 1983, HARN 1996 Adjustment coordinates are NOT compatible with NAD 1983 coordinates
Note: 1 Meter=3937/1200 U.S. Survey Feet

SKETCH OF REFERENCE TIES



Statement of evidence relative to this corner location is on back of page.

I hereby certify that this document and the data contained herein was prepared by me or under my direct supervision.

Ernest Rud
Signature

4-5-2004
Date

Registration No. 9808

- Land Surveyor, Professional Engineer
- County Surveyor, County Engineer

OFFICE OF THE COUNTY RECORDER

County of _____

I hereby certify that this document was filed in the County Recorder's office at _____ M. on the _____ day of _____ A.D., 20____

_____ County Recorder _____ Deputy

BY _____ Deputy

DOCUMENT NO. _____

STATEMENT OF EVIDENCE

From V.N.R.

The Department of Natural Resources, Division of Lands and Minerals, contacted the following offices for information regarding this corner:

MN Secretary of State
Isanti County Recorder and Engineer
Mille Lacs County Recorder and Engineer
Polaris Land Surveying
Dale Anderson -Passe Engineering
Hansen Surveying
MN DOT in St. Cloud

- 1851 The US General Land Office field notes, on file in the Secretary of State's Office, show this corner to be marked with a post in swamp and the following bearing trees were marked:
Tamarack 4" N 51 1/2° W 27 links (17.82')
Tamarack 4" S 45° E 13 links (8.58')
- 1914 In the Surveyor's Record Book B, page 165 A.M. Holm surveyed Section 2 and states 'NW Sec. Corner established by Richard Chapman' for corner. He records a distance of 40.24 chains (2655.84') to the north quarter corner and 40.94 chains (2702.04') to the west quarter corner.
- 1916 In August R.S. Chapman filed a Re-Survey Plat of Section 36, Town 38 North- Range 26 West - 4th P.M. in the Mille Lacs County Recorders office. He shows the following information from the southeast corner of section 36 (supposed Govt. Cor.) to the north quarter corner of section 2, T.37, R.25 (Govt. Cor.): Govt Dist. 23,824.68 ft. and Re-Survey 24,024.00 ft.. [Based on the information shown on this plat, it is assumed that there were no other government corners found along this line.]
- 1999 The DNR survey crew located the northwest corner section 6 and the north quarter corner section 2. The distance between them is 23,926.42 feet which is approximately 100' longer than GLO and 100' shorter than Chapman's distance. County CIMs were found at the north quarter and northeast corners of section 6. Lost positions were computed for the corners along the north line of sections 3, 4 and 5. The half mile proportional distance is 2654.77 feet. Iron pipes were found at the north quarter and northeast corners of section 5 that fit the proportional position well.
- 2000 In March, the DNR survey crew set the corners along the north line of sections 3 and 4 on line and at the lost position between the northeast corner section 5 and the north quarter corner section 2. The proportion distance is 2654.73'. A 3/4" x 24" rebar with an aluminum "DNR Survey Marker" cap was set to mark the corner.

For more information on our survey in this area please contact MN DNR, Division of Lands and Minerals, Survey Section, 1601 Minnesota Drive, Brainerd, MN 56401.

In Feb 2004 we did a survey around Sections 27, 28, 34 & 35 to locate existing monumentation & tie in lines of occupation. We found the rebar set by the D.N.R. & established Kanabec County Coordinates using G.R.S. Equipment.

Ernest J. Reed