

# CERTIFICATE OF LOCATION OF GOVERNMENT CORNER

SOUTH QUARTER Corner of Section 32, Township 38, Range 25, 4TH P.M.  
 STATE OF MINNESOTA, County of KANABEC

At the corner location shown on the sketch:  
 8/19/2009 FOUND 1" IRON PIPE AND ESTABLISHED KANABEC  
 COUNTY COORDINATES

Kanabec County U.S. Survey Feet Coordinates  
 NAD 1983, HARN 1996 Adjustment  
 Obtained by RTK GPS Observation

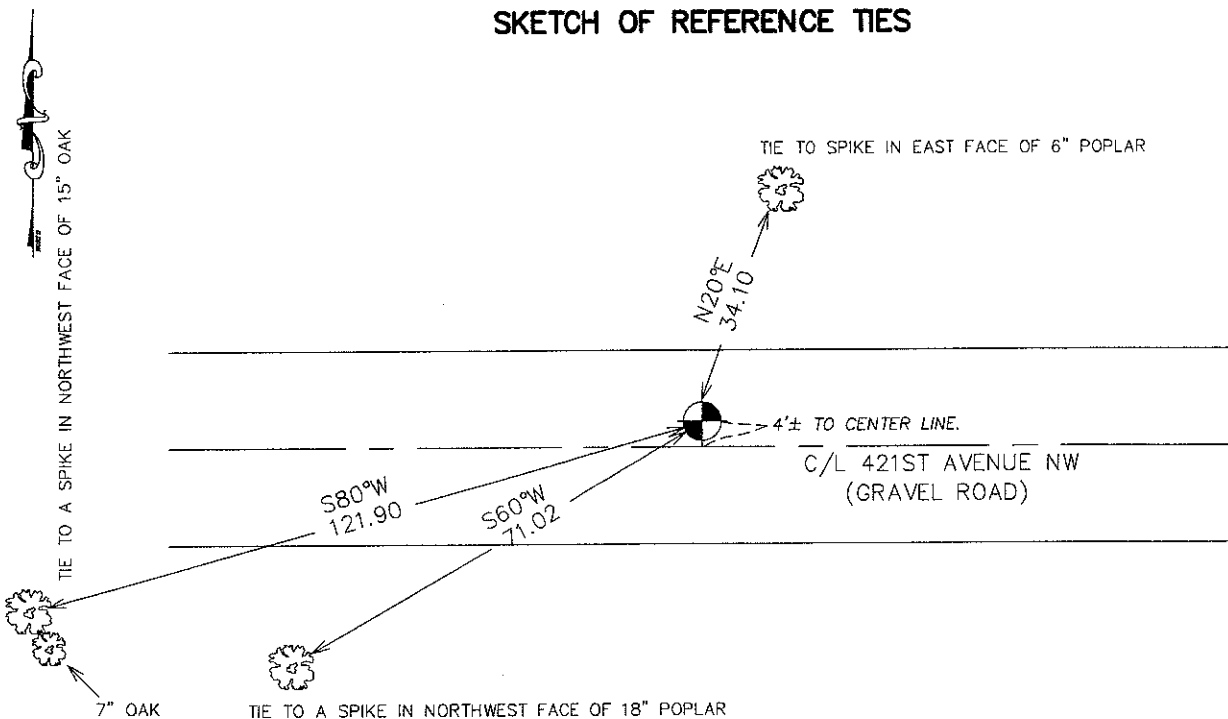
Northing= 101820.981

Easting= 351280.531

Note: NAD 1983, HARN 1996 Adjustment  
 coordinates are NOT compatible with  
 NAD 1983 coordinates

Note: 1 Meter=3937/1200 U.S. Survey Feet

## SKETCH OF REFERENCE TIES



Statement of evidence relative to this corner location is on back of page.

I hereby certify that this document and the data contained herein was prepared by me or under my direct supervision.

*Ernest Blund*  
 Signature

1-26-2010  
 Date

Registration No. 9808

- Land Surveyor,       Professional Engineer  
 County Surveyor,     County Engineer

### OFFICE OF THE COUNTY RECORDER

County of \_\_\_\_\_

I hereby certify that this document was filed in the County Recorder's office at \_\_\_\_\_ M. on the \_\_\_\_\_ day of \_\_\_\_\_ A.D., 20\_\_\_\_

County Recorder \_\_\_\_\_

BY \_\_\_\_\_ Deputy

**DOCUMENT NO.** \_\_\_\_\_

S 1/4 CORNER, SEC. 32, T38, R25

**STATEMENT OF EVIDENCE**

**1916**

**IN AUGUST R.S. CHAPMAN FILED A RESURVEY OF SEC. 36, T38N, R26W, 4TH P.M. IN MILLE LACS COUNTY RECORDERS OFFICE. HE SHOWS THE FOLLOWING INFORMATION FROM THE SE CORNER OF SEC 36 (SUPPOSED GOVT. COR.) TO THE NORTH QUARTER CORNER OF SEC 2, T37, R25 (GOVT. COR): GOVT. DIST. 23,824.68 FEET AND RESURVEY 24,024.00 FEET. (BASED ON THE INFORMATION SHOWN ON THIS PLAT, IT IS ASSUMED THAT THERE WERE NO GOVERNMENT CORNERS FOUND ALONG THIS LINE.)**

**1999**

**THE DNR SURVEY CREW LOCATED THE NW CORNER OF SEC 6 AND THE NORTH QUARTER CORNER OD SEC 2. THE DISTANCE BETWEEN THEM IS 23,926.42 FEET WHICH IS APPROXIMATELY 100' LONGER THAN GLO AND 100' SHORTER CHAPMAN'S DISTANCE. COUNTY CIM'S WERE FOUND AT THE NORTH QUARTER AND NORTHEAST CORNERS OF SEC 6. LOST POSITIONS WERE COMPUTED FOR THE CORNERS ALONG THE NORTH LINE OD SECTIONS 3, 4 AND 5. THE HALF MILE PROPORTIONAL IS 2654.77 FEET. A 1-1/4" IRON PIPE WAS FOUND AT THE NORTH QUARTER CORNER OF SEC 5 AT A DISTANCE OF 2654.93 FEET FROM THE NORTHWEST CORNER AND A 1-1/2" IRON PIPE WAS FOUND FOR THE NORTHEAST CORNER OF SEC 5 AT A DISTANCE OF 2654.80 FEET FROM THE NORTH QUARTER CORNER. THE IRON PIPE WAS ACCEPTED AS MARKING THE CORNER AND TIES WERE TAKEN.**

**FOR MORE INFORMATION ON THE ABOVE SAID SURVEY IN THIS AREA PLEASE CONTACT MN DNR, DIVISION OF LANDS AND MINERALS, SURVEY SECTION, 1601 MINNESOTA DRIVE, BRAINERD, MN 56401.**

**ON AUGUST 19, 2009, E.G. RUD AND SONS, INC. FOUND THIS MONUMENT AND KANABEC COUNTY COORDINATES WERE ESTABLISHED ON THIS POSITION USING G.P.S. EQUIPMENT.**