

# CERTIFICATE OF LOCATION OF GOVERNMENT CORNER

SOUTHEAST Corner of Section 31, Township 38, Range 25, 4TH P.M.  
STATE OF MINNESOTA, County of KANABEC

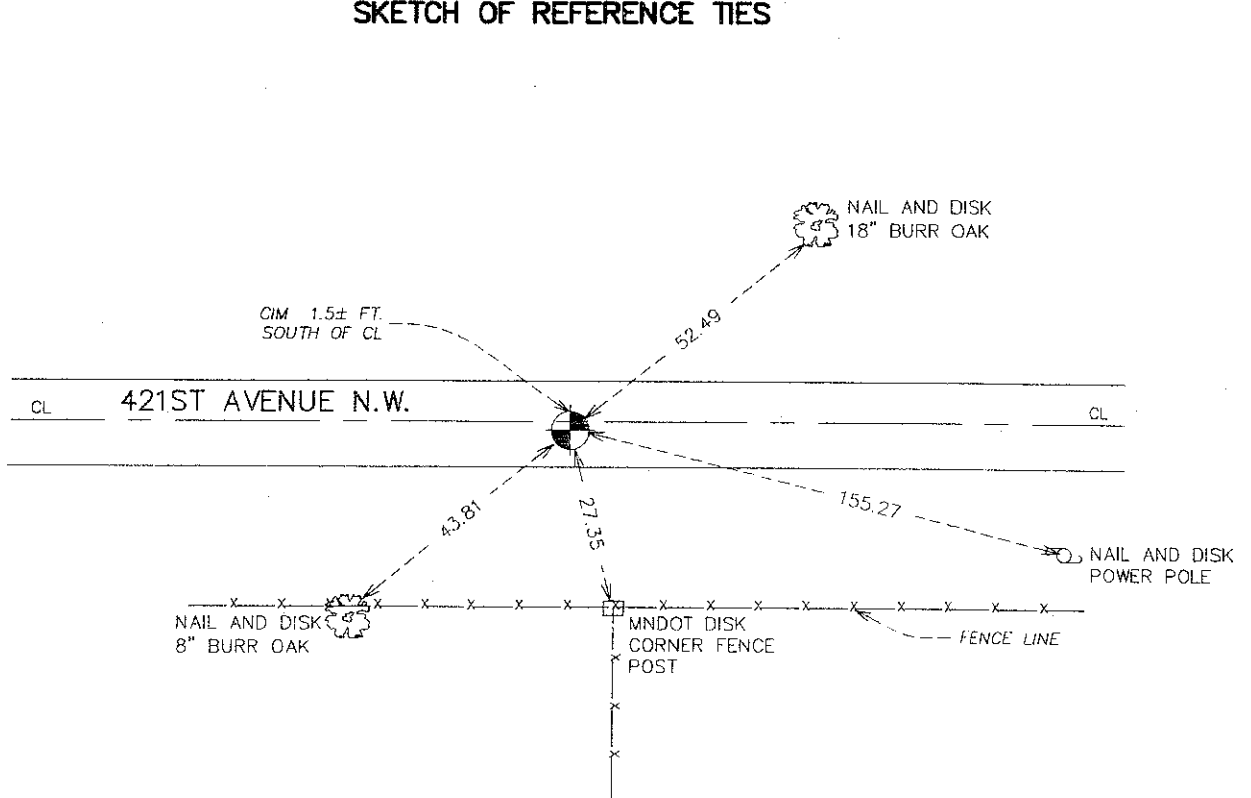
At the corner location shown on the sketch:  
FOUND ISANTI COUNTY CAST IRON MONUMENT DOWN 0.8 FT.

Kanabec County U.S. Survey Feet Coordinates  
NAD 1983, HARN 1996 Adjustment  
Obtained by RTK GPS Observation

Northing= 101944.59  
Easting= 348628.35

Note: NAD 1983, HARN 1996 Adjustment  
coordinates are NOT compatible with  
NAD 1983 coordinates  
Note: 1 Meter=3937/1200 U.S. Survey Feet

## SKETCH OF REFERENCE TIES



Statement of evidence relative to this corner location is on back of page.

I hereby certify that this document and the data contained herein was prepared by me or under my direct supervision.

Ernest J. Bluf  
Signature

10-1-2008  
Date

Registration No. Minn No 9808

Land Surveyor,      [ ] Professional Engineer

[ ] County Surveyor,      [ ] County Engineer

### OFFICE OF THE COUNTY RECORDER

County of \_\_\_\_\_

I hereby certify that this document was filed in the County Recorder's office at \_\_\_\_\_ M. on the \_\_\_\_\_ day of \_\_\_\_\_ A.D., 20\_\_\_\_

County Recorder \_\_\_\_\_

BY \_\_\_\_\_ Deputy

DOCUMENT NO. \_\_\_\_\_

SOUTHEAST CORNER SECTION 31, TOWNSHIP 38, RANGE 25

**STATEMENT OF EVIDENCE**

FROM ISANTI COUNTY

THE DIMENSION FROM THIS CORNER POSITION, ALONG THE NORTH AND EAST LINES OF SECTION 6, TOWNSHIP 37, RANGE 25, CHECK REASONABLY CLOSE TO THE GOVERNMENT LAND OFFICE DIMENSIONS. NO OTHER EVIDENCE AVAILABLE.

THIS CORNER POSITION WAS USED BY THE MINNESOTA DEPARTMENT OF NATURAL RESOURCES FOR THE SUBDIVISION OF SECTION 5, TOWNSHIP 37, RANGE 25 AND BY ME FOR THE SUBDIVISION OF SECTION 6.

ON APRIL 8, 2008 E.G. RUD & SONS, INC. FOUND THIS MONUMENT AND KANABEC COUNTY COORDINATES WERE ESTABLISHED ON THIS POSITION USING GLOBAL POSITIONING SYSTEM (G.P.S.) EQUIPMENT.