

CERTIFICATE OF LOCATION OF GOVERNMENT CORNER

SOUTHWEST Corner of Section 31, Township 38, Range 25, 4TH P.M.
 STATE OF MINNESOTA, County of KANABEC

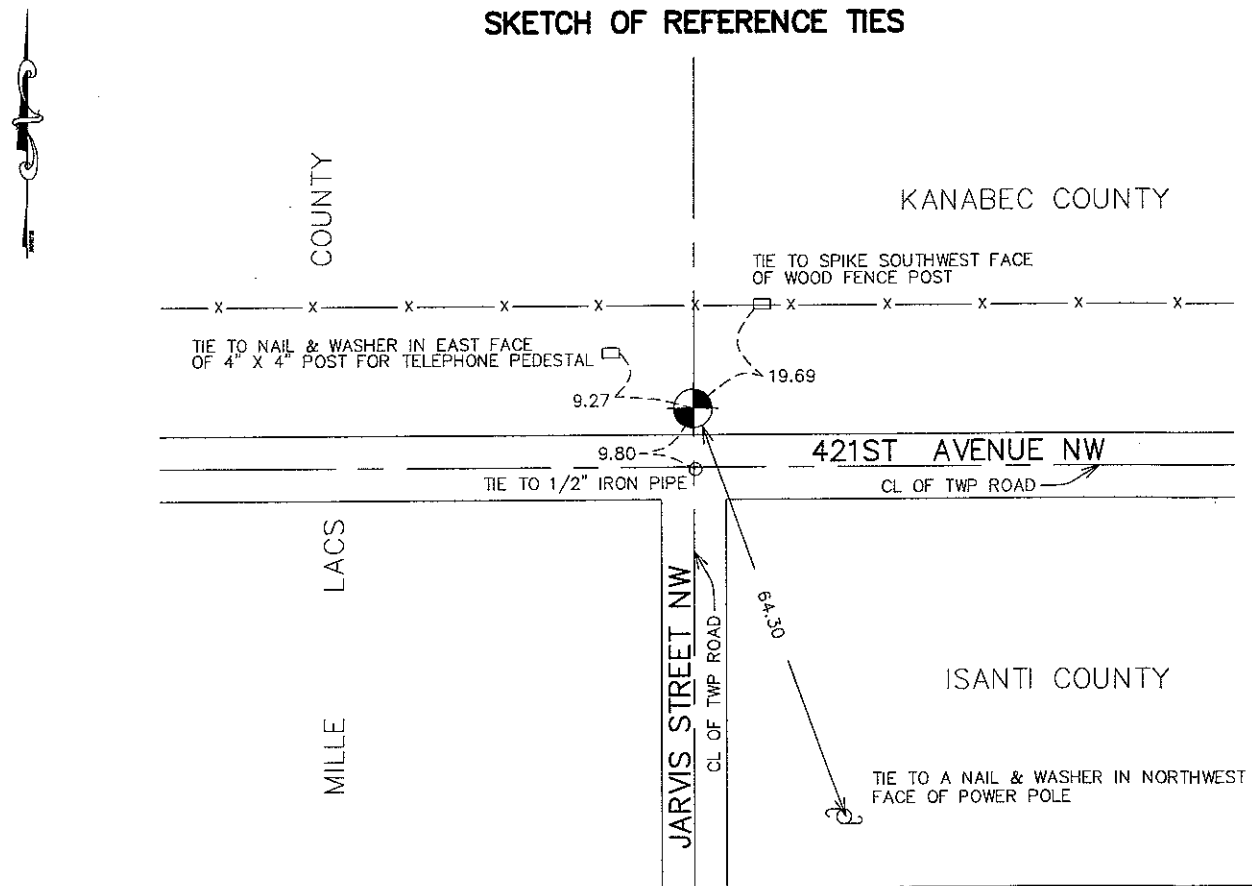
At the corner location shown on the sketch:
 6" X 6" GRANITE MONUMENT, ACCORDING TO LAND CORNER CERT.
 BY DENNIS D. PEDERSON, MRLS #16095, FOR THE NE CORNER OF
 SEC 1, T37, R26, MILLE LACS COUNTY.

Kanabec County U.S. Survey Feet Coordinates
 NAD 1983, HARN 1996 Adjustment
 Obtained by RTK GPS Observation

Northing= 102192.28
 Easting= 343286.60

Note: NAD 1983, HARN 1996 Adjustment
 coordinates are NOT compatible with
 NAD 1983 coordinates
 Note: 1 Meter=3937/1200 U.S. Survey Feet

SKETCH OF REFERENCE TIES



Statement of evidence relative to this corner location is on back of page.

I hereby certify that this document and the data contained herein was prepared by me or under my direct supervision.

Ernest J. Rad 1-26-2010
 Signature Date

Registration No. 9808

Land Surveyor, Professional Engineer

County Surveyor, County Engineer

OFFICE OF THE COUNTY RECORDER

County of _____

I hereby certify that this document was filed in the County Recorder's office at _____ M. on the _____ day of _____ A.D., 20____

County Recorder _____

BY _____ Deputy

DOCUMENT NO. _____

SW CORNER, SEC. 36, T38, R25

STATEMENT OF EVIDENCE

GRANITE MONUMENT SET BY R.S. CHAPMAN IN 1916, FOUND BY BOGART, PETERSON & ASSOCIATES IN 2003 AND ACCEPTED BY ISANTI COUNTY SURVEYOR IN 2007.

GRANITE MONUMENT LOCATED BY E.G. RUD AND SONS, INC. IN AUGUST 2009 AND KANABEC COUNTY COORDINATES WERE ESTABLISHED ON THIS POSITION USING G.P.S. EQUIPMENT.