

# CERTIFICATE OF LOCATION OF GOVERNMENT CORNER

WEST QUARTER Corner of Section 31, Township 38, Range 25, 4TH P.M.

STATE OF MINNESOTA, County of KANABEC

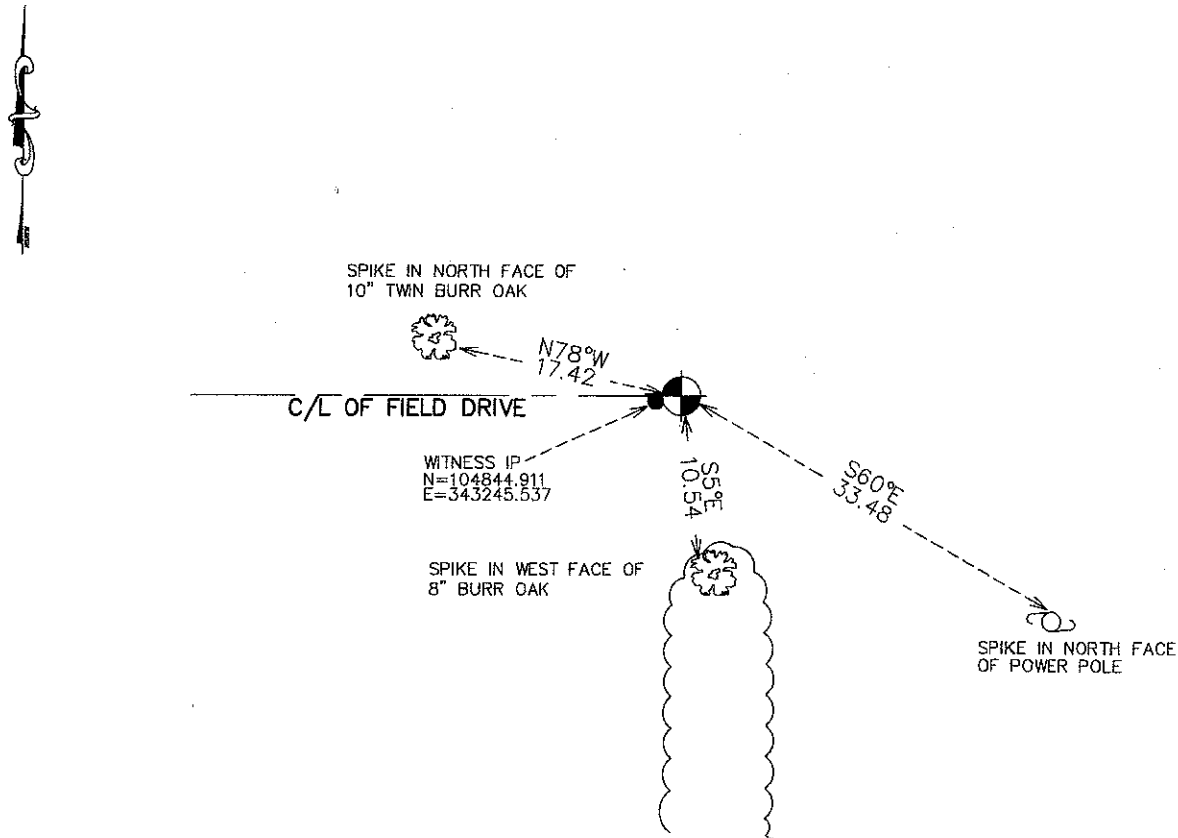
At the corner location shown on the sketch:  
 ON 10/5/10 FOUND NATIVE BOULDER WITH  
 CHISELED "X" AND SET A 1/2" WITNESS IRON PIPE AT  
 WEST SIDE OF SANDSTONE

Kanabec County U.S. Survey Feet Coordinates  
 NAD 1983, HARN 1996 Adjustment  
 Obtained by RTK GPS Observation

Northing= 104844.818  
 Easting= 343245.912

Note: NAD 1983, HARN 1996 Adjustment  
 coordinates are NOT compatible with  
 NAD 1983 coordinates  
 Note: 1 Meter=3937/1200 U.S. Survey Feet

### SKETCH OF REFERENCE TIES



Statement of evidence relative to this corner location is on back of page.

I hereby certify that this document and the data contained herein was prepared by me or under my direct supervision.

Ernest Klud 10-17-2011  
 Signature Date

Registration No. 9808

- Land Surveyor,  Professional Engineer  
 County Surveyor,  County Engineer

### OFFICE OF THE COUNTY RECORDER

County of \_\_\_\_\_

I hereby certify that this document was filed in the County Recorder's office at \_\_\_\_\_ M. on the \_\_\_\_\_ day of \_\_\_\_\_ A.D., 20\_\_\_\_

County Recorder \_\_\_\_\_

BY \_\_\_\_\_ Deputy

DOCUMENT NO. \_\_\_\_\_

W1/4 CORNER, SEC. 31, T38, R25

**STATEMENT OF EVIDENCE**

**1849 - THEODORE CONKEY, U.S. DEPUTY SURVEYOR, RAN THE TOWNSHIP LINE BETWEEN RANGE 25 AND 26.**

**DECEMBER 1851 - DANIEL HIGBEE, U.S. DEPUTY SURVEYOR, CORRECTED PART OF THIS TOWNSHIP LINE.**

**APRIL 1909 - JOHN NELSON, KANABEC COUNTY SURVEYOR, RAN AN SURVEY FROM THE W 1/4 CORNER OF SEC. 31 TO THE NW CORNER OF SEC. 19 AND SET SANDSTONES AT SEC. CORNERS AND 1/4 CORNERS. NELSON STARTED AT THE W 1/4 CORNER OF SEC. 31 BEING A GOOD GOV'T CORNER AND NO SANDSTONE WAS SET AT THIS CORNER.**

**MAY 1916 - R.S. CHAPMAN RAN A SURVEY IN SEC. 25 AND 36 IN T. 38, R. 26 AND RECORDED HIS SURVEY AS SECTION PLAT NO. 1 AND SECTION PLAT NO. 2. CHAPMAN STARTED HIS SURVEY AT THIS CORNER WHICH HE FOUND A POST HOLE WHICH FIT THE TIES TO THE ORIGINAL BEARING TREES. AT THE COMPLETION OF HIS SURVEY CHAPMAN SET A NATIVE BOULDER WITH AN INSCRIBED "X".**

**OCTOBER 2010 - CONDUCTED A SEARCH AT A COMPUTED SEARCH AREA FOR THIS CORNER. BY PROBING, A NATIVE BOULDER WITH AN INSCRIBED "X" WAS FOUND 2" BELOW THE SURFACE. THIS FIT THE OCCUPATION LINES AND DISTANCE MEASURED BY CHAPMAN. A 1/2" IRON PIPE WAS SET ON THE WEST SIDE OF THE BOULDER, TIES WERE TAKEN AND KANABEC COUNTY COORDINATES WERE ESTABLISHED ON THIS POSITION.**