

# CERTIFICATE OF LOCATION OF GOVERNMENT CORNER

NORTHWEST Corner of Section 30, Township 38, Range 25, 4TH P.M.

STATE OF MINNESOTA, County of KANABEC

At the corner location shown on the sketch:

FOUND 14" X 16" X 12" SANDSTONE MONUMENT WITH AN "X" CHISELED ON TOP DOWN 5 FT. AND SET A 1/2" IRON PIPE WITH ALUMINUM CAP AT SURFACE.

Kanabec County U.S. Survey Feet Coordinates  
NAD 1983, HARN 1996 Adjustment  
Obtained by RTK GPS Observation

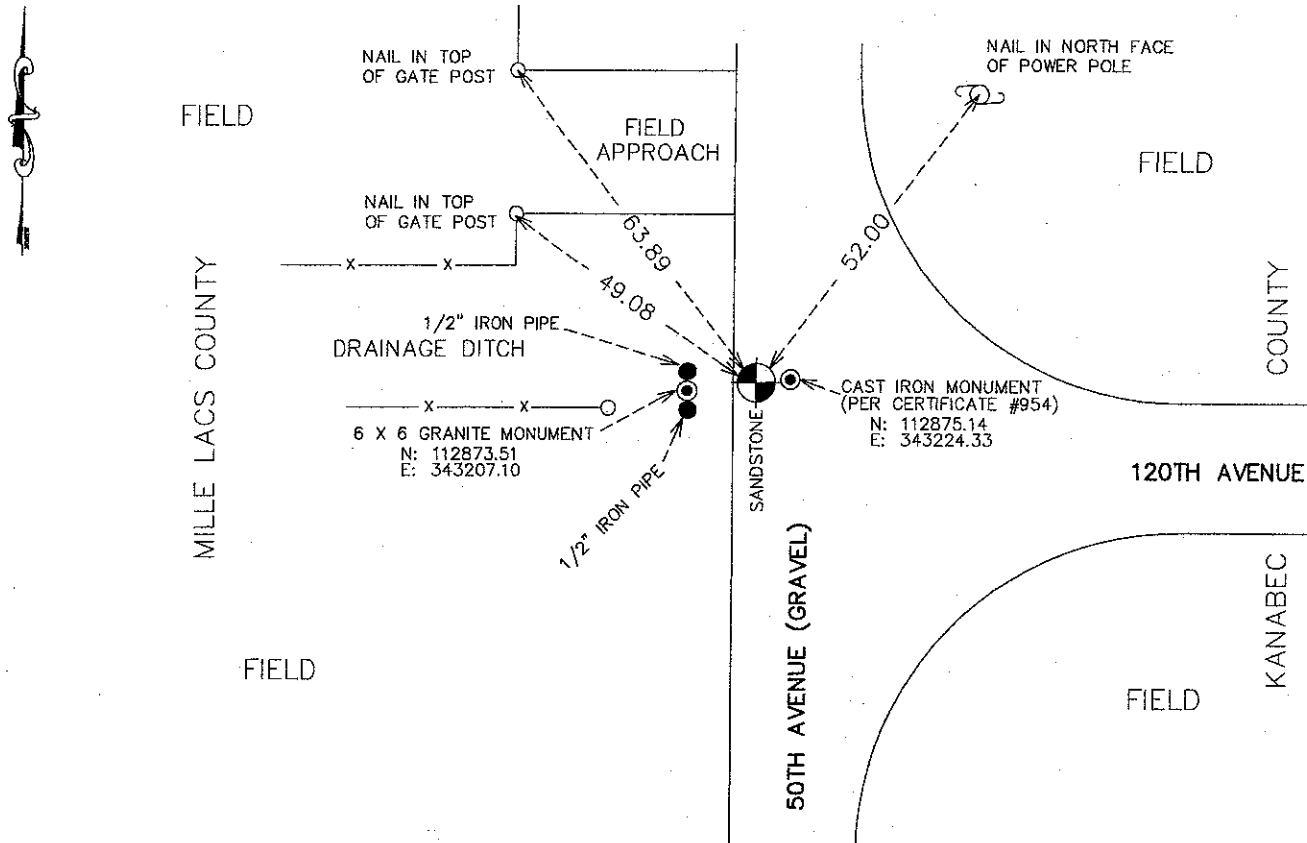
Northing= 112875.27

Easting= 343221.68

Note: NAD 1983, HARN 1996 Adjustment coordinates are NOT compatible with NAD 1983 coordinates

Note: 1 Meter=3937/1200 U.S. Survey Feet

### SKETCH OF REFERENCE TIES



Statement of evidence relative to this corner location is on back of page.

I hereby certify that this document and the data contained herein was prepared by me or under my direct supervision.

*Ernest J. Rud*  
Signature

10-17-2011  
Date

Registration No. 9808

Land Surveyor,  Professional Engineer

County Surveyor,  County Engineer

### OFFICE OF THE COUNTY RECORDER

County of \_\_\_\_\_

I hereby certify that this document was filed in the County Recorder's office at \_\_\_\_\_ M. on the \_\_\_\_\_ day of \_\_\_\_\_ A.D., 20\_\_\_\_

County Recorder \_\_\_\_\_

BY \_\_\_\_\_ Deputy

DOCUMENT NO. \_\_\_\_\_

NW CORNER, SEC. 30, T38, R25

STATEMENT OF EVIDENCE FROM MILLE LACS COUNTY CERTIFICATE NO. 1239

ORIGINAL CORNER WAS BY DANIEL HIGBEE IN DEC. 1851. NO EVIDENCE OF HIS POST OR ITS ACCESSORIES WERE FOUND.

IN JUNE 1916 MILLE LACS COUNTY SURVEYOR, R.S. CHAPMAN PREPARED A SECTION SUBDIVISION OF SEC. 25, T.38, R.26 (SEE RE-SURVEY PLAT NO. 1 AT THE MILLE LACS COUNTY RECORDER'S OFFICE). FROM HIS BREAKDOWN IT WAS DETERMINED HE FOUND OR ESTABLISHED ALL OF THE SECTION AND QUARTER CORNERS ON SEC. 25.

IN MAY-JUNE 1916, MILLE LACS COUNTY SURVEYOR, R.S. CHAPMAN PREPARED A SECTION SUBDIVISION OF SEC. 36, T.38, R.26 (SEE RE-SURVEY PLAT NO. 2 IN THE MILLE LACS COUNTY RECORDER'S OFFICE). FROM HIS BREAKDOWN IT WAS DETERMINED HE FOUND OR ESTABLISHED ALL OF THE SECTION AND QUARTER CORNERS ON SEC. 36.

IN 2003 WE DID A SURVEY IN SECTION 25 REQUIRING A SECTION BREAKDOWN. WE FOUND A 6" X 6" CUT GRANITE ROCK, BELIEVED TO BE R.S. CHAPMAN'S 1916 MONUMENT AT THE NE CORNER OF SEC. 25. WE LEFT THE GRANITE IN PLACE, TIED AND SET 1/2" IRON PIPES ON THE NORTH AND SOUTH EDGES OF THE FOUND GRANITE.

ON APRIL 20, 2010, E.G. RUD AND SONS, INC. FOUND THIS GRANITE MONUMENT. KANABEC COUNTY COORDINATES WERE ESTABLISHED ON THIS POSITION.

JOHN NELSON, KANABEC COUNTY SURVEYOR, RAN A SURVEY FROM THE SW CORNER OF SEC. 30 TO THE NW CORNER OF SEC. 19 ON APRIL 15, 1909 AND SET SANDSTONE MONUMENTS AT ALL THE SECTION CORNERS AND QUARTER CORNERS. R.S. CHAPMAN FOUND SANDSTONES AT THE SW CORNER OF SEC. 30, THE NW CORNER OF SEC. 30 AND THE NW CORNER OF SEC. 19. CHAPMAN DID NOT HONOR THESE SANDSTONES AND SET NEW GRANITES USING DOUBLE PROPORTIONATE MEASUREMENTS. THIS IS NOT THE PROPER METHOD FOR A TOWNSHIP LINE. NELSON'S AND CHAPMAN'S MEASUREMENTS ALONG THE WEST LINE OF SECTIONS 19 AND 30 AGREED WITHIN 3 FEET OF EACH OTHER.

ON AUG. 18, 2011 AN EXCAVATION WAS MADE AT THE INTERSECTION OF THE CENTERLINES OF THE ROADS AT THIS LOCATION. A CAST IRON MONUMENT SET BY MIKE TRUNK IN 2002 WAS FOUND 4" BELOW THE SURFACE. THIS MONUMENT WAS TIED OUT AND THE EXCAVATION CONTINUED. AT 5 FT. BELOW THE SURFACE A 14" X 16" X 12" SANDSTONE WITH A SCRIBED "X" WAS FOUND. THIS FIT DISTANCES RECORDED BY CHAPMAN. STONE WAS TIED OUT AND EXCAVATION CONTINUED. NO FURTHER EVIDENCE WAS FOUND. SANDSTONE WAS REPLACED AND NEW MONUMENT WAS SET AT THE SURFACE. TIES WERE TAKEN AND KANABEC COUNTY COORDINATES WERE ESTABLISHED ON THIS POSITION.

THE SANDSTONE WAS CONSIDERED TO BE THE BEST EVIDENCE FOR THE PERPETUATION OF THIS CORNER.