

CERTIFICATE OF LOCATION OF GOVERNMENT CORNER

WEST QUARTER Corner of Section 19, Township 38, Range 25, 4TH P.M.
 STATE OF MINNESOTA, County of KANABEC

At the corner location shown on the sketch:
 ON APR. 8, 2008 FOUND CAST IRON MONUMENT

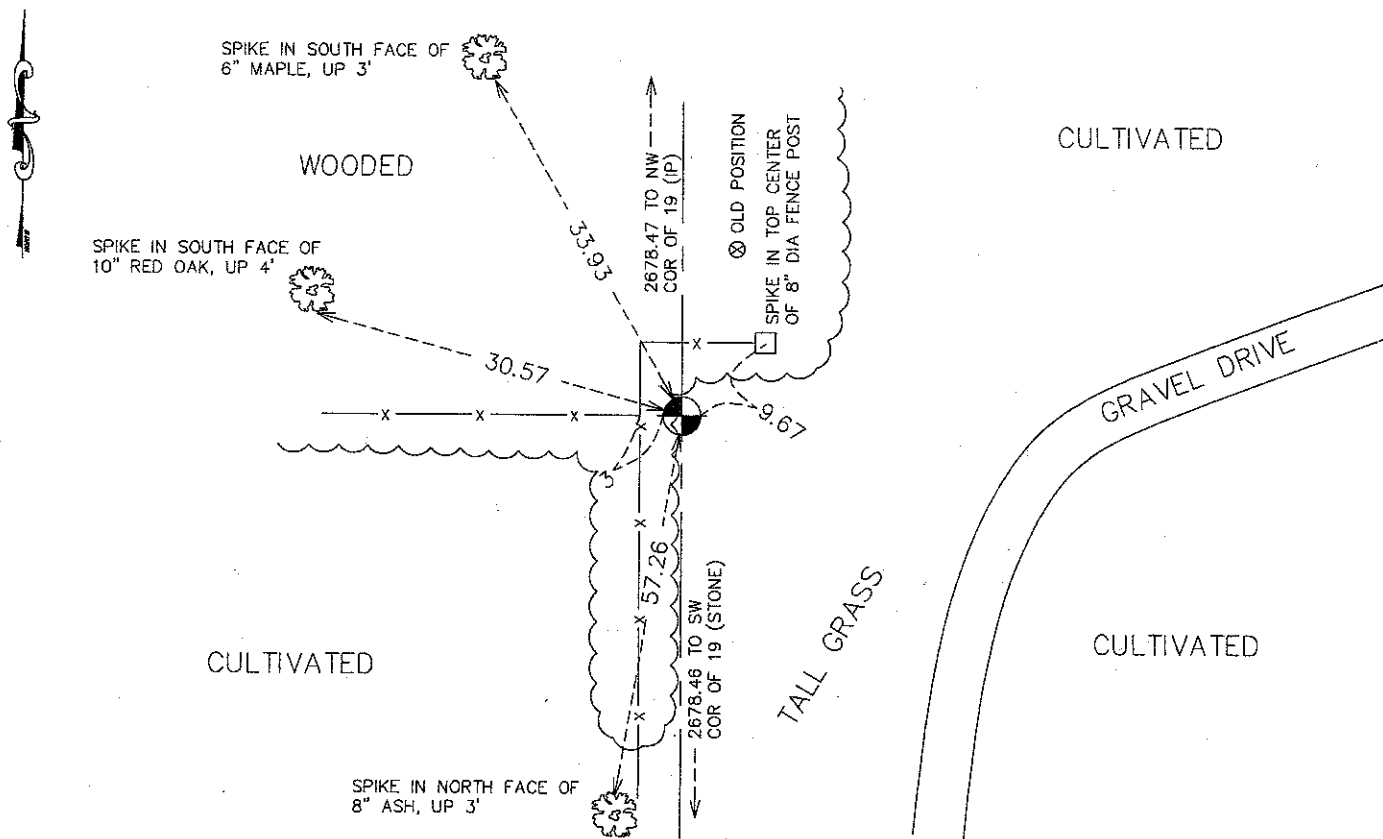
Kanabec County U.S. Survey Feet Coordinates
 NAD 1983, HARN 1996 Adjustment
 Obtained by RTK GPS Observation

Northing= 115551.23
 Easting= 343146.78

Note: NAD 1983, HARN 1996 Adjustment coordinates are NOT compatible with NAD 1983 coordinates

Note: 1 Meter=3937/1200 U.S. Survey Feet

SKETCH OF REFERENCE TIES



Statement of evidence relative to this corner location is on back of page.

I hereby certify that this document and the data contained herein was prepared by me or under my direct supervision.

Ernest [Signature]
 Signature

11-26-2010
 Date

Registration No. 9808

Land Surveyor, Professional Engineer
 County Surveyor, County Engineer

OFFICE OF THE COUNTY RECORDER

County of _____

I hereby certify that this document was filed in the County Recorder's office at _____ M. on the _____ day of _____ A.D., 20____

County Recorder _____

BY _____ Deputy

DOCUMENT NO. _____

W1/4 CORNER, SEC. 19, T38, R25

STATEMENT OF EVIDENCE

1849 THEODORE CONKEY, U.S. DEPUTY SURVEYOR, RAN THE TOWNSHIP LINE FOR THE GENERAL LAND OFFICE (GLO) AND SET A POST AT THE SUBJECT CORNER.

IN DEC. OF 1851, DANIEL HIGBEE, U.S. DEPUTY SURVEYOR FOR THE GLO, CORRECTED PART OF THE EAST LINE OF THIS TOWNSHIP.

1916 R.S. CHAPMAN (RSC), COUNTY SURVEYOR, RESURVEYED SEC. 25, T.38, R.26 AS SECTION PLAT #1. HE RE-ESTABLISHED THE NE CORNER OF SEC. 25 (SE CORNER OF SEC. 24) AND SET A GRANITE STONE THERE. HIS MAP DEPICTS A DISTANCE OF 5356.8 FROM THE SE CORNER OF SEC. 24 TO THE NE CORNER OF SEC. 24. NO MENTION IS MADE OF THE SUBJECT CORNER.

IN 2002, MIKE TRUNK (LS #18434) RE-ESTABLISHED THE SE CORNER OF SEC. 24 AT OCCUPATION LINES (DOC. #954) AND ALSO RE-ESTABLISHED SUBJECT CORNER. (REFERENCE CORNER TIE DOCUMENT #953)

RUM RIVER SURVEYORS IN 2004 FOUND RSC'S GRANITE STONE AT THE SE CORNER OF SEC. 24. THE GRANITE STONE WAS 1.5 FEET SOUTH AND 17.2 FEET WEST OF THE POSITION NOTED ON DOCUMENT #954. THIS CORNER IS CURRENTLY BEING CERTIFIED.

IN NOV. OF 2006, BOGART, PEDERSON & ASSOCIATES (BPA) LOCATED THE STONE AT THE SE CORNER OF SEC. 24 AND AN IRON PIPE AT THE NE CORNER OF SEC. 24, WHICH HAS BEEN USED BY AREA SURVEYORS AND IS CURRENTLY BEING CERTIFIED. THE DISTANCE BETWEEN THESE TWO MONUMENTS MEASURED 5356.93 WHICH COMPARES EXTREMELY WELL WITH RSC'S DISTANCE. BPA RE-ESTABLISHED AND RECERTIFIED THE SUBJECT CORNER AT A LOST POSITION WHICH WORKS VERY WELL WITH OCCUPATION RUNNING TO THE WEST AND EAST. REFERENCE TIES WERE TAKEN AT THIS TIME. THIS POSITION IS 26 FEET SOUTH AND 8.5 FEET WEST OF THE POSITION NOTED ON DOCUMENT #953. MIKE TRUNK AGREED WITH THIS SHIFT IN HOLDING TO THE RSC DATA.

ON APR. 8, 2008, E.G. RUD AND SONS, INC. FOUND THIS MONUMENT AND ESTABLISHED KANABEC COUNTY COORDINATES ON THIS POSITION USING GPS EQUIPMENT.