

CERTIFICATE OF LOCATION OF GOVERNMENT CORNER

NORTHWEST Corner of Section 19, Township 38, Range 25, 4TH P.M.

STATE OF MINNESOTA, County of KANABEC

At the corner location shown on the sketch:
 1/2" IRON PIPE WITH ALUMINUM CAP STAMPED "MILLE LACS
 COUNTY LAND MARKER"

Kanabec County U.S. Survey Feet Coordinates
 NAD 1983, HARN 1996 Adjustment
 Obtained by RTK GPS Observation

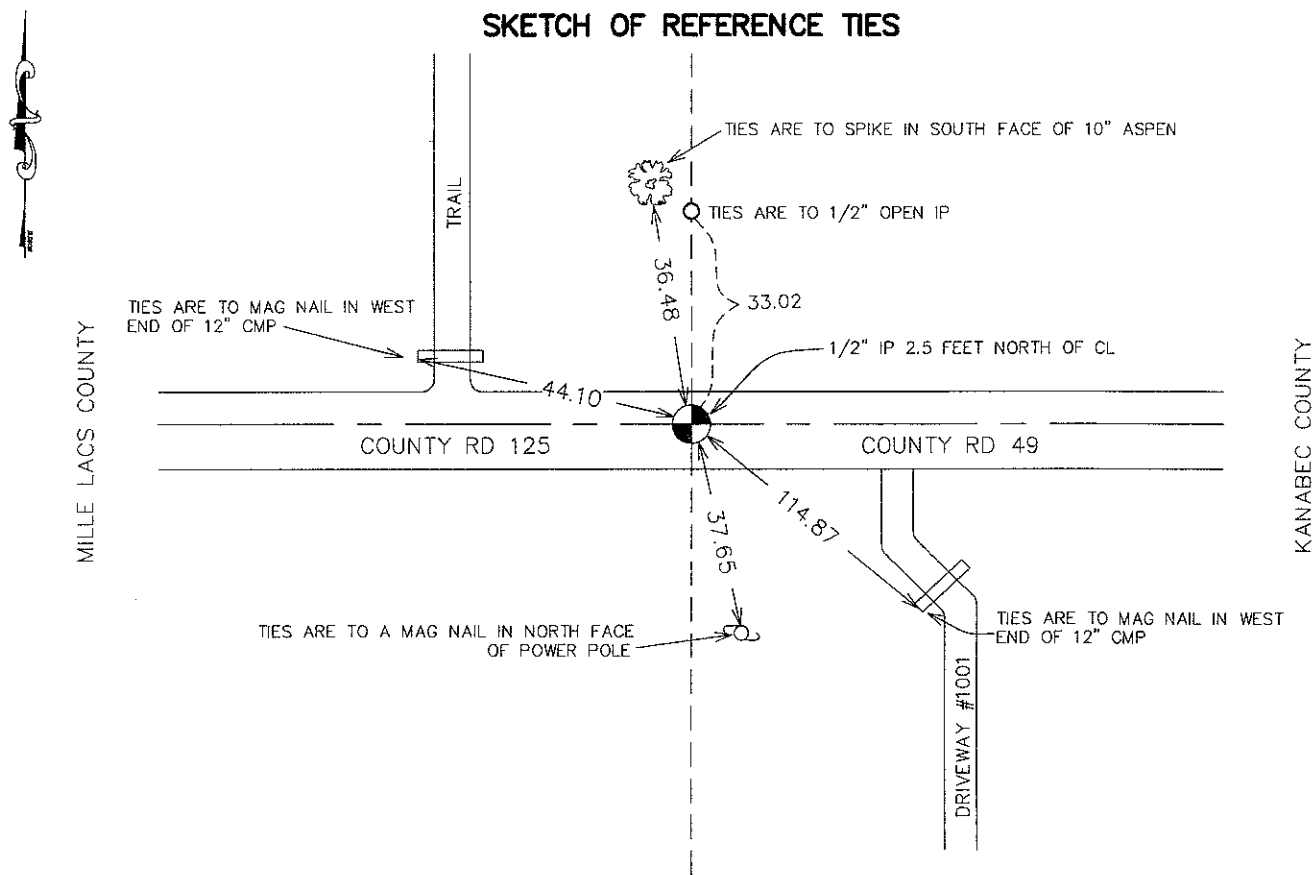
Northing= 118229.02

Easting= 343086.39

Note: NAD 1983, HARN 1996 Adjustment
 coordinates are NOT compatible with
 NAD 1983 coordinates

Note: 1 Meter=3937/1200 U.S. Survey Feet

SKETCH OF REFERENCE TIES



Statement of evidence relative to this corner location is on back of page.

I hereby certify that this document and the data contained herein was prepared by me or under my direct supervision.

Ernest J. Red
 Signature

1-26-2010
 Date

Registration No. 9808

Land Surveyor, Professional Engineer

County Surveyor, County Engineer

OFFICE OF THE COUNTY RECORDER

County of _____

I hereby certify that this document was filed in the County Recorder's office at _____ M. on the _____ day of _____ A.D., 20____

County Recorder _____

BY _____ Deputy

DOCUMENT NO. _____

NW CORNER, SEC. 19, T38, R25

STATEMENT OF EVIDENCE

NORTHEAST CORNER OF SECTION 24, T38N, R26W, 4TH PRINCIPAL MERIDIAN, BORGHOLM TOWNSHIP, MILLE LACS COUNTY, MINNESOTA.

1849 THEODORE CONKEY, U.S. DEPUTY SURVEYOR, RAN A TOWNSHIP LINE FOR THE GENERAL LAND OFFICE (GLO) AND SET A POST AT THE SUBJECT CORNER..

IN DECEMBER OF 1851, J.M. MARSHALL, U.S. DEPUTY SURVEYOR FOR THE GLO, SUBDIVIDED THE TOWNSHIP.

1916 R.S. CHAPMAN (RSC), COUNTY SURVEYOR, RESURVEYED SECTION 25 AS SECTION PLAT #1. HE REESTABLISHED THE NE CORNER OD SEC 25 (SE COR OF SEC 24) AND SET A GRANITE STONE THERE. HIS MAP DEPICTS A DISTANCE OF 5356.8 FROM THE SE CORNER OF SEC 24 TO THE NE CORNER OF SEC 24 COMPARED TO A GOVERNMENT DISTANCE OF 5280 FEET.

IN 1998-1999 MIKE TRUNK (LS#18434) REESTABLISHED THE N 1/4 CORNER OF SEC 24 (DOC #1052). THE STATEMENT OF EVIDENCE ON THIS DOCUMENT REFERENCES AN IP BY KANABEC COUNTY SURVEYOR, DEL RUDE (LS#8195) AT SUBJECT CORNER.

RUM RIVER SURVEYS IN 2004 FOUND RSC's GRANITE STONE AT THE SE CORNER OF SEC 24. THIS CORNER IS CURRENTLY BEING CERTIFIED.

IN NOVEMBER OF 2006, BOGART, PETERSON & ASSOCIATES (BPA) LOCATED THE STONE AT THE SE CORNER OF SEC 24 AND AN IRON PIPE AT THE NE CORNER OF SEC 24 (UNCERTIFIED). THE DISTANCE BETWEEN THESE TWO MONUMENTS MEASURED 5356.93 WHICH COMPARES VERY CLOSELY WITH RSC's DISTANCE. THE FOUND IP WAS ACCEPTED AS THE BEST PERPETUATION OF THE SUBJECT CORNER. REFERENCE TIES WERE TAKEN AT THIS TIME.

IN 2007 BPA SET AN IRON PIPE CAPPED WITH AN ALUMINUM CAP STAMPED "MILLE LACS COUNTY LAND MARKER" AT THE LOCATION OF THE FOUND 1/2" OPEN.

ON AUGUST 9, 2006, E.G. RUD AND SONS FOUND THIS IRON PIPE AND ESTABLISHED KANABEC COUNTY COORDINATES ON THIS LOCATION USING G.P.S. EQUIPMENT.