

CERTIFICATE OF LOCATION OF GOVERNMENT CORNER

WEST QUARTER Corner of Section 18, Township 38, Range 25, 4TH P.M.

STATE OF MINNESOTA, County of KANABEC

At the corner location shown on the sketch:

FOUND MONUMENT
AND ESTABLISHED G.P.S. COORDINATES ON ITS LOCATION.

Kanabec County U.S. Survey Feet Coordinates
NAD 1983, HARN 1996 Adjustment
Obtained by RTK GPS Observation

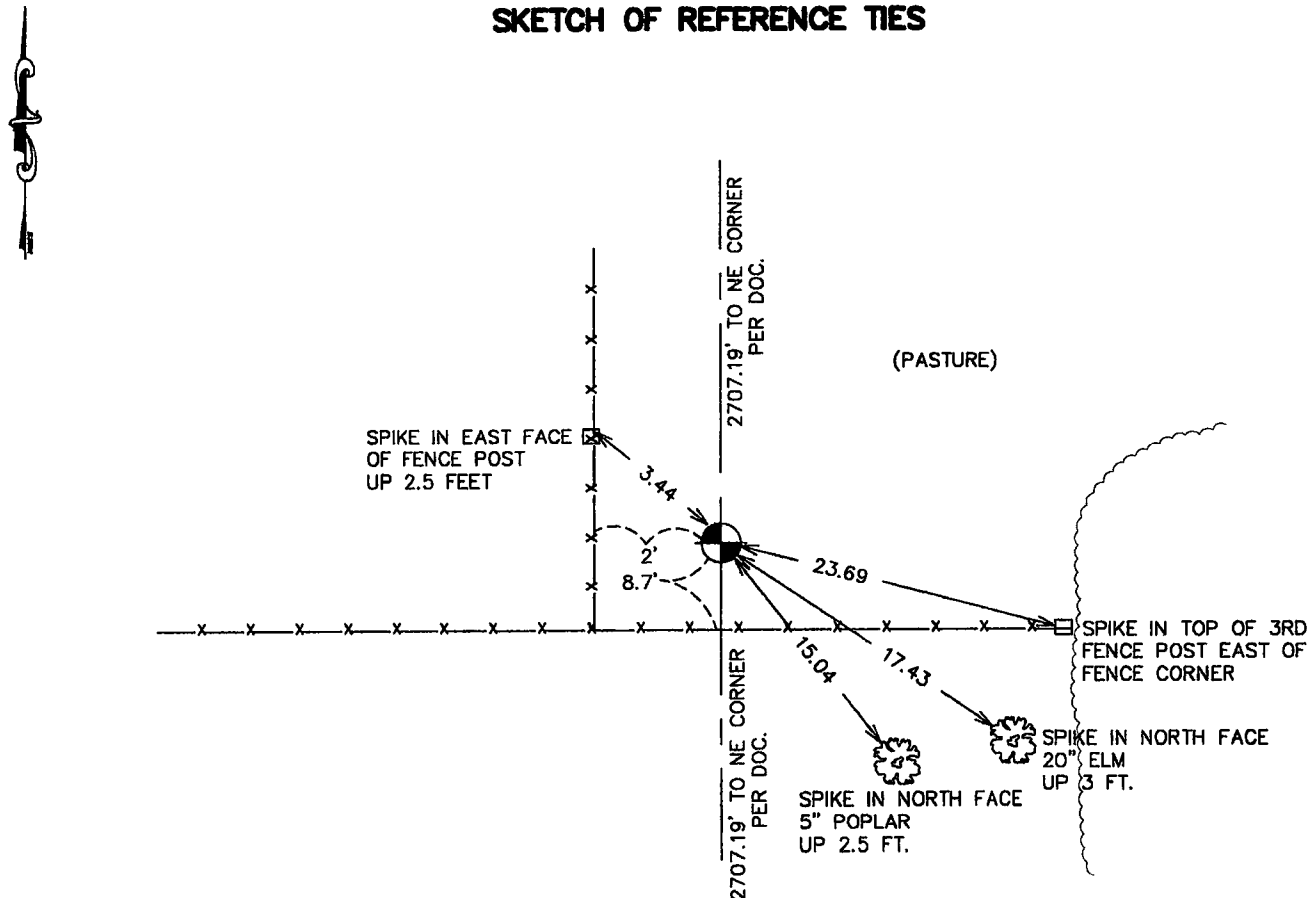
Northing= 120934.95

Easting= 343011.60

Note: NAD 1983, HARN 1996 Adjustment
coordinates are NOT compatible with
NAD 1983 coordinates

Note: 1 Meter=3937/1200 U.S. Survey Feet

SKETCH OF REFERENCE TIES



Statement of evidence relative to this corner location is on back of page.

I hereby certify that this document and the data contained herein was prepared by me or under my direct supervision.

Ernest J. Rud
Signature

9-11-2006
Date

Registration No. Minn No 9808

Land Surveyor, Professional Engineer

County Surveyor, County Engineer

OFFICE OF THE COUNTY RECORDER

County of Kanabec

I hereby certify that this document was filed in the County Recorder's office at 8:00 A M. on the

13th day of Sept A.D., 2006

County Recorder Randa Olson

BY _____ Deputy

DOCUMENT NO. _____

WEST QUARTER CORNER SECTION 18, T38, R25

STATEMENT OF EVIDENCE

THE SUBJECT CORNER WAS FIRST ESTABLISHED DURING THE ORIGINAL GOVERNMENT SURVEY OF THE TOWNSHIP LINES BY DANIEL HIGBEE IN 1849. A STAKE WAS PLACED AT THE SUBJECT CORNER. NO REMNANTS OF HIGBEE'S CORNER OR BEARING TREES WERE FOUND.

NO SUBSEQUENT SURVEYS OF SECTION 13 COULD BE LOCATED.

DAVE REGAN PERFORMED A SURVEY IN THE NORTHWEST QUARTER OF SECTION 13 BEGINNING IN THE FALL OF 2001. THE SUBJECT CORNER WAS NEEDED TO PERFORM THE SURVEY AND ALL OF THE SECTION GLO CORNERS BORDERING SECTION 13, WITH THE EXCEPTION OF THE SUBJECT CORNER HAD BEEN RE-ESTABLISHED BY OTHER SURVEYORS OR DAVE REGAN. ALL OCCUPATION LINES NEAR THE SUBJECT CORNER AND WITHIN SECTION 13 WERE LOCATED. AN EXAMINATION OF THE OCCUPATION LINES DID NOT PRODUCE A POSITION FOR THE SUBJECT CORNER THAT COULD BE IN AGREEMENT WITH THE MAJORITY OF THE OCCUPATION LINES AND A DECISION WAS MADE TO PLACE THE SUBJECT CORNER AT A LOST POSITION MIDWAY AND ON LINE BETWEEN THE NORTHEAST AND SOUTHEAST CORNERS OF SECTION 13. THE RESULTING MEASUREMENTS TO THE NORTHEAST SECTION CORNER WAS 2707.19 FEET AND 2707.19 FEET TO THE SOUTHEAST CORNER OF SECTION 13.

IN AUGUST 2006 E.G. RUD AND SONS RAN A SURVEY AROUND SECTION 18 TO TIE IN EXISTING MONUMENTATION AND OCCUPATION LINES. THE CIM WAS FOUND AND ACCEPTED AS THE LOCATION FOR THE WEST QUARTER CORNER OF SECTION 18. KANABEC COUNTY COORDINATES WERE ESTABLISHED ON THIS POSITION USING G.P.S. EQUIPMENT.