

# CERTIFICATE OF LOCATION OF GOVERNMENT CORNER

SOUTHWEST Corner of Section 7, Township 38, Range 25, 4TH P.M.

STATE OF MINNESOTA, County of KANABEC

At the corner location shown on the sketch:  
In July 2005 found a 2 3/4" by 19" cast iron monument

Kanabec County U.S. Survey Feet Coordinates  
NAD 1983, HARN 1996 Adjustment  
Obtained by RTK GPS Observation

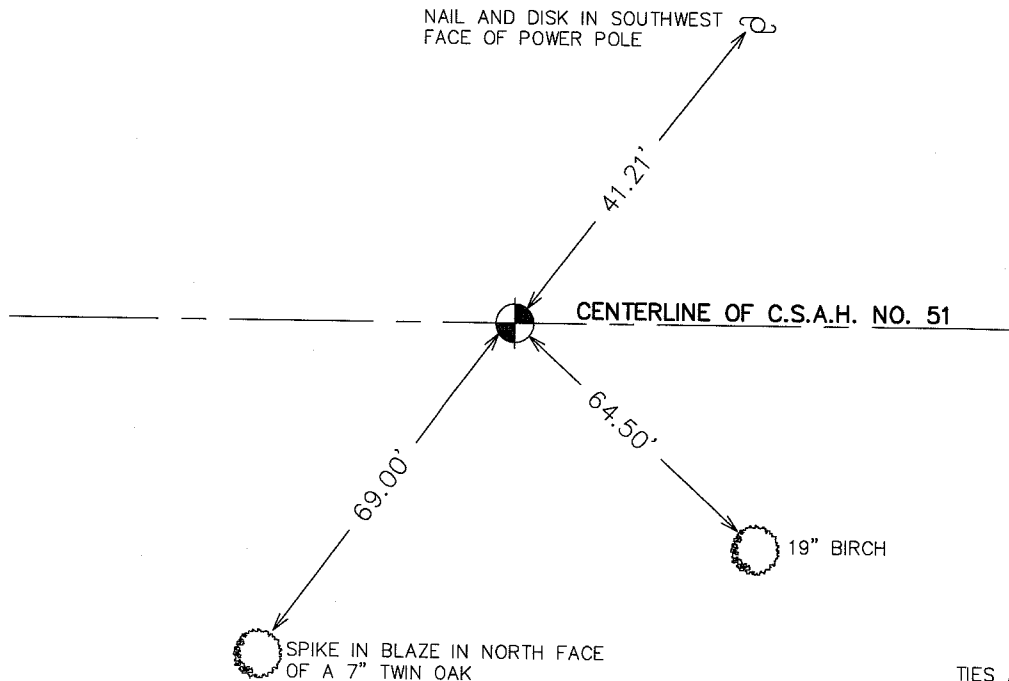
Northing= 123641.26

Easting= 342937.24

Note: NAD 1983, HARN 1996 Adjustment  
coordinates are NOT compatible with  
NAD 1983 coordinates

Note: 1 Meter=3937/1200 U.S. Survey Feet

## SKETCH OF REFERENCE TIES



TIES ARE TO A SPK. IN  
BLAZE IN NEAR FACE

Statement of evidence relative to this corner location is on back of page.

I hereby certify that this document and the data contained herein was prepared by me or under my direct supervision.

Ernest J. Rud  
Signature

9-19-05  
Date

Registration No. 9808

Land Surveyor,       Professional Engineer

County Surveyor,       County Engineer

### OFFICE OF THE COUNTY RECORDER

County of \_\_\_\_\_

I hereby certify that this document was filed in the County Recorder's office at \_\_\_\_\_ M. on the \_\_\_\_\_ day of \_\_\_\_\_ A.D., 20\_\_\_\_

County Recorder \_\_\_\_\_

BY \_\_\_\_\_ Deputy

**DOCUMENT NO.** \_\_\_\_\_

**STATEMENT OF EVIDENCE FROM TIE SHEET 556**

ALL OF THE ORIGINAL BEARING TREES ARE NOW GONE.

THE DEPARTMENT OF TRANSPORTATION'S RIGHT OF WAY MAP OF HIGHWAY NO. 23 SHOWS A STONE FOR THIS CORNER.

M. B. RUDE MADE AN EXCAVATION WITH THE BACKHOE AND FOUND A 1/2" REBAR DOWN 1.3 FEET. M. B. RUDE OFFSET THE REBAR AND CONTINUED DIGGING, BUT FOUND NO ADDITIONAL EVIDENCE.

USING THE ANGLE AND DISTANCE FROM THE CENTER LINE OF HIGHWAY NO. 23, THE STONE SHOULD BE WITHIN A FOOT OF THE REBAR FOUND. THE REBAR FITS THE CENTERLINE OF THE ROAD EAST AND WEST AND AN OLD FENCE NORTH.

IN JULY 2005 WE LOCATED THIS CORNER CHECKED TIE INFORMATION AND TOOK ADDITIONAL TIES IF AVAILABLE AND ESTABLISHED KANABEC COUNTY COORDINATES ON THIS POSITION.