

# CERTIFICATE OF LOCATION OF GOVERNMENT CORNER

W 1/4 Corner of Section 7, Township 38, Range 25, 4TH P.M.

STATE OF MINNESOTA, County of KANABEC

At the corner location shown on the sketch:  
In July 2005 found a 2 3/4" X 19" cast iron monument.

Kanabec County U.S. Survey Feet Coordinates  
NAD 1983, HARN 1996 Adjustment  
Obtained by RTK GPS Observation

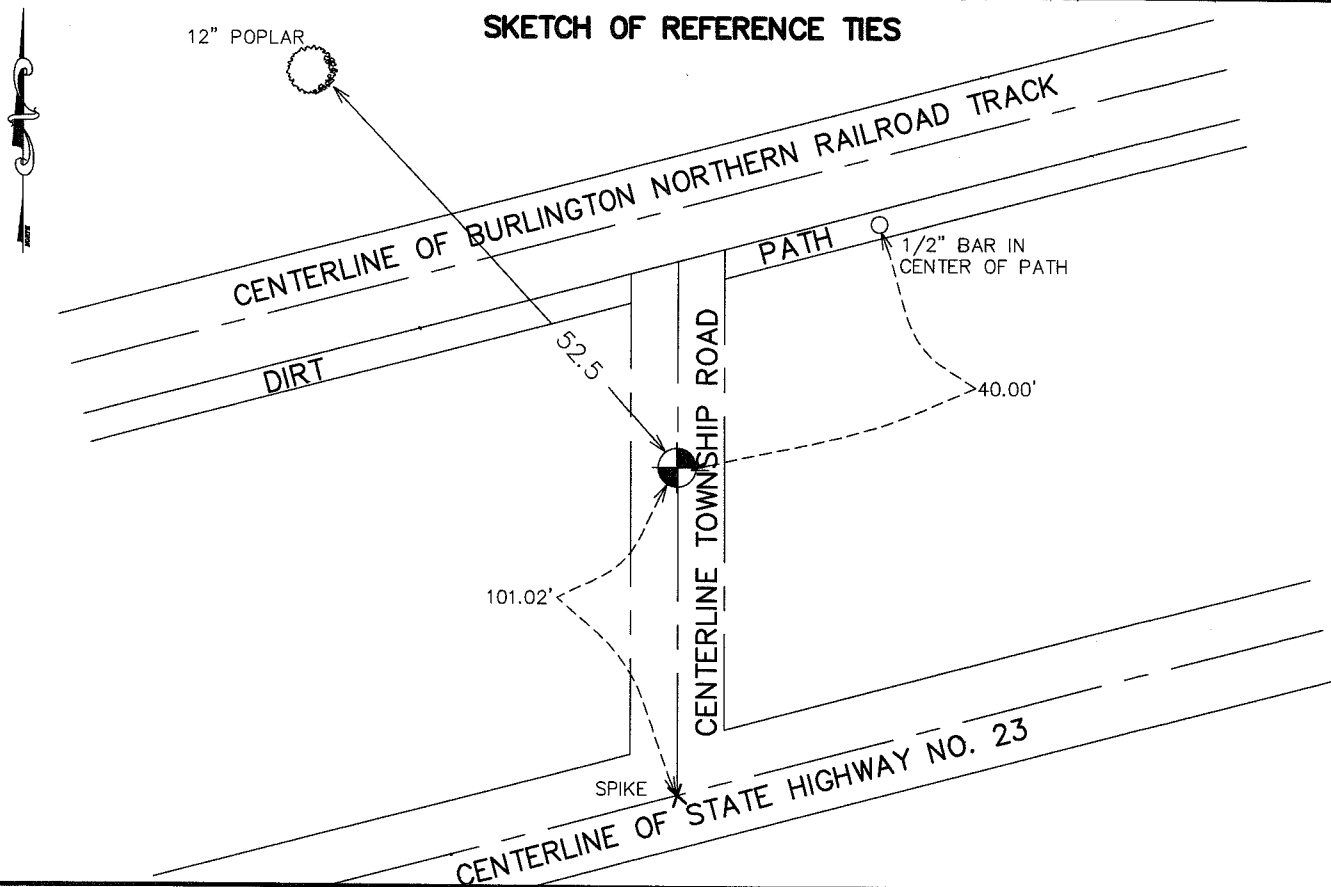
Northing= 126332.64

Easting= 342896.90

Note: NAD 1983, HARN 1996 Adjustment  
coordinates are NOT compatible with  
NAD 1983 coordinates

Note: 1 Meter=3937/1200 U.S. Survey Feet

## SKETCH OF REFERENCE TIES



Statement of evidence relative to this corner location is on back of page.

I hereby certify that this document and the data contained herein was prepared by me or under my direct supervision.

Ernest Blud  
Signature

9-19-05  
Date

### OFFICE OF THE COUNTY RECORDER

County of \_\_\_\_\_

I hereby certify that this document was filed in the County Recorder's office at \_\_\_\_\_ M. on the \_\_\_\_\_ day of \_\_\_\_\_ A.D., 20\_\_\_\_

\_\_\_\_\_ day of \_\_\_\_\_ A.D., 20\_\_\_\_

County Recorder \_\_\_\_\_

BY \_\_\_\_\_ Deputy

DOCUMENT NO. \_\_\_\_\_

Registration No. 9808

Land Surveyor,  Professional Engineer

County Surveyor,  County Engineer

**STATEMENT OF EVIDENCE FROM TIE SHEET 559**

ALL OF THE ORIGINAL BEARING TREES ARE NOW GONE.

THERE IS NO RESURVEY DATA ON FILE FOR THIS CORNER.

THE DEPARTMENT OF TRANSPORTATION'S RIGHT OF WAY MAP FOR HIGHWAY NO 23 SHOWS THIS CORNER IN THE RIGHT OF WAY OF THE RAILROAD AND DID NOT FIND OR SET THIS CORNER. ALL EVIDENCE WAS REMOVED IN THE CONSTRUCTION OF THE RAILROAD.

M. B. RUDE SET THIS CORNER ON A LINE AND SPLIT BETWEEN THE NORTHWEST AND SOUTHWEST CORNERS OF SECTION 7.

2005

IN JULY 2005 WE LOCATED THIS CORNER, CHECKED AND TOOK NEW TIES AND ESTABLISHED KANABEC COUNTY COORDINATES ON THIS POSITION.