

CERTIFICATE OF LOCATION OF GOVERNMENT CORNER

W 1/4 Corner of Section 6, Township 38, Range 25, 4TH P.M.

STATE OF MINNESOTA, County of KANABEC

At the corner location shown on the sketch:
In July 2005 found a 7/8" x 24" capped rebar.

Kanabec County U.S. Survey Feet Coordinates
NAD 1983, HARN 1996 Adjustment
Obtained by RTK GPS Observation

Northing= 131664.25

Easting= 342787.71

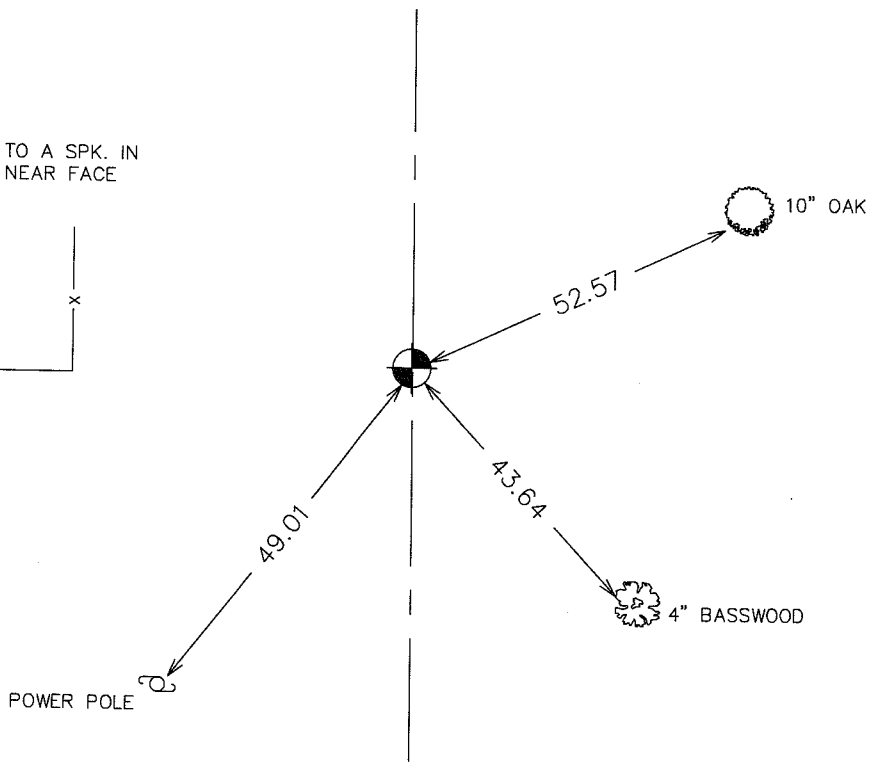
Note: NAD 1983, HARN 1996 Adjustment
coordinates are NOT compatible with
NAD 1983 coordinates

Note: 1 Meter=3937/1200 U.S. Survey Feet

SKETCH OF REFERENCE TIES



TIES ARE TO A SPK. IN
BLAZE IN NEAR FACE



Statement of evidence relative to this corner location is on back of page.

I hereby certify that this document and the data
contained herein was prepared by me or under
my direct supervision.

Ernest [Signature]
Signature

9-19-05
Date

Registration No. 9608

Land Surveyor, Professional Engineer

County Surveyor, County Engineer

OFFICE OF THE COUNTY RECORDER

County of _____

I hereby certify that this document was filed in
the County Recorder's office at _____ M. on the

_____ day of _____ A.D., 20__

County Recorder _____

BY _____ Deputy

DOCUMENT NO. _____

STATEMENT OF EVIDENCE FROM TIE SHEET 918

THERE IS NO RE-SURVEY DATA ON FILE FOR THIS CORNER.

IN JUNE OF 1995, WE MADE A SURVEY AROUND SECTION 6, TOWNSHIP 38, RANGE 25, TO LOCATE EXISTING MONUMENTS, LINES OF OCCUPATION AND ESTABLISH SEARCH AREAS.

M. B. RUDE SET THE CORNER ON LINE BETWEEN THE NORTHWEST AND SOUTHWEST CORNERS OF SECTION 6, TOWNSHIP 38, RANGE 25, AND THE EXTENSION OF THE FENCE LINE WEST.

THIS LOCATION IS 2640.9 FEET NORTH OF THE SOUTHWEST CORNER OF SECTION 6. THE GOVERNMENT LAND OFFICE DISTANCE IS 2640 FEET. THE DISTANCE NORTH TO THE NORTHWEST CORNER OF SECTION 6 IS 2185.15 FEET AND THE GOVERNMENT LAND OFFICE DISTANCE IS 2129.82 FEET. HOWEVER THE GOVERNMENT LAND OFFICE NOTES FOR THIS LINE ARE QUITE CONFUSING. SEE THE REPORT ON FILE FOR THE NORTHWEST CORNER OF SECTION 6 TOWNSHIP38, RANGE 25.

2005

IN JULY 2005 WE LOCATED THIS CORNER CHECKED TIE INFORMATION AND TOOK ADDITIONAL TIES IF AVAILABLE AND ESTABLISHED KANABEC COUNTY COORDINATES ON THIS POSITION.