

# CERTIFICATE OF LOCATION OF GOVERNMENT CORNER

NORTH 1/4 Corner of Section 6, Township 38, Range 25, 4TH P.M.

STATE OF MINNESOTA, County of KANABEC

At the corner location shown on the sketch:  
In July 2005 found a 7/8" X 18" capped rebar.

Kanabec County U.S. Survey Feet Coordinates  
NAD 1983, HARN 1996 Adjustment  
Obtained by RTK GPS Observation

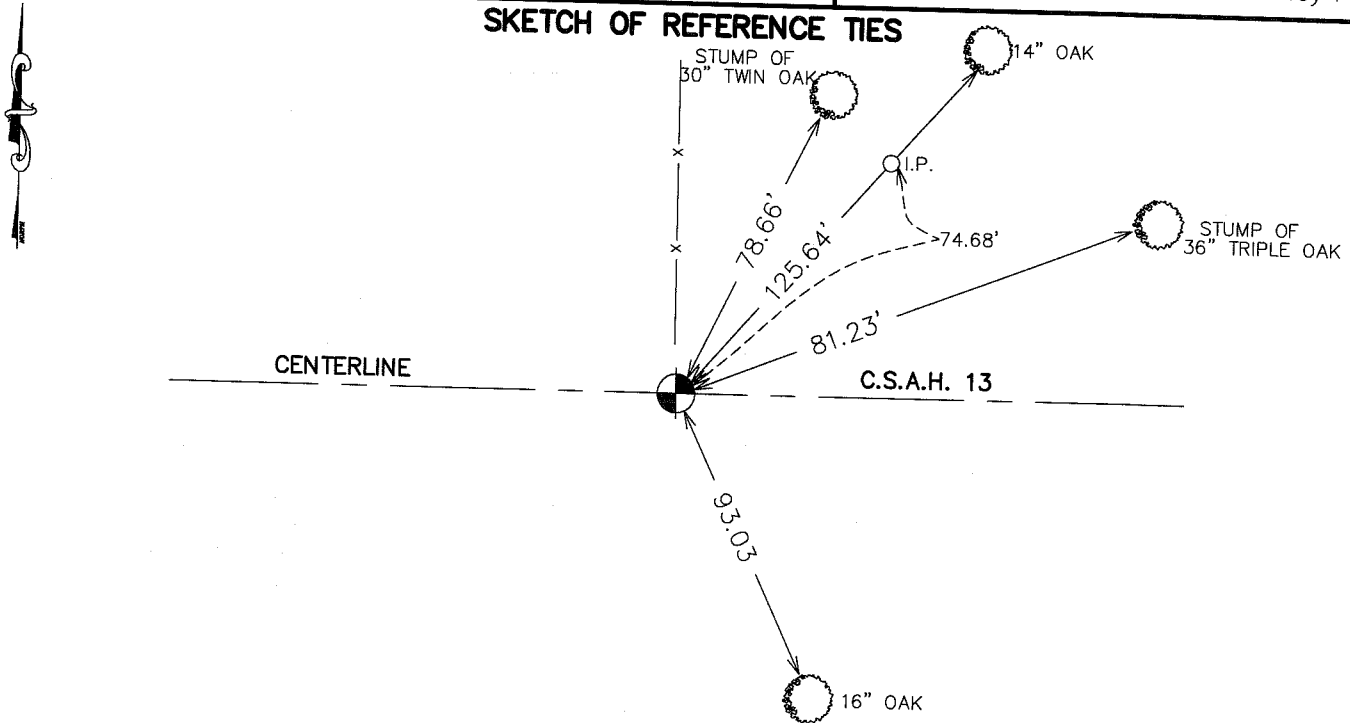
Northing= 133694.71

Easting= 346050.43

Note: NAD 1983, HARN 1996 Adjustment  
coordinates are NOT compatible with  
NAD 1983 coordinates

Note: 1 Meter=3937/1200 U.S. Survey Feet

## SKETCH OF REFERENCE TIES



TIES ARE TO A SPK. IN  
BLAZE IN NEAR FACE

Statement of evidence relative to this corner location is on back of page.

I hereby certify that this document and the data  
contained herein was prepared by me or under  
my direct supervision.

*Ernest J. Reed*  
Signature

9-19-05  
Date

Registration No. 9808

Land Surveyor,  Professional Engineer

County Surveyor,  County Engineer

## OFFICE OF THE COUNTY RECORDER

County of \_\_\_\_\_

I hereby certify that this document was filed in  
the County Recorder's office at \_\_\_\_\_ M. on the

\_\_\_\_\_ day of \_\_\_\_\_ A.D., 20\_\_

County Recorder \_\_\_\_\_

BY \_\_\_\_\_ Deputy

DOCUMENT NO. \_\_\_\_\_

**STATEMENT OF EVIDENCE FROM TIE SHEET 908A**

ALL OF THE ORIGINAL GOVERNMENT BEARING TREES ARE NOW GONE.

IN 1901, A SURVEY WAS MADE AROUND SECTION 31, TOWNSHIP 39, RANGE 25, BY JOHN NELSON THE COUNTY SURVEYOR, FILED IN BOOK A OF SURVEYS, PAGE 294 AND SET THIS CORNER ON LINE AND PROPORTIONAL MEASUREMENT.

IN SEPTEMBER OF 1994, WE MADE A SURVEY ALONG THE NORTH LINE OF SECTION 6, TOWNSHIP 39, RANGE 25, TO LOCATE EXISTING MONUMENTS, LINES OF OCCUPATION AND ESTABLISHED SEARCH AREAS. THIS CORNER FALLS ON AN EAST-WEST ROAD AND A FENCE LINE NORTH-SOUTH.

ON OCTOBER 5, 1994, WE MADE A 3' BY 15' BY 15' EXCAVATION WITH A BACKHOE, BUT NO EVIDENCE OF THE CORNER WAS FOUND IN THE EXCAVATION.

THE INTERSECTION OF THE CENTER LINE OF THE EAST-WEST ROAD AND FENCE LINE NORTH-SOUTH IS IN HARMONY WITH THE SURVEY BY JOHN NELSON IN 1901 AND WAS ACCEPTED AS THE PERPETUATED LOCATION OF THIS CORNER FROM 1901.

THIS CORNER WAS REMOVED DURING ROADWAY CONSTRUCTION IN 1997. THE COUNTY HWY. SURVEY CREW LOCATED THE QUARTER CORNER PRIOR TO CONSTRUCTION AND PLACED ADDITIONAL REFERENCES OUTSIDE OF THE NEW CONSTRUCTION LIMITS.

BEFORE THE ROADWAY WAS PAVED IN 1998, THE CORNER WAS RE-ESTABLISHED ACCORDING TO REFERENCES OBTAINED PREVIOUSLY.

IN JULY 2005 WE LOCATED THIS CORNER CHECKED TIE INFORMATION AND TOOK ADDITIONAL TIES IF AVAILABLE AND ESTABLISHED KANABEC COUNTY COORDINATES ON THIS POSITION.