

CERTIFICATE OF LOCATION OF GOVERNMENT CORNER

North QUARTER Corner of Section 4, Township 38, Range 25, 4TH P.M.
~~SOUTH~~ ~~33~~ ~~30~~

STATE OF MINNESOTA, County of KANABEC

At the corner location shown on the sketch:

SET THIS MONUMENT
AND ESTABLISHED KANABEC COUNTY COORDINATES ON ITS LOCATION.

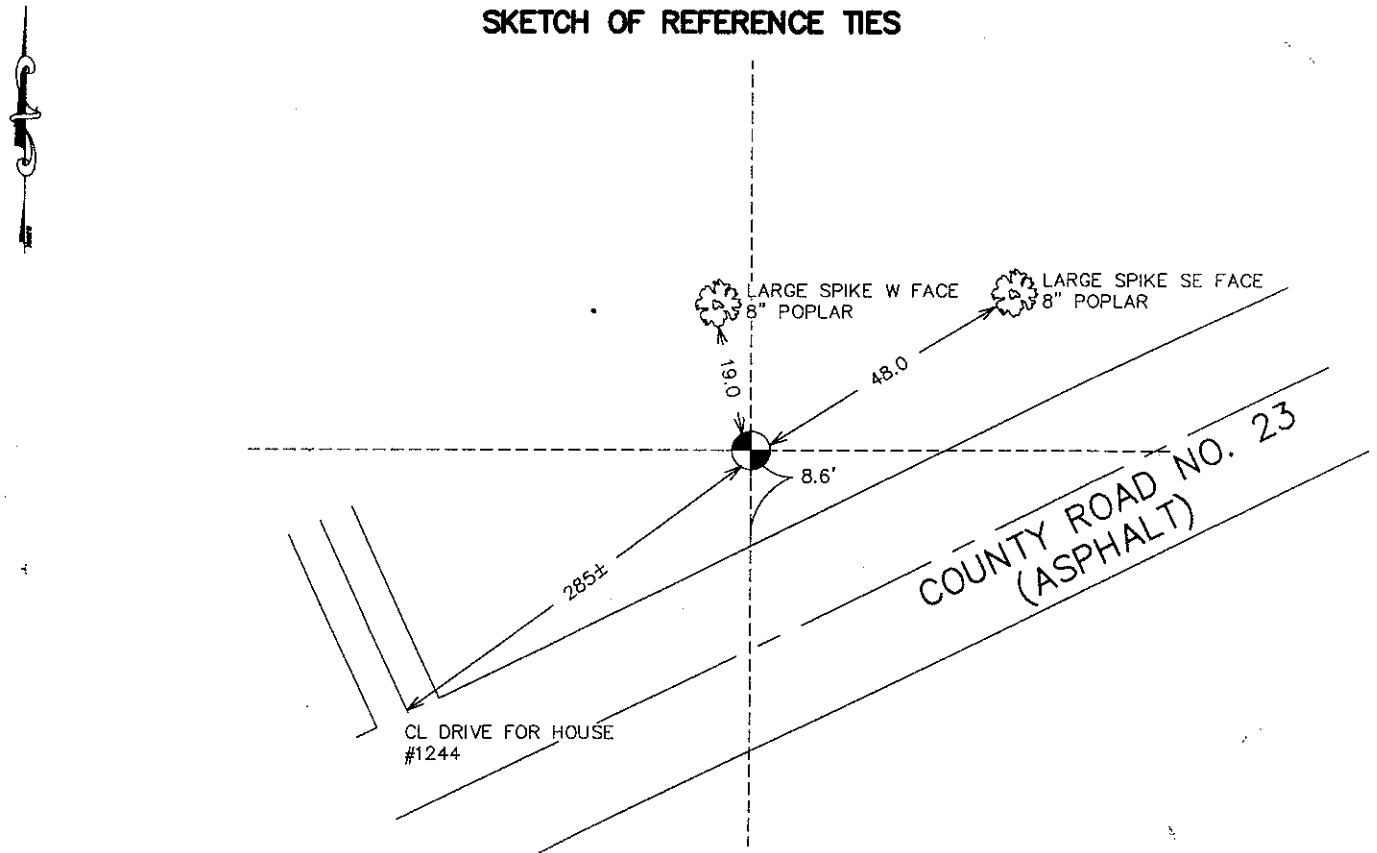
Kanabec County U.S. Survey Feet Coordinates
NAD 1983, HARN 1996 Adjustment
Obtained by RTK GPS Observation

Northing= 133143.9193
Easting= 356724.7097

Note: NAD 1983, HARN 1996 Adjustment
coordinates are NOT compatible with
NAD 1983 coordinates

Note: 1 Meter=3937/1200 U.S. Survey Feet

SKETCH OF REFERENCE TIES



Statement of evidence relative to this corner location is on back of page.

I hereby certify that this document and the data contained herein was prepared by me or under my direct supervision.

Ernest L. Reed 10-05-2007
Signature Date

Registration No. Minn No 9808

- Land Surveyor, Professional Engineer
- County Surveyor, County Engineer

OFFICE OF THE COUNTY RECORDER

County of _____

I hereby certify that this document was filed in the County Recorder's office at _____ M. on the _____ day of _____ A.D., 20____

County Recorder _____

BY _____ Deputy

BY _____ Deputy

DOCUMENT NO. _____

NORTH QUARTER CORNER SECTION 4, T38, R25

STATEMENT OF EVIDENCE

THE ORIGINAL GOVERNMENT CORNER WAS SET BY DEPUTY SURVEYOR DANIEL HIGBEE ON NOVEMBER 21, 1851 AND TWO BEARING TREES ESTABLISHED. NO VISIBLE EVIDENCE REMAINS FOR THE CORNER OR BEARING TREES.

IN BOOK A, OF SURVEYS PAGE 290 JOHN NELSON RECORDED A SURVEY OF SECTION 33 T. 39 R. 25 DONE ON APRIL 2ND, 1901. JOHN NELSON DID NOT FIND THE ORIGINAL CORNER SO HE SET A POST AT MIDPOINT BETWEEN THE SOUTHEAST AND SOUTHWEST CORNER OF SECTION 33 AND TOOK 2 TIES TO THE POST. HIGHWAY 23 RUNS JUST SOUTH OF THIS CORNER AND WHEN IT WAS CONSTRUCTED ALL EVIDENCE TO THE CORNER WAS DESTROYED. NO LOCATION IS SHOWN ON THE RIGHT OF WAY MAP FOR HIGHWAY 23.

JOHN NELSON RECORDED A DISTANCE OF 80.70 CHAINS (5326.2 FEET) ALONG THE SOUTH LINE OF SECTION 33 AND TODAY WE MEASURE 5307.55 FEET.

IN JANUARY 2003 WE SET A 1/2" IRON PIPE ON THE NORTH SHOULDER OF STATE HIGHWAY NO. 23, ON LINE AND MIDWAY BETWEEN THE SOUTHEAST AND SOUTHWEST CORNER OF SECTION 33. REFERENCE TIES WERE TAKEN AND KANABEC COUNTY COORDINATES ESTABLISHED ON THIS POSITION.