

# CERTIFICATE OF LOCATION OF GOVERNMENT CORNER

NORTH QUARTER Corner of Section 2, Township 38, Range 25, 4TH P.M.

STATE OF MINNESOTA, County of KANABEC

At the corner location shown on the sketch:

FOUND THIS MONUMENT  
AND ESTABLISHED G.P.S. COORDINATES ON ITS LOCATION.

Kanabec County U.S. Survey Feet Coordinates  
NAD 1983, HARN 1996 Adjustment  
Obtained by RTK GPS Observation

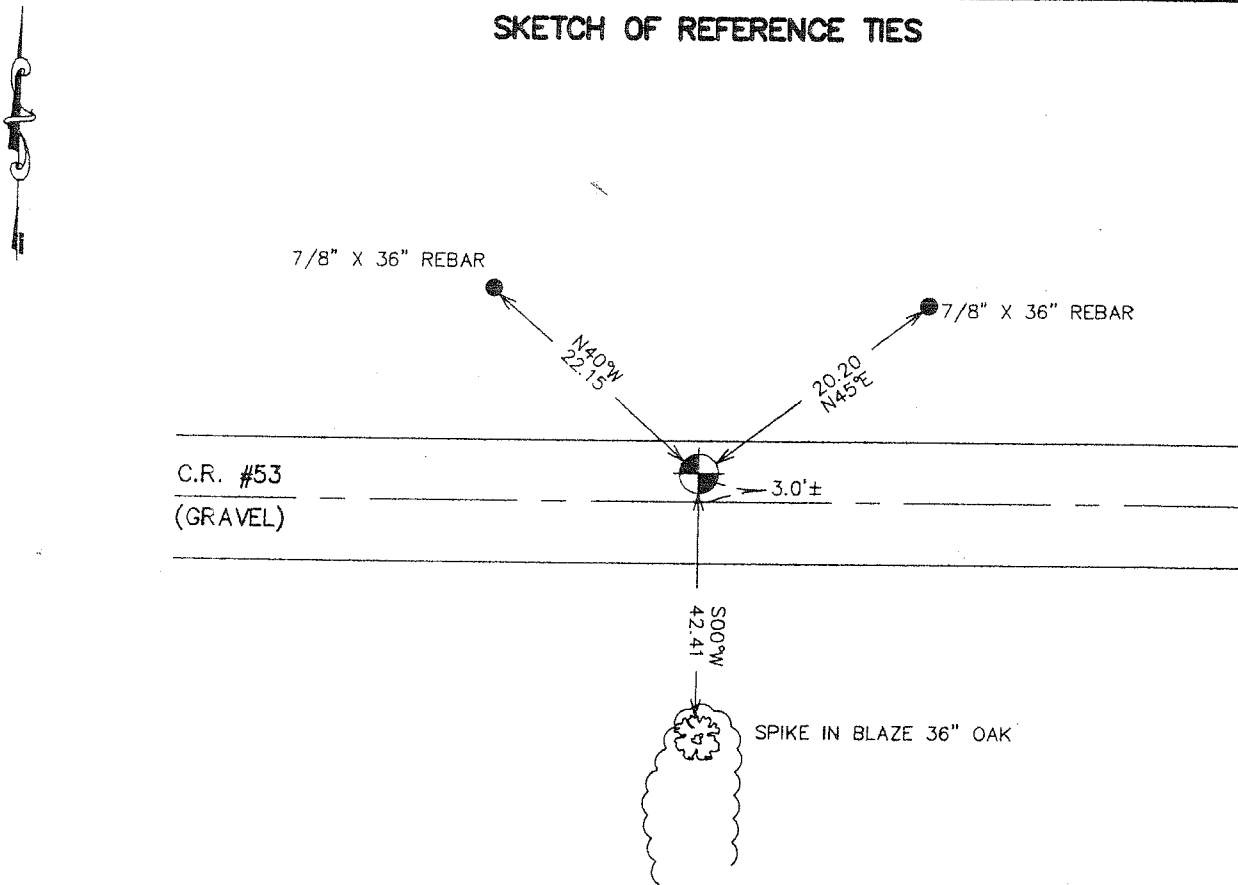
Northing= 132548.76

Easting= 367356.51

Note: NAD 1983, HARN 1996 Adjustment  
coordinates are NOT compatible with  
NAD 1983 coordinates

Note: 1 Meter=3937/1200 U.S. Survey Feet

## SKETCH OF REFERENCE TIES



Statement of evidence relative to this corner location is on back of page.

I hereby certify that this document and the data contained herein was prepared by me or under my direct supervision.

*Ernest J. Blund*  
Signature

1-24-2007  
Date

Registration No. Minn No 9808

- Land Surveyor,     Professional Engineer  
 County Surveyor,     County Engineer

### OFFICE OF THE COUNTY RECORDER

County of \_\_\_\_\_

I hereby certify that this document was filed in the County Recorder's office at \_\_\_\_\_ M. on the \_\_\_\_\_ day of \_\_\_\_\_ A.D., 20\_\_\_\_

County Recorder \_\_\_\_\_

BY \_\_\_\_\_ Deputy

DOCUMENT NO. \_\_\_\_\_

# NORTH QUARTER CORNER SECTIONS 2, T38, R25

## STATEMENT OF EVIDENCE

THE ORIGINAL PUBLIC LAND SURVEY WAS RUN BY MR. D. HIGBEE, DEPUTY SURVEYOR, AND A WOOD POST WAS SET TO MARK THE CORNER. BEARING TIES WERE MADE TO A WHITE OAK AND A MAPLE. ALL OF THE ORIGINAL BEARING TREES ARE NOW GONE.

IN 1900, THOMAS B. VICKERY, A SURVEYOR, MADE A SURVEY IN THE SOUTHEAST QUARTER OF SECTION 35, TOWNSHIP 39, RANGE 25, BUT DOES NOT STATE WHAT WAS FOUND OR SET.

IN 1901, JOHN NELSON, FORMER COUNTY SURVEYOR, MADE A SURVEY ALONG THE NORTH LINE OF SECTION 2, BUT HE DOES NOT MENTION THIS QUARTER CORNER.

IN 1902, FORMER COUNTY SURVEYOR, JOHN NELSON MADE A SURVEY FOR ERNEST STEFENS IN SECTION 2, TOWNSHIP 38, RANGE 25, RECORDED IN COUNTY SURVEYOR'S RECORD BOOK 2 PAGE 8. IN THE SURVEY, MR. NELSON STARTS AT THE NORTH QUARTER CORNER AND GOES SOUTH. NO MENTION WAS MADE OF WHAT WAS FOUND FOR THE CORNER.

IN 1934, THE MINNESOTA DEPARTMENT OF TRANSPORTATION SHOWS AN ASSUMED CORNER AT ENGINEER'S STATION 352+09.8 AT INTERSECTION OF CENTERLINE OF EAST AND WEST ROAD, AND FENCE LINE NORTH AND SOUTH, IN BOOK NO. 24, PAGE 233, OF ALIGNMENT FOR S.P. 56-110 OGILVIE, MINNESOTA "L-LINES" FROM STATION 327+60 TO STATION 413+10.6.

IN JULY OF 1989, M.B. RUDE, KANABEC COUNTY SURVEYOR, MADE A SURVEY AROUND SECTION 35, TOWNSHIP 39, RANGE 25, TO LOCATE EXISTING MONUMENTS, LINES OF OCCUPATION, AND SEARCH AREAS. THIS CORNER LOCATION FALLS NEAR THE INTERSECTION OF AN EAST-WEST TOWNSHIP ROAD AND TREE LINE TO THE SOUTH.

ON JULY 20, 1989, M.B. RUDE KANABEC COUNTY SURVEYOR, MADE A 15' BY 15' BY 3' DEEP EXCAVATION WITH THE BACKHOE AT A LINE AND PROPORTIONAL DISTANCE LOCATION AND CENTERLINE LOCATION. NO EVIDENCE WAS FOUND IN THE EXCAVATION. M.B. RUDE THEN SET A 7/8" BY 24" CAPPED REBAR ON A PROPORTIONAL SPLIT BETWEEN THE NORTHWEST AND NORTHEAST CORNERS OF THE SECTION. THIS LOCATION FIT A TREE LINE TO THE SOUTH. NEW REFERENCE TIES WERE MADE TO A BOX ELDER, TWO 7/8" BY 36" REBARS, AND THE CENTERLINE OF COUNTY HIGHWAY NO. 53. A NEW CERTIFICATE WAS FILED AT THE KANABEC COUNTY RECORDERS OFFICE.

ON JULY 31, 1989, MR. M.B. RUDE, LAND SURVEYOR LICENSE NO. 8195, SHOWS, ON A CERTIFICATE OF SURVEY FOR THE KANABEC COUNTY HIGHWAY DEPARTMENT, A KANABEC COUNTY LAND CORNER AT THE LOCATION.

IN JANUARY, 2002, THE MINNESOTA DEPARTMENT OF TRANSPORTATION RECOVERED A 7/8" BY 24" CAPPED REBAR DOWN 0.9'. ALSO FOUND REFERENCE TIES AS SHOWN BY M.B. RUDE'S CERTIFICATE. NEW BEARING TIES WERE MADE TO THE EXISTING TIES. THE BOX ELDER TREE IS AN OAK, THE MINNESOTA DEPARTMENT OF TRANSPORTATION ACCEPTS THIS POSITION AS THE CORRECT LOCATION FOR THE CORNER.

FOR DETAILS AND SURVEY ANALYSIS, CONTACT THE MINNESOTA DEPARTMENT OF TRANSPORTATION DISTRICT SURVEYS OFFICE IN BAXTER, MINNESOTA.

IN MAY 2006 E.G. RUD AND SONS ESTABLISHED KANABEC COUNTY COORDINATES ON THIS POSITION USING G.P.S. EQUIPMENT.