

CERTIFICATE OF LOCATION OF GOVERNMENT CORNER

NORTHEAST Corner of Section 2, Township 38, Range 25, 4TH P.M.

STATE OF MINNESOTA, County of KANABEC

At the corner location shown on the sketch:
FOUND THIS MONUMENT
AND ESTABLISHED G.P.S. COORDINATES ON ITS LOCATION.

Kanabec County U.S. Survey Feet Coordinates
NAD 1983, HARN 1996 Adjustment
Obtained by RTK GPS Observation

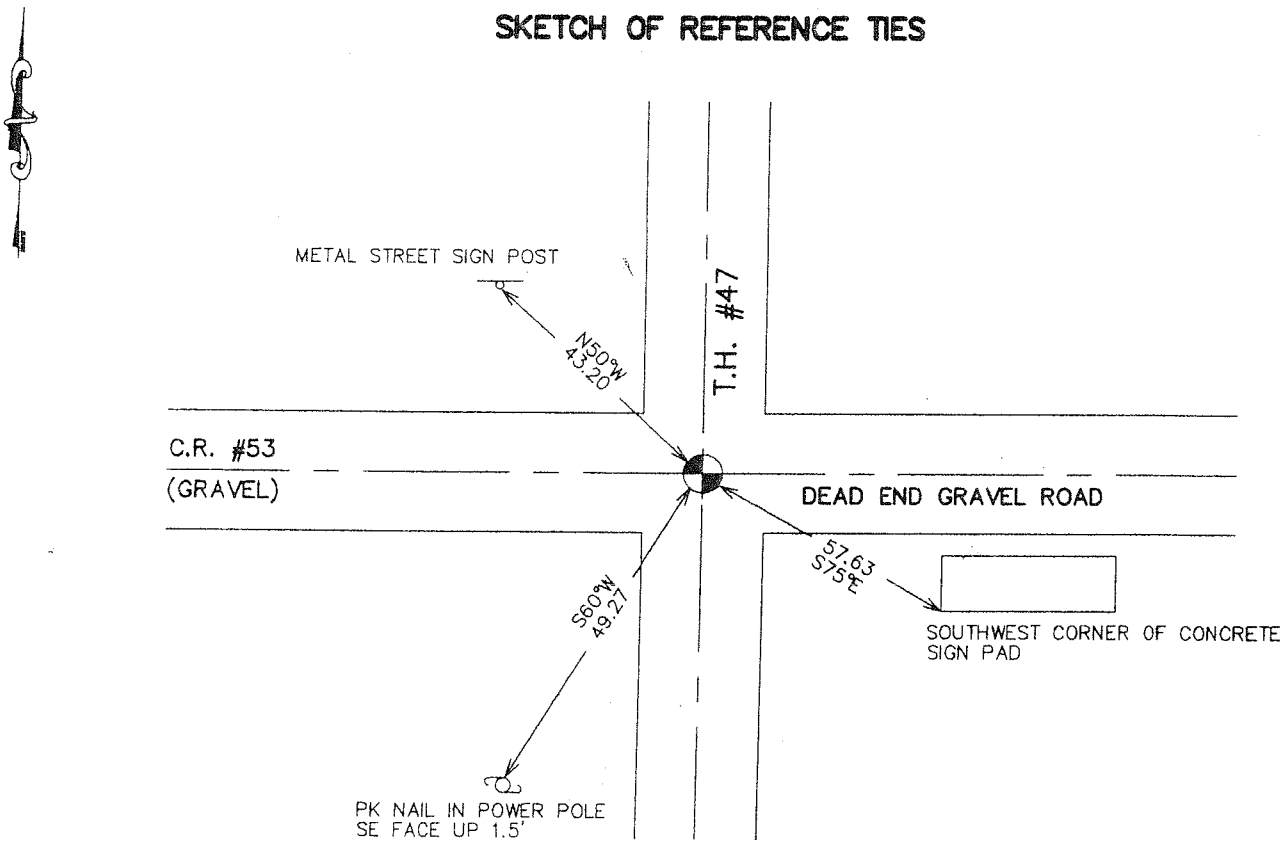
Northing= 132399.25

Easting= 370016.91

Note: NAD 1983, HARN 1996 Adjustment
coordinates are NOT compatible with
NAD 1983 coordinates

Note: 1 Meter=3937/1200 U.S. Survey Feet

SKETCH OF REFERENCE TIES



Statement of evidence relative to this corner location is on back of page.

I hereby certify that this document and the data contained herein was prepared by me or under my direct supervision.

Ernest Hub 1-24-2007
Signature Date

Registration No. *Minn No 9808*

Land Surveyor, Professional Engineer
 County Surveyor, County Engineer

OFFICE OF THE COUNTY RECORDER

County of _____

I hereby certify that this document was filed in the County Recorder's office at _____ M. on the

_____ day of _____ A.D., 20____

County Recorder _____

BY _____ Deputy

DOCUMENT NO. _____

NORTHEAST CORNER SECTIONS 2, T38, R25

STATEMENT OF EVIDENCE

THE ORIGINAL PUBLIC LAND SURVEY WAS RUN BY MR. D. HIGBEE, DEPUTY SURVEYOR, AND A WOOD POST WAS SET TO MARK THE CORNER. BEARING TIES WERE MADE TO FOUR PINE TREES. ALL OF THE ORIGINAL BEARING TREES ARE NOW GONE.

IN 1900, THOMAS VICKERY MADE A SURVEY ALONG THE EAST LINE OF SECTION 35, BUT HE DOES NOT STATE WHAT WAS FOUND OR SET.

IN 1902, FORMER COUNTY SURVEYOR, JOHN NELSON, MADE A SURVEY FOR ERNEST STEFFENS IN SECTION 2, TOWNSHIP 38, RANGE 25, RECORDED IN COUNTY SURVEYOR'S RECORD BOOK 2, PAGE 8. IN THE SURVEY, MR. NELSON STARTS AT THE NORTHEAST CORNER OF THE SECTION. NO MENTION OF WHAT WAS FOUND FOR THE CORNER.

IN 1943 THE MINNESOTA DEPARTMENT OF TRANSPORTATION SHOWS A ASSUMED CORNER AT ENGINEER'S STATION 327+60.0 ON "L-LINE", AT INTERSECTION OF CENTERLINE OF CROSS ROADS, IN BOOK NO. 24, PAGE 231, OF ALIGNMENT FOR S.P. 56-110 OGILVIE, MINNESOTA. "L-LINES" FROM STATION 379+21.4 TO STATION 413+10.6.

STATE HIGHWAY #47 IS PRESENTLY (AUGUST 1989) RUNNING NORTH AND SOUTH AT THIS LOCATION WITH THE INTERSECTION OF A ROAD EAST AND WEST.

ON JULY 5, 1989, MR. M.B. RUDE, LAND SURVEYOR LICENSE NO. 8195, FOUND A SPIKE IN THE INTERSECTION, WHICH WAS REPLACED BY A 1/2" IRON PIPE WITH R.L.S. NO. 10918. NO EXCAVATION WAS MADE AT THAT TIME, BECAUSE STATE DEPARTMENT OF TRANSPORTATION RECORDS SHOWED THERE WAS NO MONUMENTATION AT THIS CORNER IN 1934. THIS LOCATION WAS ACCEPTED AS THE BEST EVIDENCE OF THE ORIGINAL CORNER LOCATION. NEW REFERENCE TIES WERE MADE AND A CERTIFICATE WAS FILED AT THE KANABEC COUNTY RECORDERS OFFICE.

ON JULY 31, 1989, M.B. RUDE, LAND SURVEYOR LICENSE NO. 8195, SHOWS, ON A CERTIFICATE OF SURVEY FOR THE KANABEC COUNTY HIGHWAY DEPARTMENT, A FOUND IRON PIPE OR PIN AT THIS LOCATION.

IN JANUARY 2002, THE MINNESOTA DEPARTMENT OF TRANSPORTATION RECOVERED AN IRON PIPE WITH CAP RLS 10918 DOWN 0.1 FEET. ALSO FOUND REFERENCE TIES AS SHOWN BY M.B. RUDE'S CERTIFICATE. NEW BEARING TIES WERE MADE TO THE EXISTING TIES AND 1 NEW STEEL SIGNPOST. THE MINNESOTA DEPARTMENT OF TRANSPORTATION ACCEPTS THIS POSITION AS THE CORRECT LOCATION FOR THE CORNER.

FOR DETAILS AND SURVEY ANALYSIS, CONTACT THE MINNESOTA DEPARTMENT OF TRANSPORTATION DISTRICT SURVEYS OFFICE IN BAXTER, MINNESOTA.

IN MAY 2006 ESTABLISHED KANABEC COUNTY COORDINATES ON THIS POSITION USING G.P.S. EQUIPMENT.