

CERTIFICATE OF LOCATION OF GOVERNMENT CORNER

NORTH QUARTER Corner of Section 1, Township 38, Range 25, 4TH P.M.

STATE OF MINNESOTA, County of KANABEC

At the corner location shown on the sketch:

FOUND THIS MONUMENT
AND ESTABLISHED KANABEC COUNTY COORDINATES ON ITS LOCATION.

Kanabec County U.S. Survey Feet Coordinates
NAD 1983, HARN 1996 Adjustment
Obtained by RTK GPS Observation

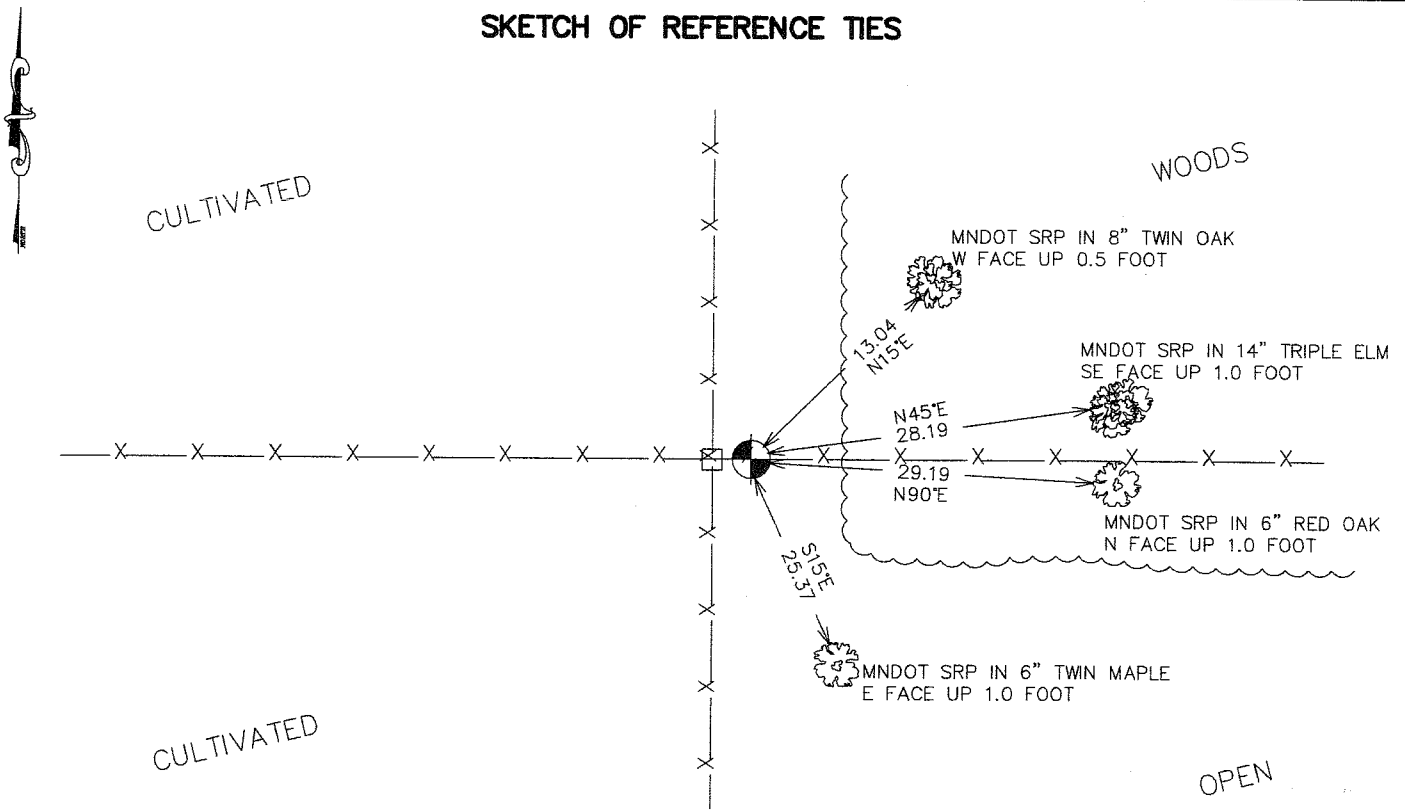
Northing= 132245.310

Easting= 372676.890

Note: NAD 1983, HARN 1996 Adjustment
coordinates are NOT compatible with
NAD 1983 coordinates

Note: 1 Meter=3937/1200 U.S. Survey Feet

SKETCH OF REFERENCE TIES



NOTE: MOUMENT IS 1.3 FEET EAST OF CORNER FENCE POST

Statement of evidence relative to this corner location is on back of page.

I hereby certify that this document and the data contained herein was prepared by me or under my direct supervision.

Ernest Reed 5-25-2007
Signature Date

Registration No. Minn No 9808

Land Surveyor, [] Professional Engineer

[] County Surveyor, [] County Engineer

OFFICE OF THE COUNTY RECORDER

County of _____

I hereby certify that this document was filed in the County Recorder's office at _____ M. on the _____ day of _____ A.D., 20____

County Recorder _____

BY _____ Deputy

DOCUMENT NO. _____

NORTH QUARTER CORNER SECTION 1, T38, R25

STATEMENT OF EVIDENCE

The original public land survey was run in 1851 by Mr. D. Higbee, Deputy Surveyor, and a wood post was used to mark the corner. Bearing ties were made to a linden and a black ash.

In 1901, former County Surveyor, John Nelson, made a Township Road Order survey in Section 36, T. 39 N., R. 25 W., in which he located and established corners. An oak stump and a pine were used as a reference ties, recorded in Road Record Book Number 2, Page 10. No mention was made of what was found or set.

In 1999–2002, The Minnesota Department of Transportation made a survey around Section 36, T. 39, R. 25, and Section 1, T. 38, R. 25, to locate the existing monuments, lines of occupation, and search areas. This corner falls near the intersection of fences north – south, and fences east – west. A field search was done around the fence corner and nothing was found.

In January, 2002, The Minnesota Department of Transportation accepted the fence corner as a perpetuation of the original location of the corner. The Minnesota Department of Transportation set a cast iron cap with a brass center, on a 30–inch long telespar tube, to mark the corner. New bearing ties were made to two oaks, an elm and a maple. The Minnesota Department of Transportation accepts this position as the correct location for the corner.

For details and survey analysis, contact the Minnesota Department of Transportation District Surveys Office in Baxter, Minnesota.

In 2003 E.G. Rud and Sons found this corner and established Kanabec County Coordinates on this position using G.P.S. equipment.