

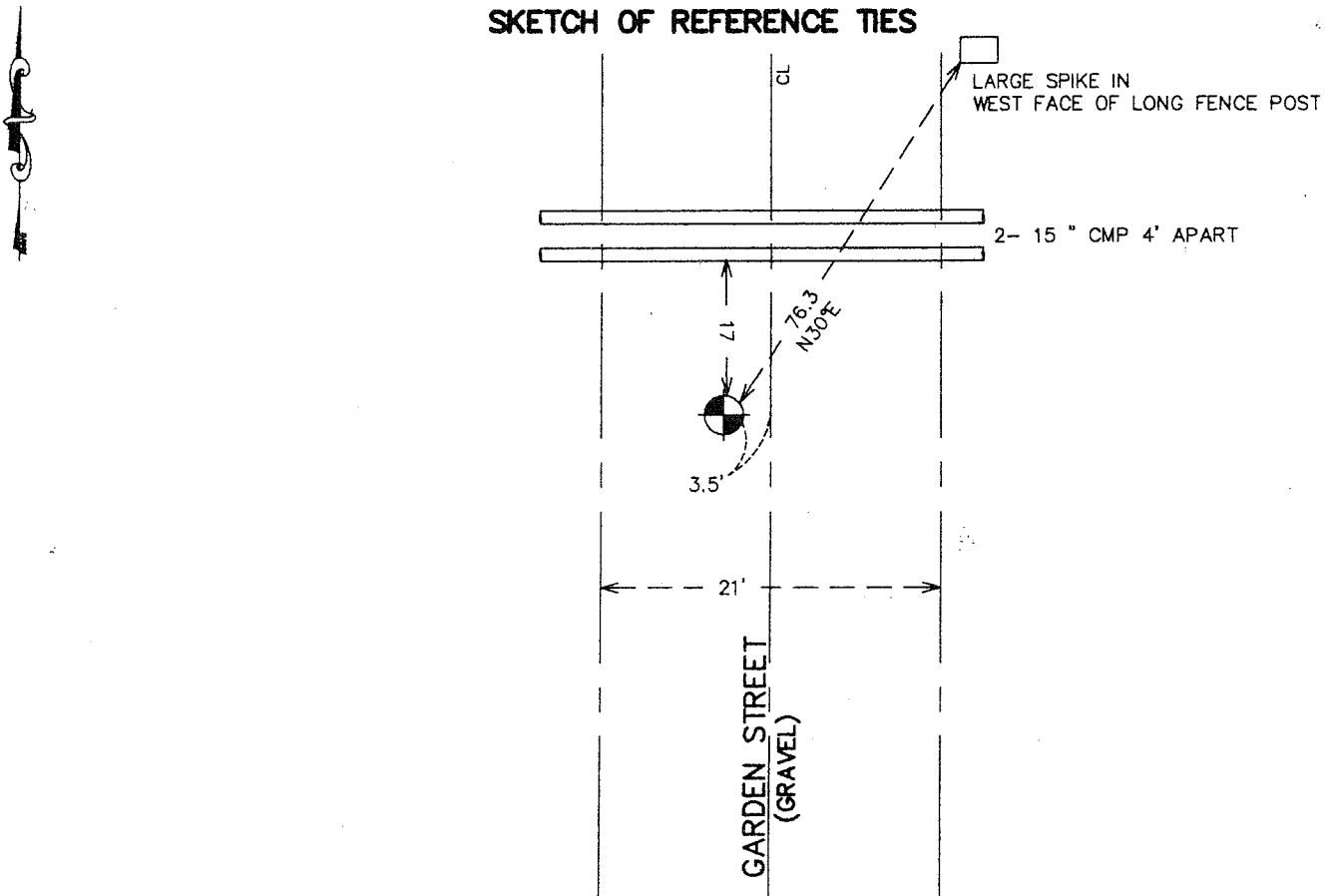
CERTIFICATE OF LOCATION OF GOVERNMENT CORNER

EAST QUARTER Corner of Section 1, Township 38, Range 25, 4TH P.M.
 STATE OF MINNESOTA, County of KANABEC

At the corner location shown on the sketch:
 SET #7 REBAR WITH ALUMINUM CAP
 AND ESTABLISHED G.P.S. COORDINATES ON ITS LOCATION.

Kanabec County U.S. Survey Feet Coordinates
 NAD 1983, HARN 1996 Adjustment
 Obtained by RTK GPS Observation
 Northing= 129568.13
 Easting= 375323.83
 Note: NAD 1983, HARN 1996 Adjustment
 coordinates are NOT compatible with
 NAD 1983 coordinates
 Note: 1 Meter=3937/1200 U.S. Survey Feet

SKETCH OF REFERENCE TIES



Statement of evidence relative to this corner location is on back of page.

I hereby certify that this document and the data contained herein was prepared by me or under my direct supervision.

Ernest J. Rud
 Signature

2-13-2007
 Date

Registration No. Minnesota No 9808

- Land Surveyor, Professional Engineer
 County Surveyor, County Engineer

OFFICE OF THE COUNTY RECORDER

County of _____

I hereby certify that this document was filed in the County Recorder's office at _____ M. on the _____ day of _____ A.D., 20____

County Recorder _____

BY _____ Deputy

DOCUMENT NO. _____

EAST QUARTER CORNER SECTION 1, T38, R25

STATEMENT OF EVIDENCE

THE ORIGINAL PUBLIC LAND SURVEY WAS RUN IN 1849 BY MR. J. SMITH, DEPUTY SURVEYOR, AND A WOOD POST WAS USED TO MARK THE CORNER. BEARING TIES WERE MADE TO A SUGAR MAPLE AND A BIRCH.

IN AN UNDATED SURVEY, FOR THE COUNTY BOARD, T.B. VICKERY, SURVEYOR, MADE A SURVEY ON THE WEST LINES OF SECTION 31 T39, R24 AND SECTIONS 6 AND 7, T.38, R24. HE DOES NOT SAY WHAT WAS FOUND OR SET FOR THE CORNERS.

IN 1999-2002, THE MINNESOTA DEPARTMENT OF TRANSPORTATION MADE A SURVEY AROUND SECTION 1, T38, R25, TO LOCATE THE EXISTING MONUMENTS, LINES OF OCCUPATION, AND SEARCH AREAS. THIS CORNER FALLS ON A TOWNSHIP ROAD (GARDEN STREET).

ON NOVEMBER 16, 1999, THE MINNESOTA DEPARTMENT OF TRANSPORTATION EXCAVATED AN 8 X 10 X 4 FOOT HOLE AT THE INTERSECTION OF THE CENTERLINE OF GARDEN STREET AND THE PROJECTION OF A FENCE LINE WEST. AN 8 X 10 X 4 FOOT HOLE WAS ALSO EXCAVATED ON THE CENTERLINE OF GARDEN STREET AND AT THE ORIGINAL GOVERNMENT SURVEY PROPORTION DISTANCE BETWEEN SECTION CORNERS. NO REMAINING EVIDENCE OF THE CORNER WAS FOUND.

IN JANUARY, 2002, THE MINNESOTA DEPARTMENT OF TRANSPORTATION ESTABLISHED THE EAST QUARTER CORNER OF SECTION 1, T38 R25 BY SINGLE PROPORTION BETWEEN SECTION CORNERS. A MINNESOTA HIGHWAY DEPARTMENT CAST IRON MONUMENT WAS SET TO MARK THE CORNER, AND NEW BEARING TIES WERE MADE TO A BOX ELDER, A FENCE POST, AND TWO 3/4 X 24 INCH IRON PINS. THE MINNESOTA DEPARTMENT OF TRANSPORTATION ACCEPTS THIS POSITION AS THE CORRECT LOCATION FOR THE CORNER.

FOR DETAILS AND SURVEY ANALYSIS, CONTACT THE MINNESOTA DEPARTMENT OF TRANSPORTATION DISTRICT SURVEYS OFFICE N BAXTER, MINNESOTA.

IN JUNE 2005, E.G. RUD AND SONS FOUND THE MINNESOTA HIGHWAY DEPARTMENT MONUMENT AND DISCOVERED IT WAS SET ON LINE AND SPLIT BETWEEN THE NORTHEAST AND SOUTHEAST CORNERS OF SECTION 1 AND NOT ON A PRORATED GOVERNMENT CHAINAGE. THEREFORE A NEW MONUMENT WAS SET IN THE CORRECT LOCATION WHICH WAS APPROXIMATELY 46 FEET NORTH OF THE MINNESOTA HIGHWAY DEPARTMENTS LOCATION. MINNESOTA HIGHWAY DEPARTMENT WAS INFORMED OF THE NEW MONUMENT AND THEIR CREWS VERIFIED OUR LOCATION.