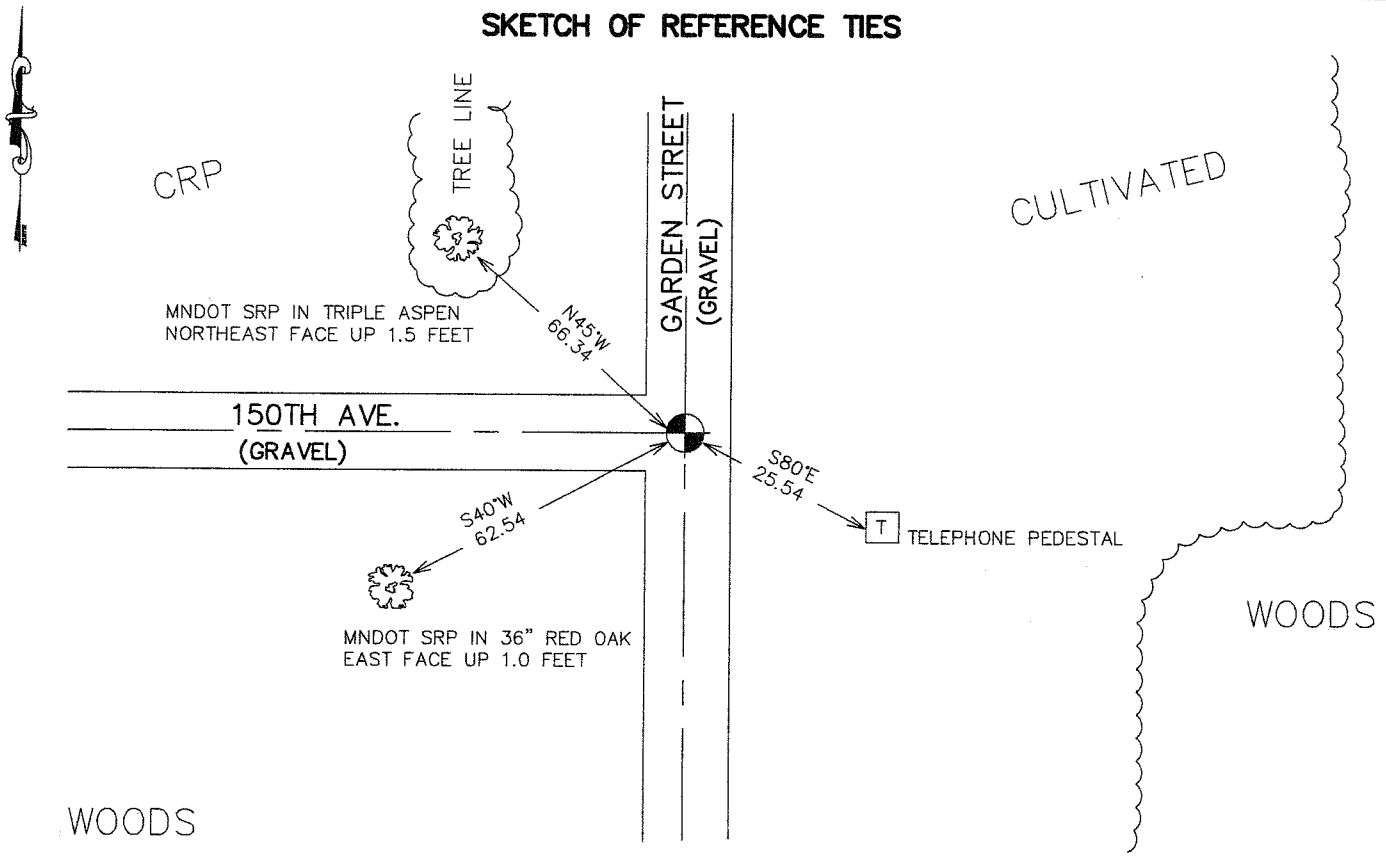


# CERTIFICATE OF LOCATION OF GOVERNMENT CORNER

NORTHEAST Corner of Section 12, Township 38, Range 25, 4TH P.M.  
 STATE OF MINNESOTA, County of KANABEC

At the corner location shown on the sketch:  FOUND THIS MONUMENT AND ESTABLISHED G.P.S. COORDINATES ON ITS LOCATION.	Kanabec County U.S. Survey Feet Coordinates NAD 1983, HARN 1996 Adjustment Obtained by RTK GPS Observation  Northing= <u>126953.07</u> Easting= <u>375313.63</u>  Note: NAD 1983, HARN 1996 Adjustment coordinates are NOT compatible with NAD 1983 coordinates Note: 1 Meter=3937/1200 U.S. Survey Feet
---	--

### SKETCH OF REFERENCE TIES



Statement of evidence relative to this corner location is on back of page.

I hereby certify that this document and the data contained herein was prepared by me or under my direct supervision.

3-19-2007  
 Signature Date

Registration No. Minn No 9808

Land Surveyor,     Professional Engineer  
 County Surveyor,     County Engineer

### OFFICE OF THE COUNTY RECORDER

County of \_\_\_\_\_

I hereby certify that this document was filed in the County Recorder's office at \_\_\_\_\_ M. on the \_\_\_\_\_ day of \_\_\_\_\_ A.D., 20\_\_\_\_

County Recorder \_\_\_\_\_

BY \_\_\_\_\_ Deputy

DOCUMENT NO. \_\_\_\_\_

## NORTHEAST CORNER SECTION 12, T38, R25

### STATEMENT OF EVIDENCE

The original public land survey was run in 1851 by Mr. D. Higbee, Deputy Surveyor, and a wood post was used to mark the corner. Bearing ties were made to two lindens, a sugar maple, and a birch.

In an undated survey for the County Board, in Surveyor's Record Book A, Page 262, T.B. Vickery surveyed the West lines of Section 31, T. 39, R. 24, and Sections 6 and 7, T. 38, R. 24. He does not say what was found or set for the corners.

In 1912, former County Surveyor, John Nelson, made a survey of a road on the South line of Section 1, T. 38, R. 25. Mr. Nelson reestablishes the Southeast Corner of Section 1, T. 38, R. 25. A sandstone was set to mark the corner, and reference ties were made to an oak tree and a pine stump. Recorded in Surveyor's Record Book A, Page 117.

In 1999–2002, The Minnesota Department of Transportation made a survey around Sections 1 and 12, T. 38, R. 25, to locate the existing monuments, lines of occupation, and search areas. This corner falls near the intersection of Township Roads North, South, and West.

On November 16, 1999, The Minnesota Department of Transportation excavated a 6 x 10 x 2 foot deep hole at the centerline of road intersections. A 1-foot x 1-foot x 2-foot sandstone was recovered. The Minnesota Department of Transportation set a cast iron monument on top of the sandstone to mark the corner. New bearing ties were made to an aspen, an oak, and a telephone pedestal. The Minnesota Department of Transportation accepts this position as the correct location for the corner.

For details and survey analysis, contact the Minnesota Department of Transportation District Surveys Office in Baxter, Minnesota.

In Oct. 2005, E.G. Rud and Sons found this monument and established Kanabec County Coordinates using G.P.S. equipment.