

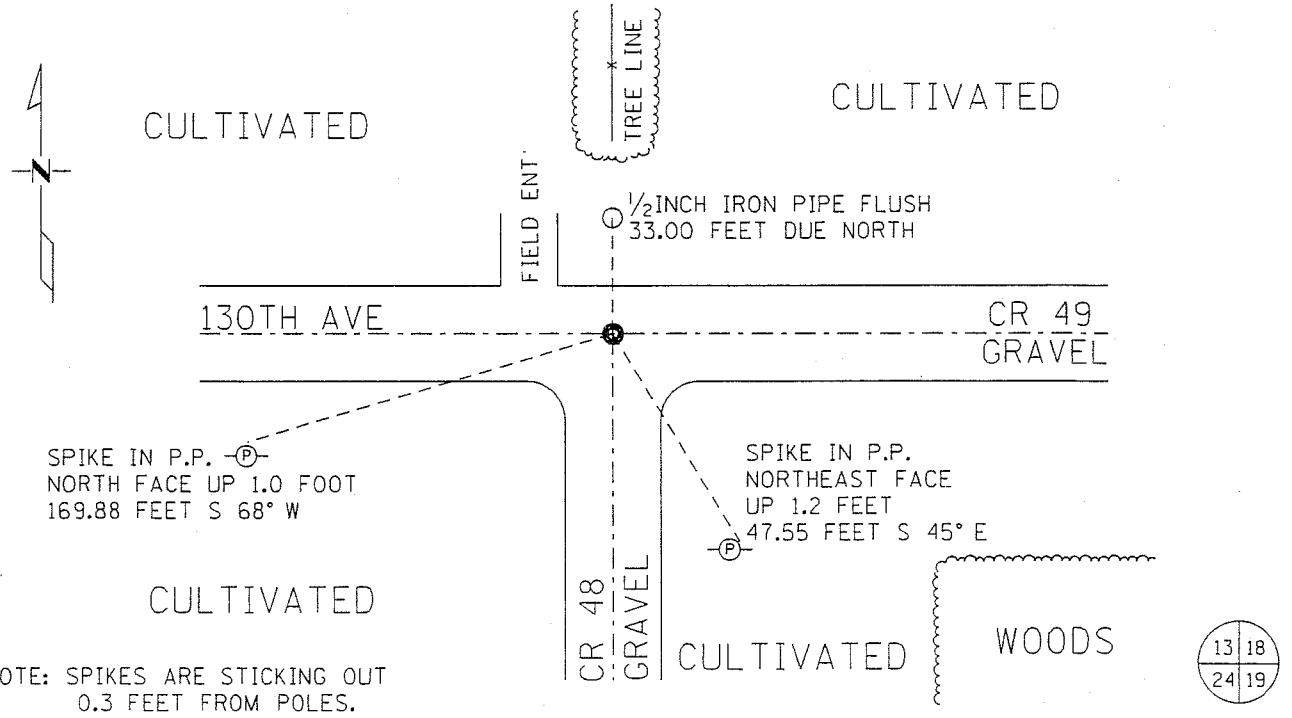
KANABEC COUNTY RECORDER  
Filed 8-28-02 at 12 p. M  
Rhonda A. Olson County Recorder  
By K. Debusch Deputy

# CERTIFICATE OF LOCATION OF GOVERNMENT CORNER

NORTHEAST CORNER of Section 24, Township 38N, Range 25W  
4 TH Principal Meridian, State of Minnesota, County of KANABEC

At the corner location shown on the sketch:

- On 2/15/02 found a CAST IRON MONUMENT DOWN 0.7 FEET  
DATE
- left monument as found     lowered monument     removed monument (explain)
- On \_\_\_\_\_ placed a \_\_\_\_\_  
DATE



NOTE: SPIKES ARE STICKING OUT 0.3 FEET FROM POLES.

Statement of evidence for this corner location is on back of this page.

I hereby certify that this document was researched and prepared by me or under my direct supervision.

Signature [Signature] MNDOT    Date 8-28-2002    License No. 40343  
Title:  Land Surveyor     Professional Engineer     County Surveyor     County Engineer

**Statement of Evidence:** Northeast Corner of Section 24, Township 38 North, Range 25 West, 4<sup>th</sup> Principal Meridian, Kanabec County, Minnesota.

The original public land survey was run in 1849 by Mr. J. Smith, Deputy Surveyor, and a wood post was used to mark the corner. Bearing ties were made to three sugar maples and a linden.

From Statement of Evidence, Document Index Number 568, on July 31, 1980

M.B. Rude, Land Surveyor

All of the original bearing trees are now gone.

John Nelson, the County Surveyor, made a survey from the West Quarter Corner to the Northwest Corner in 1911, but his records don't show what was set or found at the Northwest Corner.

On July 8, 1980, M.B. Rude made an excavation with the backhoe 2 feet down below the road surface and found a cut sandstone with an "X" marked on top. This stone fits the intersection of the county roads.

M.B. Rude removed the stone and replaced it with a 2 ¼" by 19" cast iron monument.

In July, 1980, M.B. Rude made a survey in section 19, T. 38, R. 24. Mr. Rude shows a monument at the Northwest Corner of Section 19. Recorded in Surveyor's Record Book A, Page 224.

On April 19, 1999, The Minnesota Department of Transportation recovered a cast iron monument, down 0.7 feet in the road surface, and three reference ties as described by Mr. Rude's Document, Index Number 568. New bearing ties were established to the existing ties as shown on the front of this sheet. The Minnesota Department of Transportation accepts this position as the correct location for the corner.

For details and survey analysis, contact the Minnesota Department of Transportation District Surveys Office in Baxter, Minnesota.

# CERTIFICATE OF LOCATION OF GOVERNMENT CORNER

NORTHWEST Corner of Section 19, Township 38, Range 24, 4TH P.M.  
 STATE OF MINNESOTA, County of KANABEC

At the corner location shown on the sketch:  
 On 03/ /2002 Found a 2-3/4" BY 19" CAST IRON MONUMENT.

Kanabec County U.S. Survey Feet Coordinates  
 NAD 1983, HARN 1996 Adjustment  
 Obtained by RTK GPS Observation

Northing= 116421.964

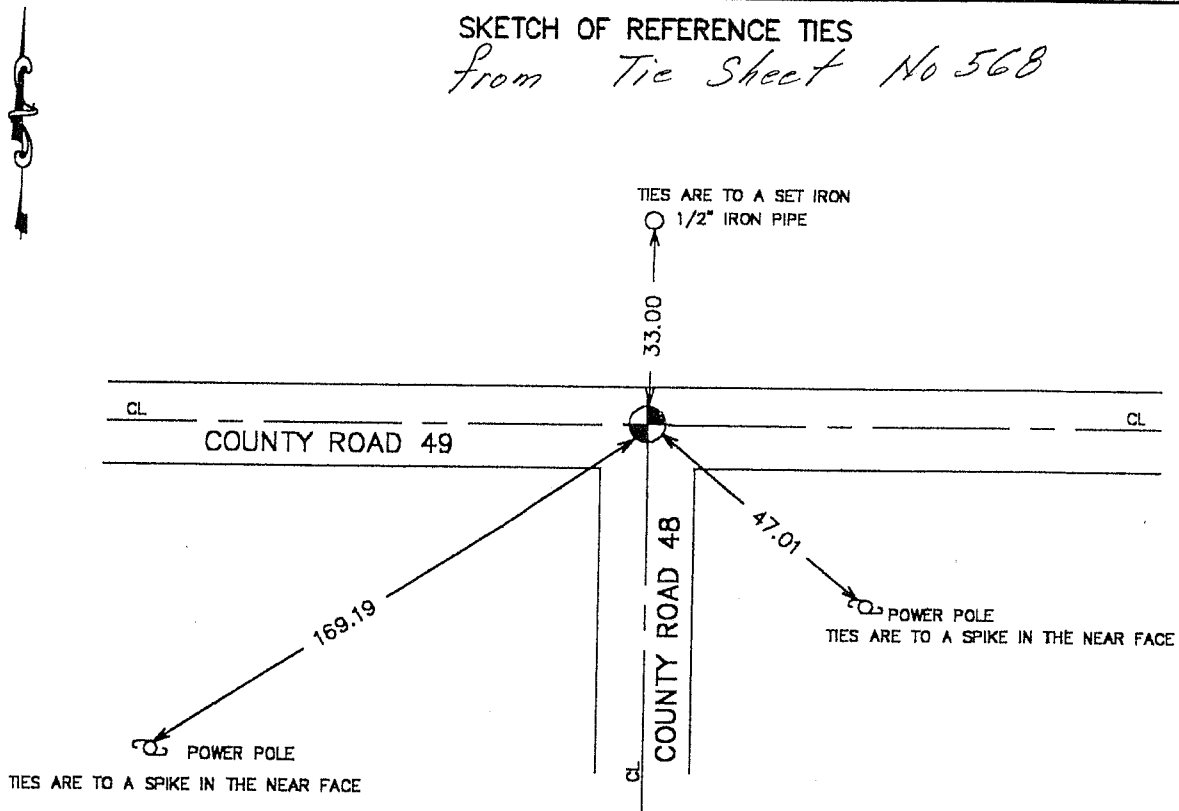
Easting= 375224.658

Note: NAD 1983, HARN 1996 Adjustment  
 coordinates are NOT compatible with  
 NAD 1983 coordinates

Note: 1 Meter=3937/1200 U.S. Survey Feet

## SKETCH OF REFERENCE TIES

*From Tie Sheet No 568*



Statement of evidence relative to this corner location is on back of page.

I hereby certify that this document and the data contained herein was prepared by me or under my direct supervision.

*Eret Lund* 5-08-2003  
 Signature Date

Registration No. 9808

Land Surveyor, [ ] Professional Engineer  
 [ ] County Surveyor, [ ] County Engineer

## OFFICE OF THE COUNTY RECORDER

County of \_\_\_\_\_

I hereby certify that this document was filed in the County Recorder's office at \_\_\_\_\_ M. on the \_\_\_\_\_ day of \_\_\_\_\_ A.D., 20\_\_\_\_

County Recorder \_\_\_\_\_

BY \_\_\_\_\_ Deputy

DOCUMENT NO. \_\_\_\_\_

STATEMENT OF EVIDENCE

SEE TIE SHEET NO. 568