

CERTIFICATE OF LOCATION OF GOVERNMENT CORNER

EAST QUARTER Corner of Section 36, Township 38, Range 25, 4TH P.M.

STATE OF MINNESOTA, County of KANABEC

At the corner location shown on the sketch:

FOUND THIS MONUMENT
AND ESTABLISHED KANABEC COUNTY COORDINATES ON ITS LOCATION.

Kanabec County U.S. Survey Feet Coordinates
NAD 1983, HARN 1996 Adjustment
Obtained by RTK GPS Observation

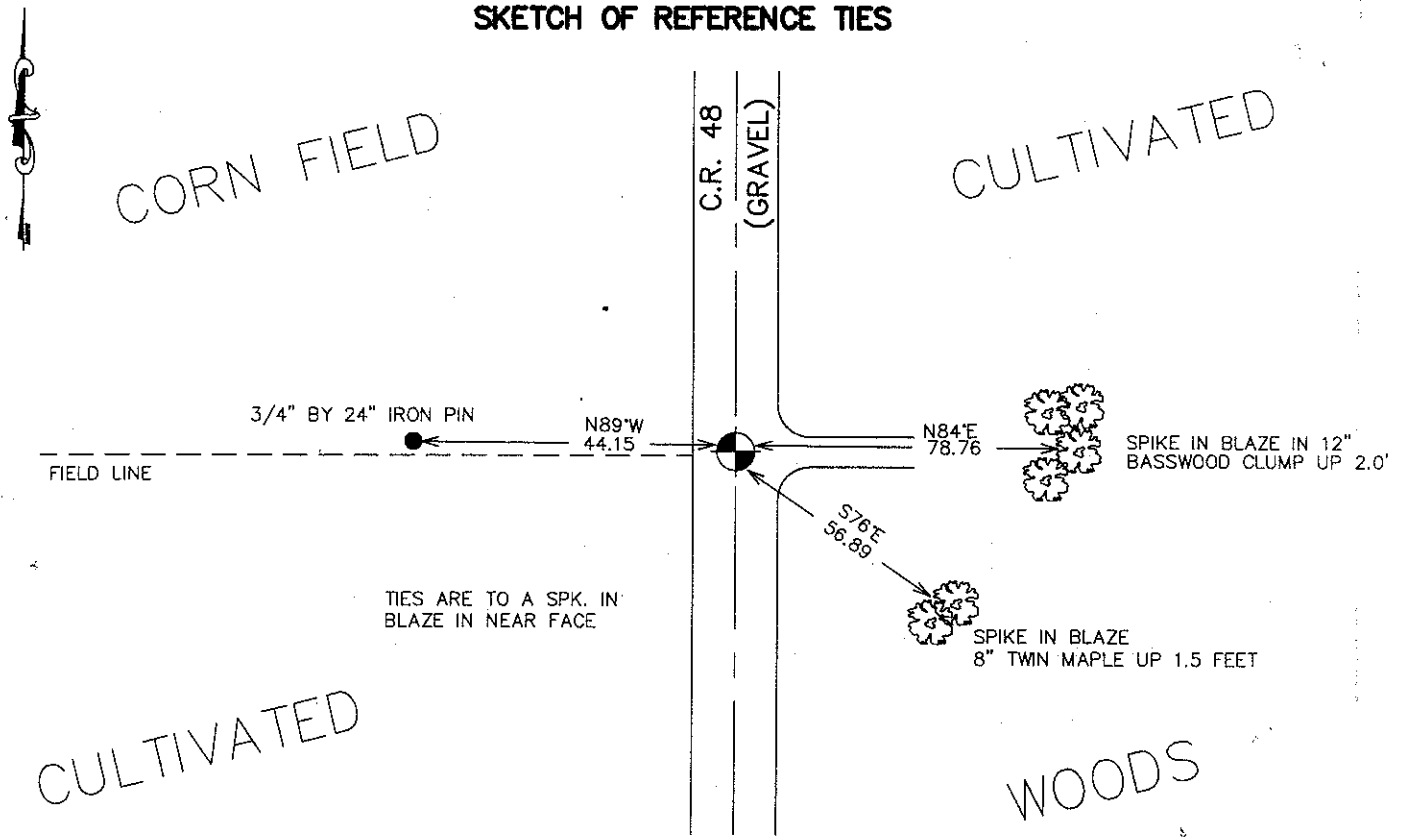
Northing= 103278.56

Easting= 375137.05

Note: NAD 1983, HARN 1996 Adjustment
coordinates are NOT compatible with
NAD 1983 coordinates

Note: 1 Meter=3937/1200 U.S. Survey Feet

SKETCH OF REFERENCE TIES



Statement of evidence relative to this corner location is on back of page.

I hereby certify that this document and the data contained herein was prepared by me or under my direct supervision.

Ernst Rud 10-05-2007
Signature Date

Registration No. 9808

- Land Surveyor, Professional Engineer
 County Surveyor, County Engineer

OFFICE OF THE COUNTY RECORDER

County of _____

I hereby certify that this document was filed in the County Recorder's office at _____ M. on the _____ day of _____ A.D., 20 _____

County Recorder _____

BY _____ Deputy

DOCUMENT NO. _____

In 1904, John Nelson, former County Surveyor, made a survey in Section 31, T. 38 N., R. 24 W., for John Markquet. In the survey, Mr. Nelson states that all the Section Corners were in. He then set 1/4 posts according to the Section Corner distances as to government distances and variations. Mr. Nelson states he set sandstones at certain corners, the map does not show which one's. Recorded in Surveyor's Record Book 2, Page 33.

In 1988, M.B. Rude, Kanabec County Surveyor, in Recorded Certificate Index No. 783, states:

-John Nelson set a stone by single proportional measurement in August of 1893 and took new ties.

-All of the original bearing trees are now gone. John Nelson's ties are also gone.

-On August 15, 1988, I ran a survey around Section 31 to locate existing monuments, lines of occupation and search areas.

- This corner falls on an existing north-south county road and the edge of a field east.

-On August 18, 1988, ~~John Nelson~~ ^{M.B. Rude} made an excavation with the backhoe at this corner. At 1 foot below the surface, ~~John Nelson~~ ^{M.B. Rude} found a sandstone, but the top had been cut off. This was the only stone found in the excavation and is in agreement with John Nelson's distance from the stone monument found in 1985 at the northwest corner of Section 31.

- ~~MBRude~~ ^{MBRude} set a 3-foot by 7/8 inch capped rebar to replace the sandstone.

On April 19, 1999, The Minnesota Department of Transportation recovered a 7/8 inch capped rebar, down 0.15 feet, one foot west of the centerline of a road. Also recovered were two reference ties, as shown on Mr. Rude's Document Index #78. Also at this time, the existing bearing ties were checked, and one new reference tie, to a 3/4 x 24 inch iron pin, was made, as shown on the front of this Certificate. The Minnesota Department of Transportation accepts this position as the correct location for the corner.

In 2006 E.G. Rud and Sons established Kanabec County Coordinates on this corner.