

# CERTIFICATE OF LOCATION OF GOVERNMENT CORNER

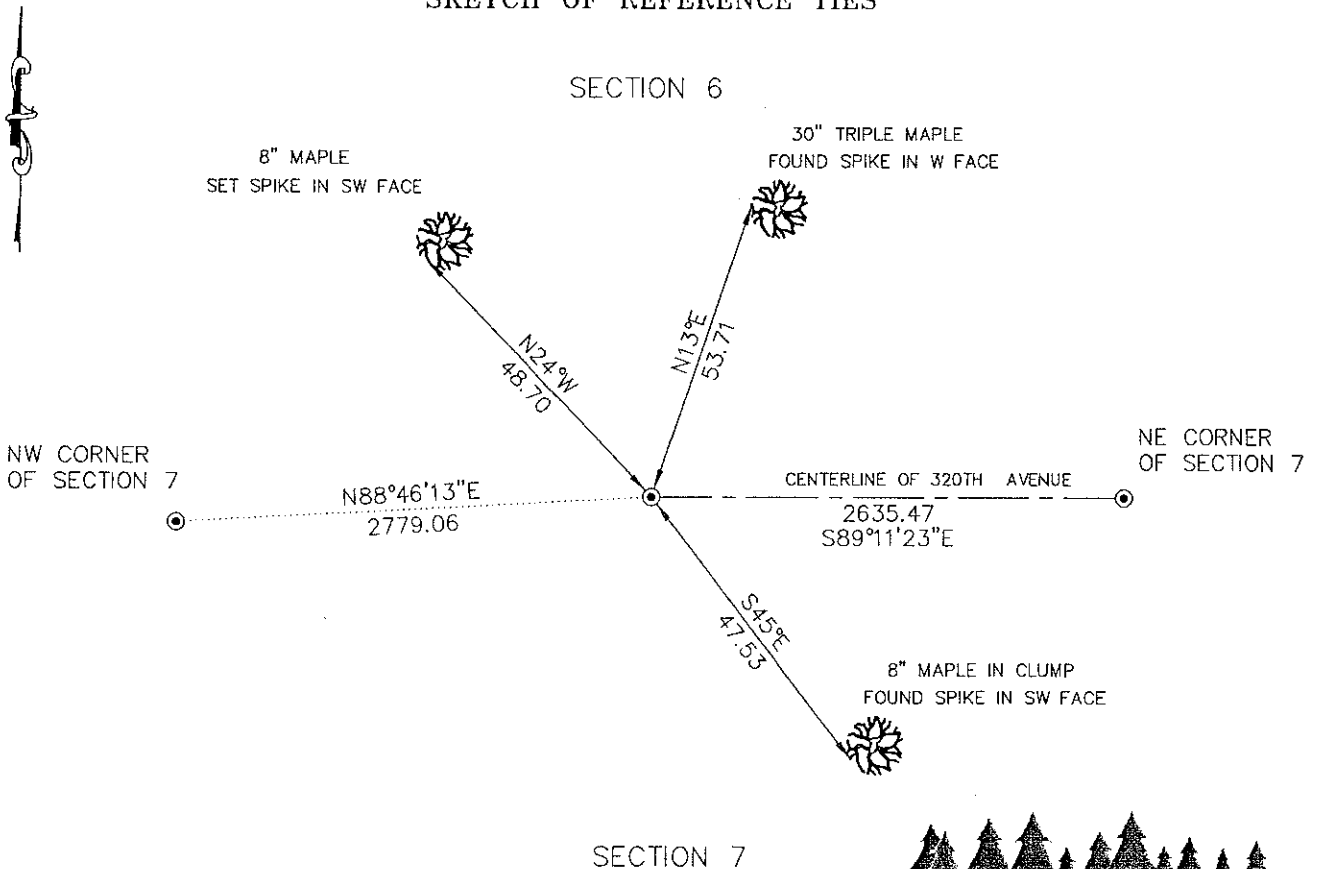
North Quarter Corner of Section 7, Township 41, Range 22,  
4th Principal Meridian, Kanabec County, State of Minnesota

At the corner location shown on the sketch:  
On 12/23/2009 Placed a 7/8" X 20" CAPPED  
REBAR Monument.

Kanabec County U.S. Survey Feet Coordinates  
NAD 1983, HARN 1996 Adjustment  
Obtained by RTK GPS observation  
Northing: 218059.1518  
Easting: 431631.9431

Note: NAD 1983, HARN 1996 Adjustment  
coordinates are NOT compatible with  
NAD 1983 coordinates  
Note: 1 Meter = 3937/1200 U.S. Survey Feet

## SKETCH OF REFERENCE TIES



114/39



**Kroschel Land Surveyors, Inc.**  
1639 Main Street North, Suite 6, Pine City, MN 55063  
Phone: 320-629-3267 Fax: 320-629-0176

Statement of evidence relative to this corner location is on back of page.

I hereby certify that this document and the data contained herein was prepared by me or under my direct supervision.

Signature: [Handwritten Signature] Date: 12-29-2009

License No. 44490

- Land Surveyor
- Professional Engineer
- County Surveyor
- County Engineer

**OFFICE OF THE COUNTY RECORDER**  
County of Kanabec

I hereby certify that this document was filed in the County Recorders office at \_\_\_\_\_ .M. on the \_\_\_\_\_ day of \_\_\_\_\_ A.D., 20\_\_\_\_

County Recorder \_\_\_\_\_  
By \_\_\_\_\_, Deputy

DOCUMENT NO. \_\_\_\_\_

Statement of Evidence:

In November of 1855, Deputy Surveyor Isaac Banker set a post to mark the North Quarter Corner of Section 7, Township 41 North, Range 22 West, 4th Principal Meridian.

Reference ties were taken to:

- 20 inch White Birch at South 42 degrees 30 minutes East a distance of 24 links
- 16 inch Balsam at North 12 degrees West a distance of 31 links

All of the original Government corner evidence was searched for. None was found.

There is no resurvey data available for this corner.

In March 2004 County Surveyor Ernie Rud, RLS 9808 set a temporary spike at the centerline of the east/west road and proportional distance between the Northeast and Northwest corners of Section 7 and established reference ties.

In December 2009, a survey was made around Section 7, Township 41 North, Range 22 West, 4th Principal Meridian for Chad Oslin to locate existing monuments, lines of occupation and establish search areas.

On 12/02/2009, we made a 12' x 15' x 2.5' deep excavation with a front end loader at the centerline of the east/west road and proportional distance between the Northeast and Northwest corners of Section 7. No evidence of the corner was found in the excavation. Mr. Rud's spike was gone. We also made a search with a magnetic locator at a lost position, approximately 50 feet south of the centerline of the east/west road. No evidence of the corner was found.

On 12/23/2009 set a 7/8" x 20" Rebar Monument with Aluminum Cap at the centerline of the road and proportional distance between the Northeast and Northwest corners of Section 7. Established reference ties and assigned Kanabec County Coordinates.

This location is determined to be the best available evidence of the original corner location.

Talking with local residents, most believed the section line was south of the road, but none had any direct testimony of the location of the original corner. I contacted the County Recorder, County Auditor and Pomroy Township for road information. None had any road order or recorded easement for 320th Avenue.



**Kroschel Land Surveyors, Inc.**

1639 Main Street North, Suite 6, Pine City, MN 55063  
Phone: 320-629-3267 Fax: 320-629-0176