

CERTIFICATE OF LOCATION OF GOVERNMENT CORNER

N 1/4 Corner of Section 8, Township 41, Range 22, 4TH P.M.

STATE OF MINNESOTA, County of KANABEC

At the corner location shown on the sketch:

Found a #7 copped rebar

Kanabec County U.S. Survey Feet Coordinates
NAD 1983, HARN 1996 Adjustment
Obtained by RTK GPS Observation

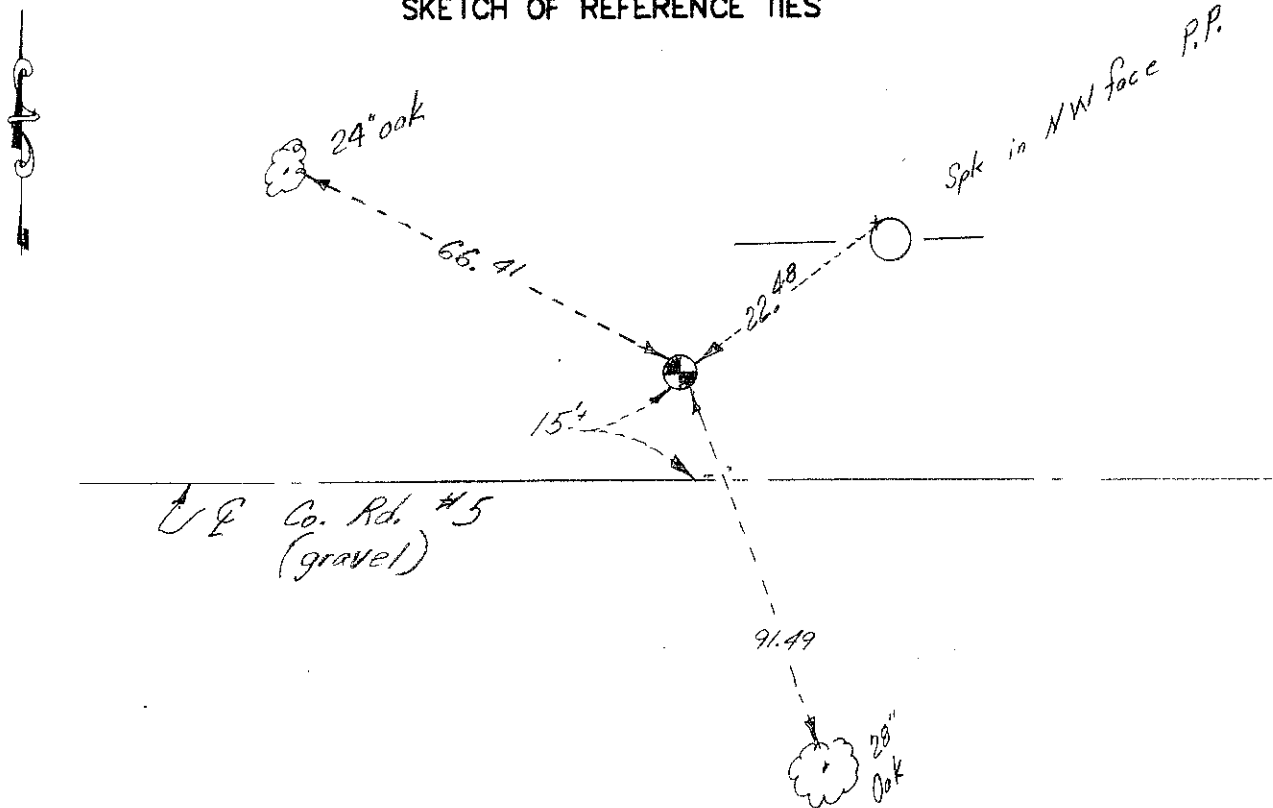
Northing= 218246.35

Easting= 437031.43

Note: NAD 1983, HARN 1996 Adjustment
coordinates are NOT compatible with
NAD 1983 coordinates

Note: 1 Meter=3937/1200 U.S. Survey Feet

SKETCH OF REFERENCE TIES



Statement of evidence relative to this corner location is on back of page.

I hereby certify that this document and the data contained herein was prepared by me or under my direct supervision.

Ernest Lund 7-18-2012
Signature Date

Registration No. Minn No. 9808

- Land Surveyor, Professional Engineer
- County Surveyor, County Engineer

OFFICE OF THE COUNTY RECORDER

County of _____

I hereby certify that this document was filed in the County Recorder's office at _____ M. on the

_____ day of _____ A.D., 20__

County Recorder _____

BY _____ Deputy

DOCUMENT NO. _____

STATEMENT OF EVIDENCE: NORTH ¼ corner, 8-41-22 4122131

All of the original government bearing trees are now gone.

In 1903, former County Surveyor, John Nelson, made a road survey per the town road order on file at the County Auditor's Office for a town road to be laid out along the north line of Section 8. This survey does not show the quarter corner, but shows a straight line between section corners.

In September of 1994, M.B. Rude made a survey along the north line of Section 8, Township 41, Range 22, to locate the existing monuments, lines of occupation and to establish search areas.

On September 29, 1994, he made a 3' by 15' by 15' excavation with a backhoe. No evidence of the corner was found in the excavation.

He set the north quarter corner of Section 8, Township 41, Range 22, on line and at a proportional measurement between the northwest and northeast corners of Section 8, Township 41, Range 22.

On July 18, 2012, E.G. Rud & Sons located this corner, verified reference ties and established Kanabec County coordinates on this position.
