

# CERTIFICATE OF LOCATION OF GOVERNMENT CORNER

NE Corner of Section 7, Township 41, Range 22, 4<sup>TH</sup> P.M.

STATE OF MINNESOTA, County of KANABEC

At the corner location shown on the sketch:

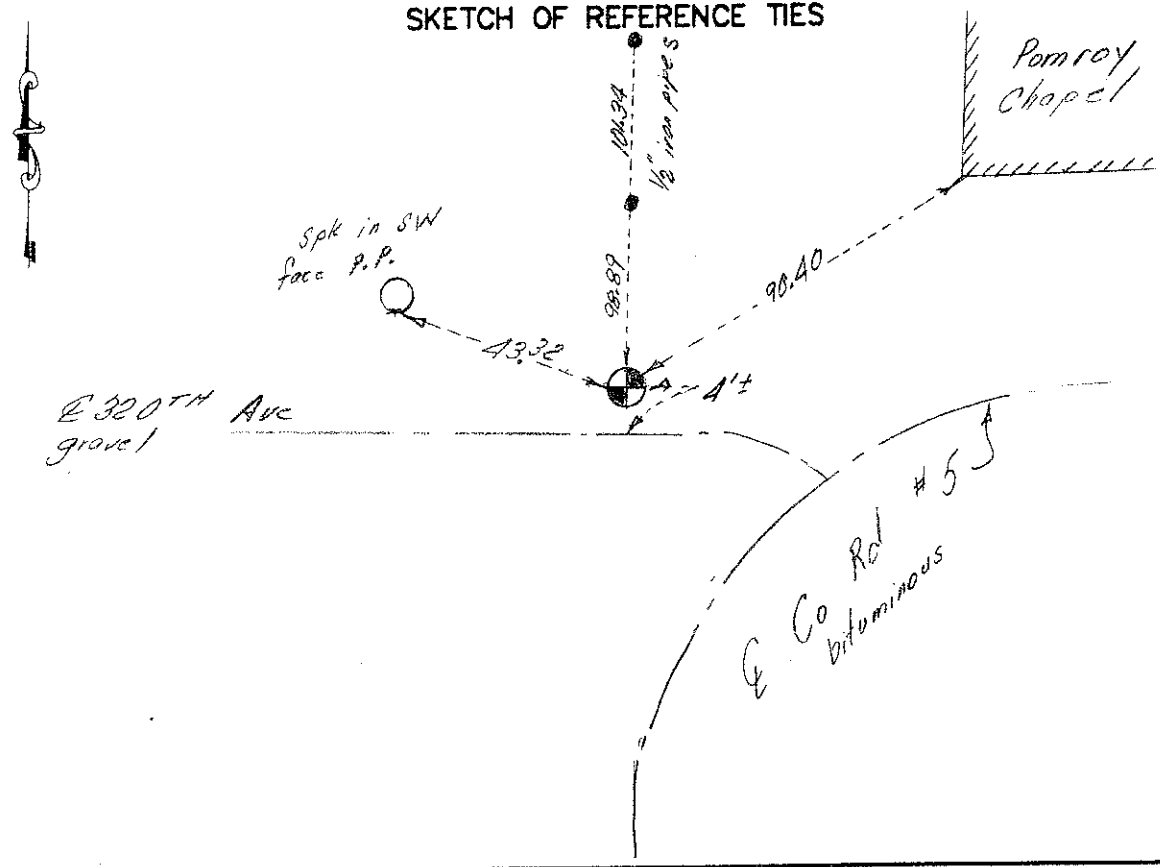
*Found # 7 rebar down 10" set  
a 1/2" x 8" iron pipe with cap*

Kanabec County U.S. Survey Feet Coordinates  
NAD 1983, HARN 1996 Adjustment  
Obtained by RTK GPS Observation

Northing= 218022.04  
Easting= 434267.19

Note: NAD 1983, HARN 1996 Adjustment  
coordinates are NOT compatible with  
NAD 1983 coordinates  
Note: 1 Meter=3937/1200 U.S. Survey Feet

### SKETCH OF REFERENCE TIES



Statement of evidence relative to this corner location is on back of page.

I hereby certify that this document and the data contained herein was prepared by me or under my direct supervision.

Ernest J. Reed 7-18-2012  
Signature Date

Registration No. Miss No. 9808

- Land Surveyor,      [ ] Professional Engineer
- [ ] County Surveyor,    [ ] County Engineer

### OFFICE OF THE COUNTY RECORDER

County of \_\_\_\_\_

I hereby certify that this document was filed in the County Recorder's office at \_\_\_\_\_ M. on the \_\_\_\_\_ day of \_\_\_\_\_ A.D., 20\_\_\_\_

County Recorder \_\_\_\_\_

BY \_\_\_\_\_ Deputy

DOCUMENT NO. \_\_\_\_\_

All of the original government bearing trees are now gone.

In 1903, former County Surveyor, John Nelson, made a road survey per the town road order on file at the County Auditor's Office, for a town road to run south and east from this corner.

In September of 1994, M.B. Rude made a survey along the north and west lines of Section 8, Township 41, Range 22, to locate existing monuments, lines of occupation and to establish search areas. This corner falls at the intersection of roads, east-west and south.

On October 4, 1994, he made a 3' by 15' by 25' excavation with a backhoe. We found an 8" by 10" by 18" sandstone with a cross mark at this corner.

The sandstone was accepted as the perpetuated location of this corner.

On July 18, 2012, E.G. Rud & Sons found a #7 capped rebar down 10" at this location, verified reference ties and established Kanabec County coordinates on this position. A ½" x 8" iron pipe with a plastic cap marked R.L.S. No. 9808 as set over the monument.

---