

# CERTIFICATE OF LOCATION OF GOVERNMENT CORNER

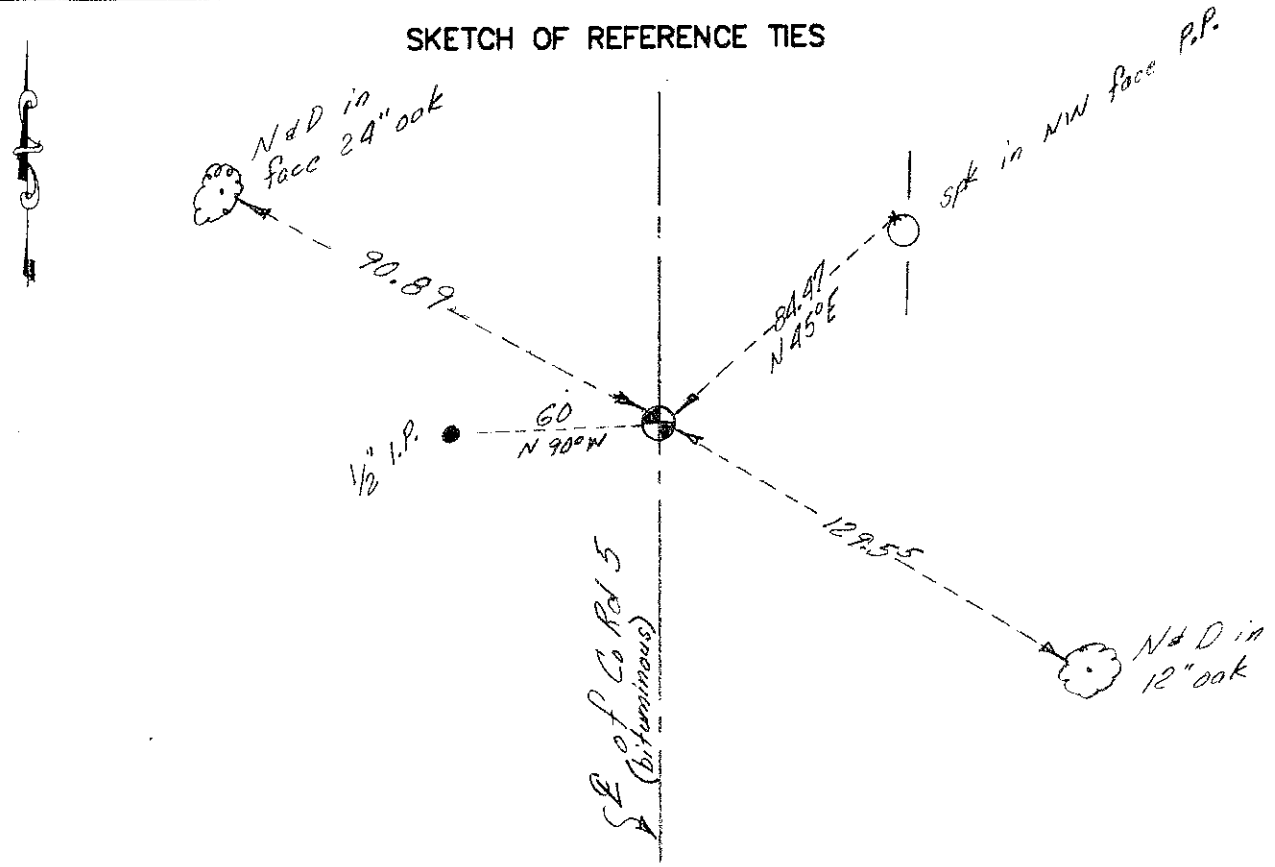
E 1/4 Corner of Section 7, Township 41, Range 22, 4<sup>TH</sup> P.M.

STATE OF MINNESOTA, County of KANABEC

At the corner location shown on the sketch:  
*found # 7 rebar down 12". Set 1/2" I.P.  
 at surface with cap marked RLS #9808*

Kanabec County U.S. Survey Feet Coordinates  
 NAD 1983, HARN 1996 Adjustment  
 Obtained by RTK GPS Observation  
 Northing= 215386.74  
 Easting= 434214.25  
 Note: NAD 1983, HARN 1996 Adjustment  
 coordinates are NOT compatible with  
 NAD 1983 coordinates  
 Note: 1 Meter=3937/1200 U.S. Survey Feet

### SKETCH OF REFERENCE TIES



Statement of evidence relative to this corner location is on back of page.

I hereby certify that this document and the data contained herein was prepared by me or under my direct supervision.

Ernest L. Reed 7-18-2012  
Signature Date

Registration No. Minn No. 9808

- Land Surveyor,       Professional Engineer  
 County Surveyor,     County Engineer

### OFFICE OF THE COUNTY RECORDER

County of \_\_\_\_\_

I hereby certify that this document was filed in the County Recorder's office at \_\_\_\_\_ M. on the \_\_\_\_\_ day of \_\_\_\_\_ A.D., 20\_\_\_\_

County Recorder \_\_\_\_\_  
 BY \_\_\_\_\_ Deputy

DOCUMENT NO. \_\_\_\_\_

STATEMENT OF EVIDENCE: E1/4 7-41-22 4122129

All of the original government bearing trees are now gone.

In 1903, former County Surveyor, John Nelson, made a road survey per the town road order on file at the County Auditor's Office for a townroad along the east line of Section 7. No monument was shown for this corner and his survey shows a straight line between the northeast and southeast corners of Section 7.

In September of 1994, M.B. Rude made a survey along the east line of Section 7, Township 41, Range 22, to locate existing monuments, lines of occupation and to establish search areas.

On October 4, 1994, he made two 3' by 15' by 15' excavations with a backhoe at the occupation lines east and west at this corner. No evidence was found in either excavation.

He set this corner on line and a split from the northeast to the southeast corner of Section 7.

This corner was removed during roadway construction in 1997. The County Highway survey crew located the quarter corner prior to construction and placed additional references outside of the new construction limits.

Before the roadway was paved in 1998, the corner was re-established according to references obtained previously. Additional references were also placed.

On July 18, 2012, E.G. Rud & Sons located this monument down 12" verified reference ties and established Kanabec County coordinates on this position. A 1/2" x 8" I.P. with plastic cap marked RLS #9808 was set over the monument.