

# CERTIFICATE OF LOCATION OF GOVERNMENT CORNER

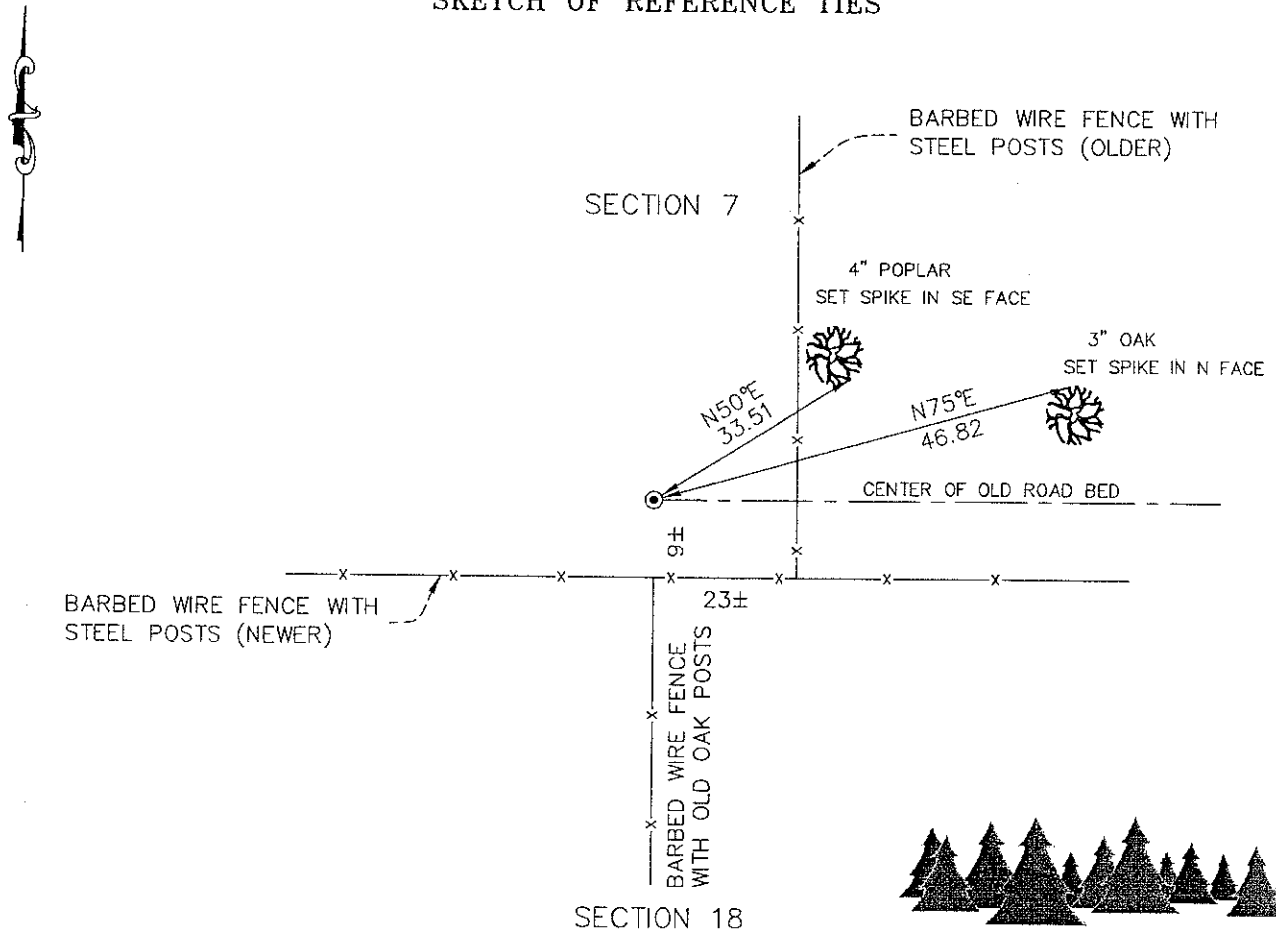
North Quarter Corner of Section 18, Township 41, Range 22,  
4th Principal Meridian, Kanabec County, State of Minnesota

At the corner location shown on the sketch:  
On 12/22/2009 found a 1" Square Pin with a 3" x 11" x 13" Sandstone placed on top.

Kanabec County U.S. Survey Feet Coordinates  
NAD 1983, HARN 1996 Adjustment  
Obtained by RTK GPS observation  
Northing: 212749.9742  
Easting: 431498.9392

Note: NAD 1983, HARN 1996 Adjustment  
coordinates are NOT compatible with  
NAD 1983 coordinates  
Note: 1 Meter = 3937/1200 U.S. Survey Feet

## SKETCH OF REFERENCE TIES

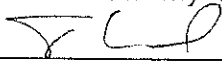


**Kroschel Land Surveyors, Inc.**

1639 Main Street North, Suite 6, Pine City, MN 55063  
Phone: 320-629-3267 Fax: 320-629-0176

Statement of evidence relative to this corner location is on back of page.

I hereby certify that this document and the data contained herein was prepared by me or under my direct supervision.



Signature

12 - 29 - 2009

Date

License No. 44490

- Land Surveyor       Professional Engineer  
 County Surveyor       County Engineer

### OFFICE OF THE COUNTY RECORDER

County of Kanabec

I hereby certify that this document was filed in the County Recorders office at \_\_\_\_\_ .M. on the \_\_\_\_\_ day of \_\_\_\_\_ A.D., 20\_\_\_\_

County Recorder \_\_\_\_\_  
By \_\_\_\_\_, Deputy

DOCUMENT NO. \_\_\_\_\_

Statement of Evidence:

In November of 1855, Deputy Surveyor Isaac Banker set a post to mark the North Quarter Corner of Section 18, Township 41 North, Range 22 West, 4th Principal Meridian.

Reference ties were taken to:

- 8 inch White Pine at South 49 degrees 15 minutes East a distance of 9 links
- 10 inch White Pine at North 12 degrees West a distance of 12 links

All of the original Government corner evidence was searched for. None was found.

There is no resurvey data available for this corner.

In December 2009, a survey was made around Section 7, Township 41 North, Range 22 West, 4th Principal Meridian for Chad Oslin to locate existing monuments, lines of occupation and establish search areas.

On 12/21/2009 we made a search with a magnetic locator at the intersection of the centerline of an old road bed east/west and an old fence line south. We found a 1" Square Pin, down 10". On top of the pin was a 3" x 11" x 13" sandstone with no markings. We left the Pin as found. Assigned Kanabec County coordinates and established reference ties.

This location is determined to be the best available evidence of the original corner location.

We also found a 7/8" Capped Rebar set at a lost position by County Surveyor Ernie Rud, RLS 9808, approximately 18 feet east and 8 feet north of the Found Square Pin. I contacted Mr. Rud and he directed me to remove the 7/8" Rebar. He stated he had never used its position for any surveys.



**Kroschel Land Surveyors, Inc.**

1639 Main Street North, Suite 6, Pine City, MN 55063  
Phone: 320-629-3267 Fax: 320-629-0176