

CERTIFICATE OF LOCATION OF GOVERNMENT CORNER

North Quarter Corner of Section 17, Township 41 North, Range 22 West,
4th Principal Meridian, Kanabec County, State of Minnesota

At the corner location shown on the sketch:

On 6/07/2012 set a 7/8" x 36" Rebar Monument with Aluminum Cap.

Kanabec County U.S. Survey Feet Coordinates
NAD 1983, HARN 1996 Adjustment
Obtained by RTK GPS observation
Northing: 212976.5806
Easting: 436958.8905

Note: NAD 1983, HARN 1996 Adjustment coordinates are NOT compatible with NAD 1983 coordinates

Note: 1 Meter = 3937/1200 U.S. Survey Feet

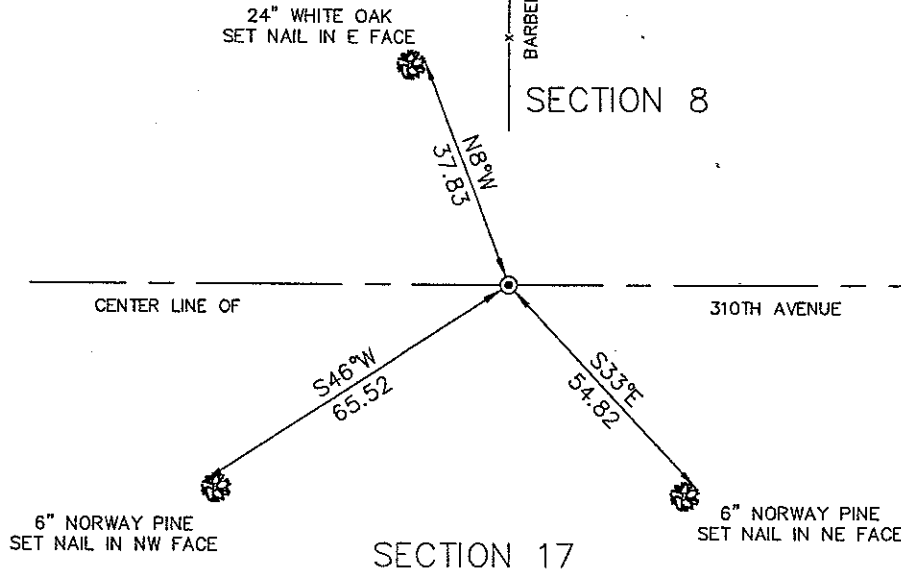
SKETCH OF REFERENCE TIES

KROSCHEL LAND SURVEYORS, INC.
ASSUMES NO LIABILITY FOR THE ACCURACY OF THE GPS COORDINATES SHOWN HEREON.
ALL COORDINATES AND DIMENSIONS SHOULD BE FIELD VERIFIED BY THE USER.

NOT TO SCALE

BEARINGS SHOWN TO REFERENCE TIES ARE MAGNETIC COMPASS BEARINGS
DISTANCE UNITS FOR THIS DRAWING IS U.S. SURVEY FEET

THE BASIS OF BEARINGS FOR THIS DRAWING IS THE KANABEC COUNTY COORDINATE SYSTEM BY MNDOT, NAD 1983, HARN 1996 ADJUSTMENT



111/77



Kroschel Land Surveyors, Inc.

1639 Main Street North, Suite 6, Pine City, MN 55063
Phone: 320-629-3267 Fax: 320-629-0176

Statement of evidence relative to this corner location is on back of page.

I hereby certify that this survey, plan, or report was prepared by me or under my direct supervision, that the United States public land survey monument record is correct and complete to the best of my knowledge and belief, and that I am a duly Licensed Land Surveyor under the laws of the State of Minnesota.

Tyler J. Kroschel 6-21-2012
Date

License No. 44490
 Land Surveyor County Surveyor

OFFICE OF THE COUNTY RECORDER
County of Kanabec

I hereby certify that this document was filed in the County Recorder's office at _____ M. on the _____ day of _____ A.D., 20____

County Recorder _____
By _____, Deputy

DOCUMENT NO. _____

Statement of Evidence:

In October of 1855, Deputy Surveyor Isaac Banker set a post to mark the Northeast Corner of Section 17, Township 41 North, Range 22 West, 4th Principal Meridian.

Reference ties were taken to:

14 inch Aspen at North 10 degrees 15 minutes West a distance of 9 links

19 inch Aspen at South 20 degrees 30 minutes East a distance of 20 links

All of the original Government corner evidence was searched for. None was found.

1908--Surveyor J.B. Vickery made a survey for a township road along the north line of Section 17, per the records of the Kanabec County Highway Department. He measured a distance of 80.10 chains (same distance as the GLO). He does not give any information to the North Quarter corner.

In January 2012, a survey was made around Section 17, Township 41 North, Range 22 West, 4th Principal Meridian for Cory Oslin to locate existing monuments, lines of occupation and establish search areas. We located old fence lines along the north line of Sections 16 and 17.

Carl Schwantke, age 96 and lifetime resident in Section 8, testified the fence line running north from this corner has been there as long as he can remember.

On 1/03/2012 a search was made by checking with a magnetic locator. No evidence of corner was found. On 6/07/2012 we made two excavations with a trackhoe. The first was a 15' x 15' x 3.5' deep excavation at the center of the township road and fence line north. The second was a 15' x 15' x 3.5' deep excavation at the center of the township road and Government distance from the Northwest corner of Section 17. No evidence of the corner was found in either excavation.

We measured 1401 feet± from the Northwest corner of Section 17 east to an old fence line running south. We measured 1405 feet± from this fence line to an old fence line running north at the North Quarter corner of Section 17. We measured 1403 feet± from this fence east to an old fence line running north.

I established this corner on the center line of the township road and fence line north extended south. This location fits the old fence lines to the east and west.

The distance along the north line of Section 17 is quite long (5612 feet±). The distance along the south line of Section 17 is also quite long (5455 feet±). The distance along the north line of Section 8 is also quite long (5547 feet±).

On 6/7/2012 I set a 7/8" x 36" Rebar Monument with Aluminum Cap, established reference ties and assigned Kanabec County Coordinates. This location was determined to be the best available evidence of the original government corner location.



Kroschel Land Surveyors, Inc.

1639 Main Street North, Suite 6, Pine City, MN 55063
Phone: 320-629-3267 Fax: 320-629-0176