

# CERTIFICATE OF LOCATION OF GOVERNMENT CORNER

NE Corner of Section 18, Township 41, Range 22, 4<sup>TH</sup> P.M.

STATE OF MINNESOTA, County of KANABEC

At the corner location shown on the sketch:

*found #7 rebar with cap down 12". Set a 1/2" x 10" iron pipe at surface*

Kanabec County U.S. Survey Feet Coordinates  
NAD 1983, HARN 1996 Adjustment  
Obtained by RTK GPS Observation

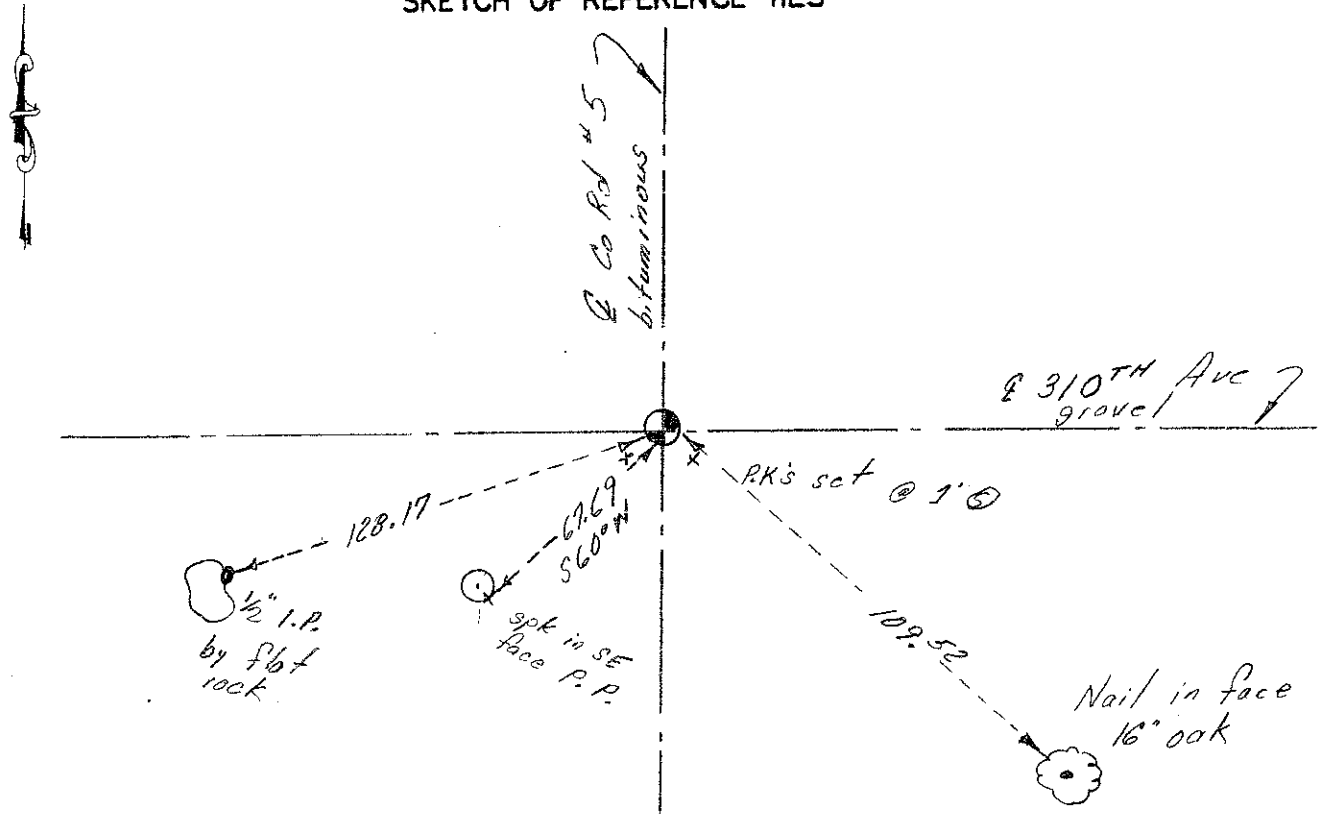
Northing= 212751.55

Easting= 434161.47

Note: NAD 1983, HARN 1996 Adjustment coordinates are NOT compatible with NAD 1983 coordinates

Note: 1 Meter=3937/1200 U.S. Survey Feet

## SKETCH OF REFERENCE TIES



Statement of evidence relative to this corner location is on back of page.

I hereby certify that this document and the data contained herein was prepared by me or under my direct supervision.

Ernest J. Rud  
Signature

7-19-2012  
Date

Registration No. Minn No. 9808

- Land Surveyor,       Professional Engineer
- County Surveyor,     County Engineer

## OFFICE OF THE COUNTY RECORDER

County of \_\_\_\_\_

I hereby certify that this document was filed in the County Recorder's office at \_\_\_\_\_ M. on the

\_\_\_\_\_ day of \_\_\_\_\_ A.D., 20\_\_

County Recorder \_\_\_\_\_

BY \_\_\_\_\_ Deputy

DOCUMENT NO. \_\_\_\_\_

All of the original government bearing trees are now gone.

In 1903, former County Surveyor, John Nelson, made a road survey per the town road order on file at the County Recorder's Office for a town road along the east line of Section 7 and 18.

In September of 1994, M.B. Rude made a survey along the east line of Section 18, Township 41, Range 22, to locate the existing monuments, lines of occupation and establish search areas. This corner falls at the intersection of roads north-south and east.

In 1937, former County Surveyor, Frank Turnacliff found a stone with a crossmark and left it in place, per the certificate on file at the County Recorder's Office.

On October 4, 1994, M.B. Rude made two 2.5' by 15' by 15' excavations with a backhoe at the centerline intersection and at the two measurements per the road survey from 1903. A sandstone was found at this corner. The top of it with the crossmark appears to have been broken off.

It appears that the stone monument found in 1937 was the sandstone found and was accepted as the perpetuated location of this corner from 1903.

The corner was removed during road construction in 1997. The county survey crew located the section corner prior to construction and placed additional references outside of the new construction limits.

Before the roadway was paved in 1998, the corner was re-established according to references obtained previously. Additional references were also placed.

On July 19, 2012, E.G. Rud & Sons locate this monument down 12" verified ties and established Kanabec County coordinates on this position. A ½" x 12" iron pipe with a plastic cap marked RLS No. 9808 was set over the monument.