

# CERTIFICATE OF LOCATION OF GOVERNMENT CORNER

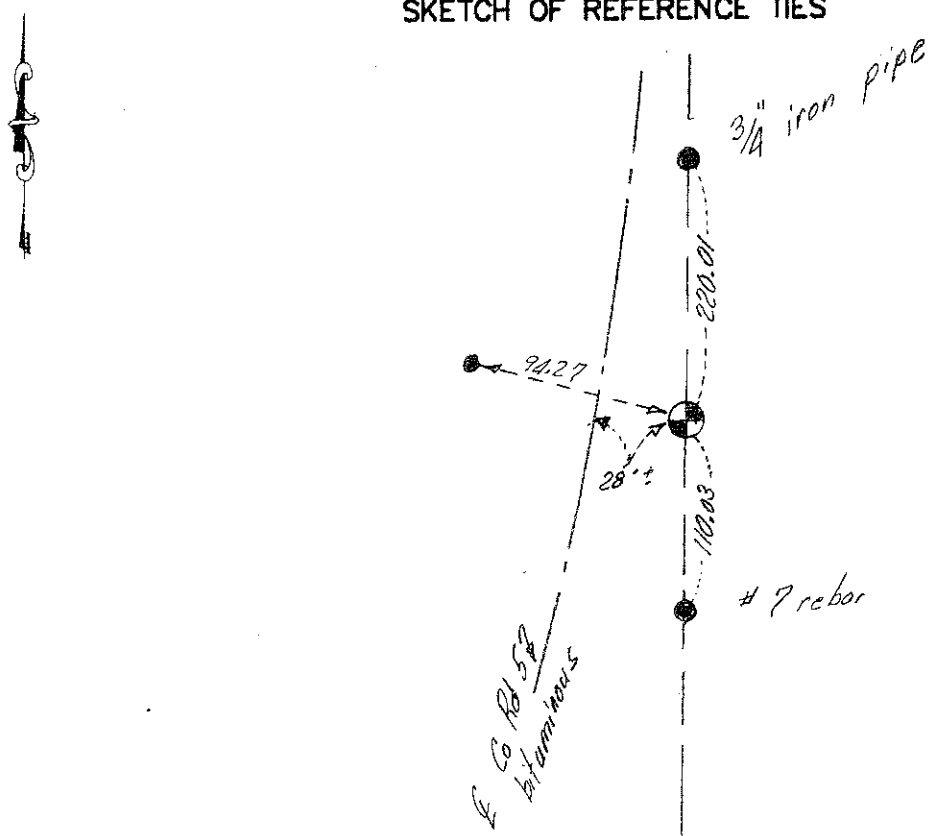
E 1/4 Corner of Section 18, Township 41, Range 22, 4<sup>th</sup> P.M.

STATE OF MINNESOTA, County of KANABEC

At the corner location shown on the sketch:  
*found #7 rebar in side slope of Co. Rd. #5*

Kanabec County U.S. Survey Feet Coordinates  
NAD 1983, HARN 1996 Adjustment  
Obtained by RTK GPS Observation  
Northing= 210093.74  
Easting= 434159.17  
Note: NAD 1983, HARN 1996 Adjustment coordinates are NOT compatible with NAD 1983 coordinates  
Note: 1 Meter=3937/1200 U.S. Survey Feet

### SKETCH OF REFERENCE TIES



Statement of evidence relative to this corner location is on back of page.

I hereby certify that this document and the data contained herein was prepared by me or under my direct supervision.

Ernest L. Rud 7-18-2012  
Signature Date

Registration No. Minn No. 9808

- Land Surveyor,  Professional Engineer
- County Surveyor,  County Engineer

### OFFICE OF THE COUNTY RECORDER

County of \_\_\_\_\_

I hereby certify that this document was filed in the County Recorder's office at \_\_\_\_\_ M. on the \_\_\_\_\_ day of \_\_\_\_\_ A.D., 20\_\_\_\_

County Recorder \_\_\_\_\_  
BY \_\_\_\_\_ Deputy

DOCUMENT NO. \_\_\_\_\_

All of the original government bearing trees are now gone.

In 1903, the former County Surveyor, John Nelson, made a road survey per the town order at the County Auditor's Office.

In September of 1994, M.B. Rude made a survey along the east line of Section 18, Township 41, Range 22, to locate existing monuments, line of occupation and establish search areas.

On October 5, 1994, M.B. Rude made three 2.5 by 15' by 15' excavations with a backhoe. One was at the line occupation west, one was at a measurement from the northeast corner of Section 18, Township 41, Range 22 per the 1903 road survey and the third was at a proportional measurement from the fence at the 1/16 corner line south. No evidence of this corner was found in the excavations.

There is evidence of an old road bed extended from the southeast corner of Section 18 northerly. This old road bed is east of the existing county road and is in harmony with the road survey from 1903.

He set this corner on the extension of the old road bed from the south and proportional measurement from the 1903 road survey. This corner is approximately 316 feet south of a split of the east line of Section 18.

This corner was removed during road construction in 1997. The County Hwy Survey crew located the quarter corner prior to construction and placed additional references outside of the new construction limits.

Before the roadway was paved in 1998, the corner was re-established according to references obtained previously. Additional references were also placed.

On July 18, 2012, E.G. Rud & Sons found this monument, but it had been graded out and was lying horizontal below the sod line. The monument was reset using the reference ties and Kanabec County coordinates established on this position.