

CERTIFICATE OF LOCATION OF GOVERNMENT CORNER

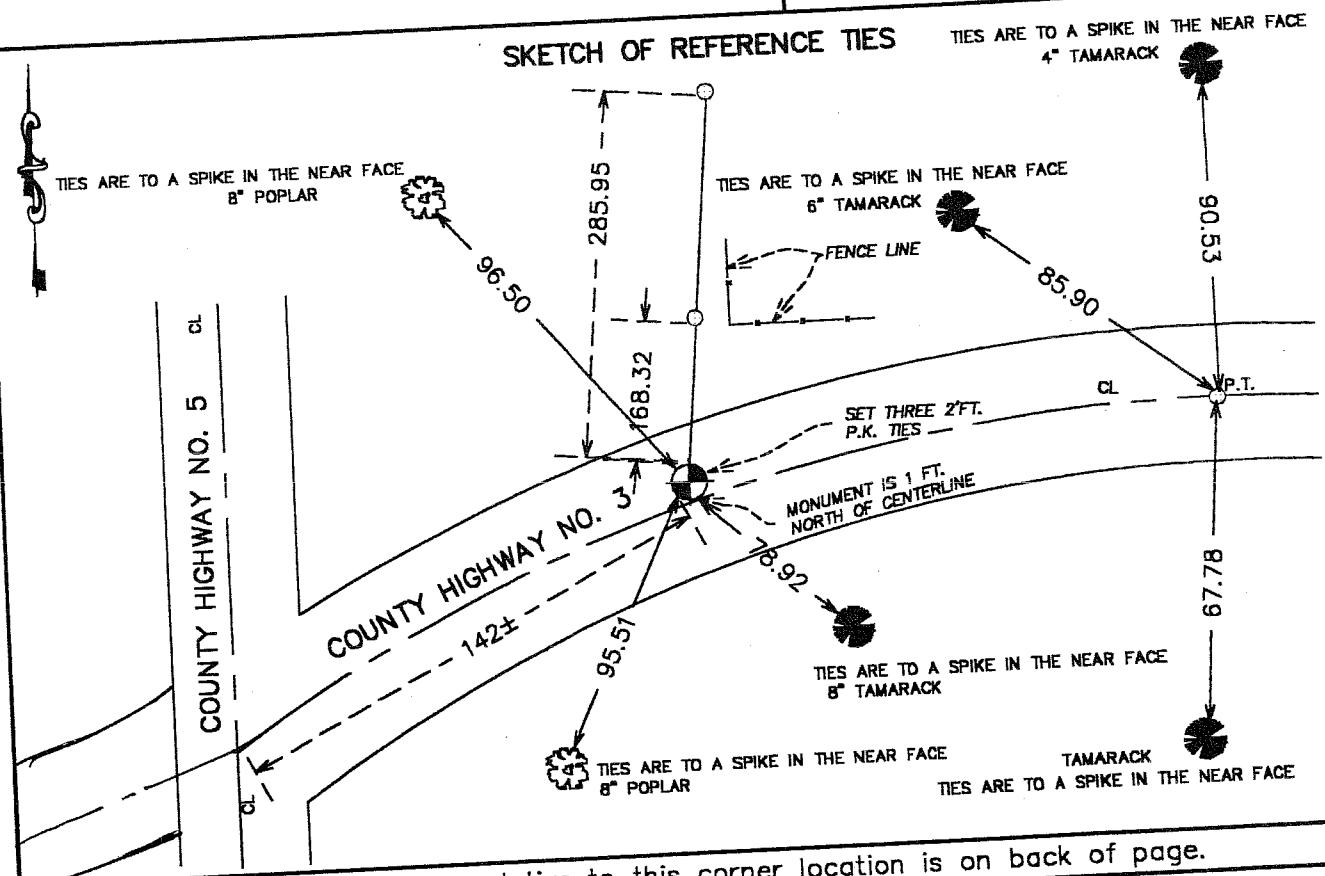
NORTHEAST Corner of Section 19, Township 41, Range 22, 4TH P.M.

STATE OF MINNESOTA, County of KANABEC

At the corner location shown on the sketch:
On 04/09/2002 Found a 7/8" X 24" CAPPED REBAR.
Down 0.6' feet.

Kanabec County U.S. Survey Feet Coordinates
NAD 1983, HARN 1996 Adjustment
Obtained by RTK GPS Observation
Northing= 208068.33166
Easting= 434193.70285
Note: NAD 1983, HARN 1996 Adjustment
coordinates are NOT compatible with
NAD 1983 coordinates
Note: 1 Meter=3937/1200 U.S. Survey Feet

SKETCH OF REFERENCE TIES



Statement of evidence relative to this corner location is on back of page.

I hereby certify that this document and the data contained herein was prepared by me or under my direct supervision.

Ernest J. Rud 12-20-2002
Signature Date

Registration No. 9808

- Land Surveyor, Professional Engineer
- County Surveyor, County Engineer

OFFICE OF THE COUNTY RECORDER

County of _____
I hereby certify that this document was filed in the County Recorder's office at _____ M. on the _____ day of _____ A.D., 20 _____

County Recorder _____
BY _____ Deputy

DOCUMENT NO. _____