

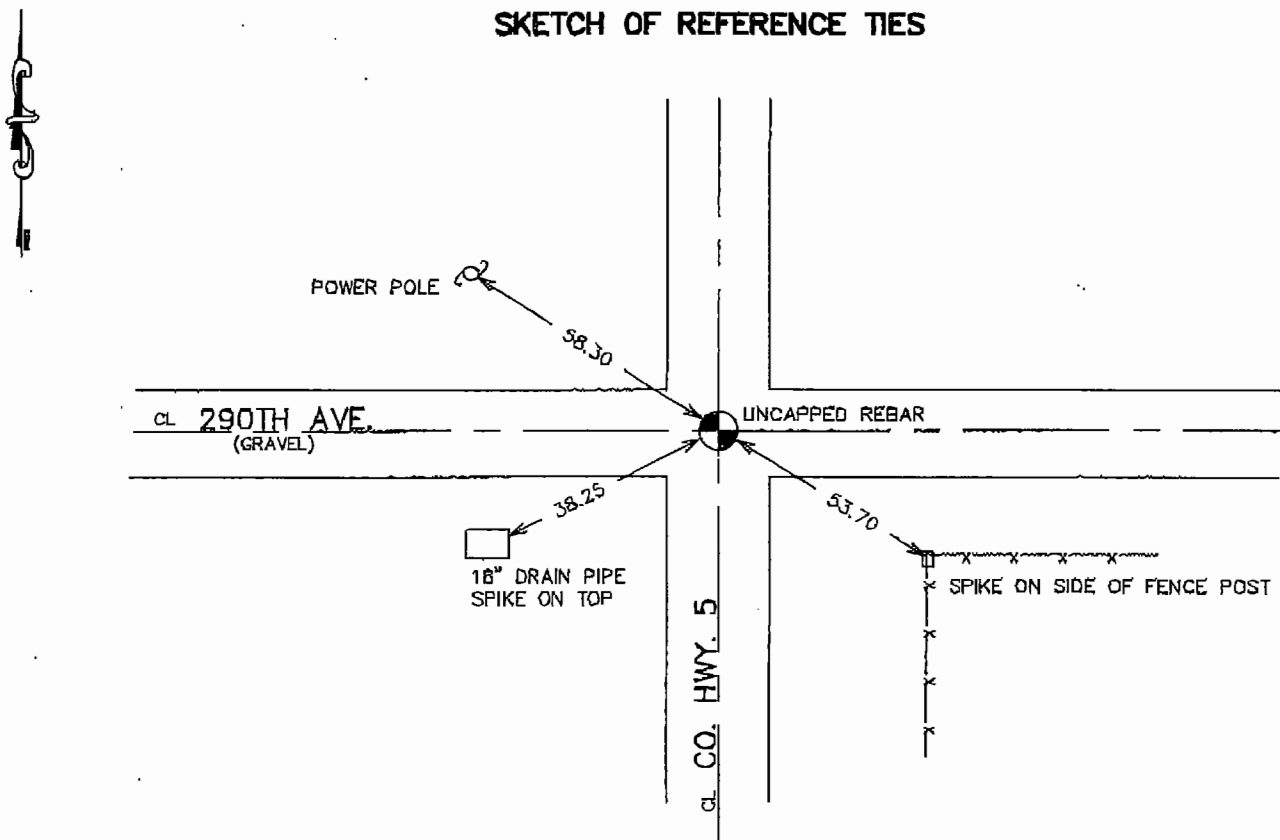
# CERTIFICATE OF LOCATION OF GOVERNMENT CORNER

NORTHEAST Corner of Section 30, Township 41, Range 22, 4TH P.M.  
STATE OF MINNESOTA, County of KANABEC

At the corner location shown on the sketch:  
FOUND THIS MONUMENT  
AND ESTABLISHED G.P.S. COORDINATES ON ITS LOCATION.

Kanabec County U.S. Survey Feet Coordinates  
NAD 1983, HARN 1996 Adjustment  
Obtained by RTK GPS Observation  
Northing= 202784.26  
Easting= 433977.17  
Note: NAD 1983, HARN 1996 Adjustment  
coordinates are NOT compatible with  
NAD 1983 coordinates  
Note: 1 Meter=3937/1200 U.S. Survey Feet

## SKETCH OF REFERENCE TIES



Statement of evidence relative to this corner location is on back of page.

I hereby certify that this document and the data contained herein was prepared by me or under my direct supervision.

Ernest Shred 9-11-2006  
Signature Date

Registration No. Minn No 9808

Land Surveyor,  Professional Engineer

County Surveyor,  County Engineer

## OFFICE OF THE COUNTY RECORDER

County of \_\_\_\_\_

I hereby certify that this document was filed in the County Recorder's office at \_\_\_\_\_ M. on the \_\_\_\_\_ day of \_\_\_\_\_ A.D., 20\_\_\_\_

County Recorder \_\_\_\_\_

BY \_\_\_\_\_ Deputy

DOCUMENT NO. \_\_\_\_\_

## NORTHEAST CORNER SECTION 30, T41, R22

**STATEMENT OF EVIDENCE**

THE ORIGINAL CORNER WAS SET BY DEPUTY SURVEY BANKER IN NOVEMBER 1855. ANY EVIDENCE TO THE CORNER OR BEARING TREES NO LONGER REMAIN. NO RECORDS OF CORNER TIES COULD BE FOUND FOR THIS CORNER.

IN JUNE 1987 M.B. RUDE MADE A SURVEY AROUND SECTION 19 TO LOCATE EXISTING MONUMENTS AND LINES OF OCCUPATION.

M.B. RUDE USED THE SOUTHEAST CORNER OF SECTION 19 TO SET THE EAST QUARTER OF SECTION 19 AT THAT TIME.

IN JUNE 2006 E.G. RUD MADE A SURVEY ALONG COUNTY ROAD NO. 5 AND FOUND A #7 REBAR AT THE INTERSECTION OF A BLACKTOP ROAD RUNNING NORTH-SOUTH AND A GRAVEL ROAD RUNNING EAST-WEST. THIS REBAR FIT VERY CLOSELY TO A LINE EXTENDED SOUTH FROM THE NORTHEAST CORNER OF SECTION 19 AND THROUGH THE EAST QUARTER CORNER OF SECTION 19. THIS ALSO PUT THE EAST QUARTER CORNER OF SECTION 19 WITHIN 0.25 FEET OF LINE AND SPLIT BETWEEN NORTHEAST CORNER AND REBAR AT SOUTHEAST CORNER.

THEREFORE E.G. RUD ACCEPTED THIS REBAR AS THE PERPETUATED LOCATION FOR THIS CORNER BASED ON PREVIOUS MEASUREMENTS AND LINES OF OCCUPATION.

KANABEC COUNTY COORDINATES WERE ESTABLISHED ON THIS CORNER USING G.P.S. EQUIPMENT.