

CERTIFICATE OF LOCATION OF GOVERNMENT CORNER

NORTH QUARTER Corner of Section 31, Township 41, Range 22, 4TH P.M.

STATE OF MINNESOTA, County of KANABEC

At the corner location shown on the sketch:

FOUND THIS MONUMENT
AND ESTABLISHED G.P.S. COORDINATES ON ITS LOCATION.

Kanabec County U.S. Survey Feet Coordinates
NAD 1983, HARN 1996 Adjustment
Obtained by RTK GPS Observation

Northing= 197130.83

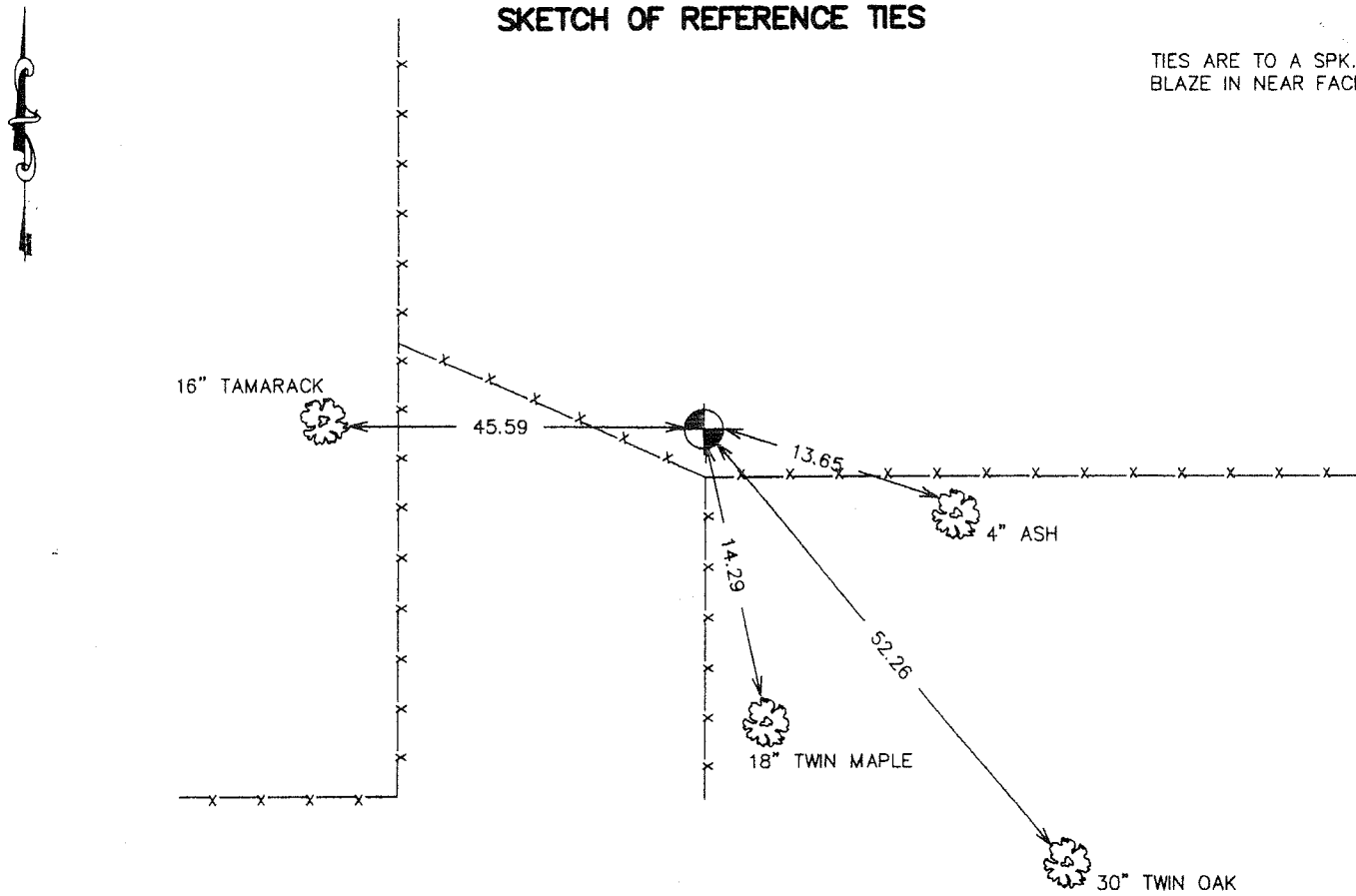
Easting= 431313.56

Note: NAD 1983, HARN 1996 Adjustment
coordinates are NOT compatible with
NAD 1983 coordinates

Note: 1 Meter=3937/1200 U.S. Survey Feet

SKETCH OF REFERENCE TIES

TIES ARE TO A SPK. IN
BLAZE IN NEAR FACE



Statement of evidence relative to this corner location is on back of page.

I hereby certify that this document and the data contained herein was prepared by me or under my direct supervision.

Ernest J. Reed
Signature

11-1-2006
Date

OFFICE OF THE COUNTY RECORDER

County of _____

I hereby certify that this document was filed in the County Recorder's office at _____ M. on the _____ day of _____ A.D., 20____

County Recorder _____

BY _____ Deputy

DOCUMENT NO. _____

Registration No. Minn No 9808

Land Surveyor, [] Professional Engineer

[] County Surveyor, [] County Engineer

NORTH QUARTER CORNER SECTION 31, T41, R22

STATEMENT OF EVIDENCE

ALL OF THE ORIGINAL GOVERNMENT BEARING TREES ARE NOW GONE.

JOHN BUCKLEY, A COUNTY SURVEYOR, MADE A SURVEY IN AUGUST OF 1919 FOR A TOWNSHIP ROAD IN SECTION 30, TOWNSHIP 41, RANGE 22, FILED IN TOWN ROAD ORDERS.

JOHN NELSON, THE KANABEC COUNTY SURVEYOR, MADE A SURVEY FOR A TOWN ROAD FROM THE WEST QUARTER CORNER OF SECTION 20, TOWNSHIP 41, RANGE 22, TO THE NORTHEAST CORNER OF SECTION 8, TOWNSHIP 41, RANGE 22, FILED IN SURVEYOR'S RECORD BOOK AT KANABEC COUNTY.

BUCKLEY'S SURVEY SHOWS A PLUS OF 587.1 FEET BETWEEN THE SOUTHEAST CORNER OF SECTION 31 AND THE EAST QUARTER CORNER OF SECTION 30. NELSON'S SURVEY SHOWS A MINUS OF 638.22 FEET BETWEEN THE SOUTHWEST CORNER OF SECTION 17 AND THE WEST QUARTER CORNER OF SECTION 17.

FROM THIS INFORMATION AND THE LINES OF OCCUPATION IN THIS AREA, IT APPEARS THE GOVERNMENT SURVEY BUSTED 10 CHAINS BETWEEN THE SOUTHEAST CORNER OF SECTION 30 AND THE NORTHEAST CORNER OF SECTION 30, AND THEY CORRECTED IT BETWEEN THE SOUTHWEST CORNER OF SECTION 17 AND THE WEST QUARTER CORNER OF SECTION 17. THIS IS BASED ON THE FOLLOWING ASSUMPTION:

THE GOVERNMENT SURVEY RUN WEST BETWEEN SECTIONS 19 AND 30 KNOWING THEY WOULD INTERSECT THE LAKE BEFORE THEY INTERSECTED THE TOWNSHIP LINE SO THEY DID NOT TIE INTO THE TOWNSHIP LINE AS STATED IN THEIR NOTES, BECAUSE THEY WOULD HAVE TO RE-RUN THE TOWNSHIP LINE BETWEEN THE MEANDER CORNERS TO MAKE THE INTERSECTION IN THE LAKE. THEY WERE NOT AWARE OF THE BUST UNTIL THEY RAN WEST TO THE TOWNSHIP LINE BETWEEN SECTIONS 18 AND 19. THEY NOW FOUND THE ERROR AND RATHER THAN GOING BACK AND MAKING THE CORRECTION THEY CORRECTED IT BY DROPPING 10 CHAINS BETWEEN THE SOUTHWEST AND WEST QUARTER CORNERS OF SECTION 17. THEREFORE, THE LINES AS RUN BY THE GOVERNMENT SURVEY AN OCCUPIED IN SECTIONS 19 AND 30, TOWNSHIP 41, RANGE 22, DO NOT LINE UP WITH THE LINES RUN BY THE GOVERNMENT SURVEY AND OCCUPIED IN SECTIONS 24 AND 25, TOWNSHIP 41, RANGE 23.

IN NOVEMBER OF 1995, M.B. RUDE MADE A SURVEY AROUND SECTION 31, TOWNSHIP 41, RANGE 22, TO LOCATE EXISTING MONUMENTS, LINES OF OCCUPATION AND TO ESTABLISH SEARCH AREAS.

BUCKLEY'S SURVEY FROM 1919 SHOWS HE PRORATED THE LINE BETWEEN THE EAST QUARTER CORNER OF SECTION 30, TOWNSHIP 41, RANGE 22 AND THE SOUTHEAST CORNER OF SECTION 31, TOWNSHIP 41, RANGE 22, AND THE FENCE LINE AT THE NORTHEAST CORNER OF SECTION 31, TOWNSHIP 41, RANGE 22, FITS HIS PRORATED CORNER LOCATION.

AT THE NORTH QUARTER CORNER OF SECTION 31, TOWNSHIP 41, RAN 22, THERE ARE TWO FENCE LINE LOCATIONS. WE MADE A SEARCH WITH A MAGNETIC LOCATOR AND BY PROBING WITH A MACHETTE. NO EVIDENCE OF THE CORNER WAS FOUND IN OUR SEARCH. WE SET THIS CORNER AT THE LOCATION OF THE NORTHEASERLY FENCE CORNER, OF THE TWO FENCE CORNER, BECAUSE IT FITS CLOSER TO THE LINE AD PROPORTIONAL MEASUREMENT BETWEEN THE NORTHWEST AND NORTHEAST CORNERS OF SECTION 31, TOWNSHIP 41, RANGE 22.

IN SEPTEMBER OF 2006 E.G. RUD AND SONS FOUND THIS MONUMENT AND ESTABLISHED KANABEC COUNTY COORDINATES ON IT USING G.P.S. EQUIPMENT.