

CERTIFICATE OF LOCATION OF GOVERNMENT CORNER

NORTH QUARTER Corner of Section 32, Township 41, Range 22, 4TH P.M.

STATE OF MINNESOTA, County of KANABEC

At the corner location shown on the sketch:

SET #7 REBAR WITH ALUMINUM CAP
AND ESTABLISHED KANABEC COUNTY COORDINATES ON ITS LOCATION.

Kanabec County U.S. Survey Feet Coordinates
NAD 1983, HARN 1996 Adjustment
Obtained by RTK GPS Observation

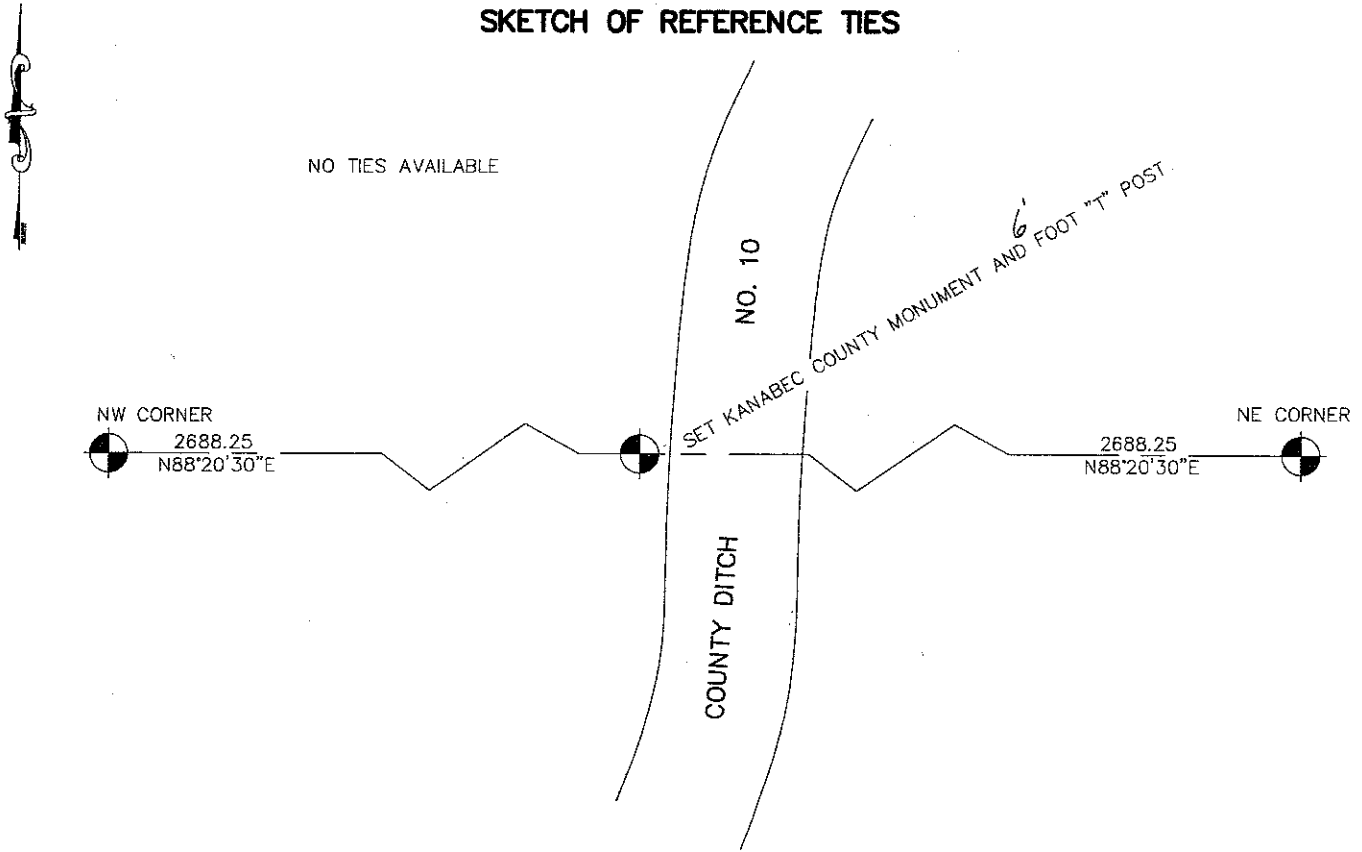
Northing= 197394.19

Easting= 436607.25

Note: NAD 1983, HARN 1996 Adjustment
coordinates are NOT compatible with
NAD 1983 coordinates

Note: 1 Meter=3937/1200 U.S. Survey Feet

SKETCH OF REFERENCE TIES



Statement of evidence relative to this corner location is on back of page.

I hereby certify that this document and the data contained herein was prepared by me or under my direct supervision.

Ernest J. Rud
Signature

11-25-07
Date

OFFICE OF THE COUNTY RECORDER

County of _____

I hereby certify that this document was filed in the County Recorder's office at _____ M. on the _____ day of _____ A.D., 20____

County Recorder _____

BY _____ Deputy

BY _____ Deputy

DOCUMENT NO. _____

Registration No. 9808

Land Surveyor, Professional Engineer

County Surveyor, County Engineer

NORTH QUARTER CORNER SECTION ~~32~~, T41, R22

32

STATEMENT OF EVIDENCE

THE ORIGINAL CORNER WAS SET BY DEPUTY SURVEYOR MR. BANKER ON OCTOBER 25, 1855 AND 2 BLACK ASH NOTED AS BEARING TREES. NO VISIBLE EVIDENCE REMAINS FOR THE CORNER OR BEARING TREES. THIS CORNER FALLS IN A LARGE SWAMP AND ON THE WEST BANK OF OF COUNTY DITCH NO. 10 WHICH RUNS NORTH-SOUTH.

NO SUBSEQUENT SURVEYS COULD BE FOUND AT KANABEC COUNTY OFFICES.

THE ORIGINAL MAP FOR COUNTY DITCH NO 10 WAS REVIEWED AND THIS MAP SHOWS A DISTANCE OF 92 FEET FROM THE CENTERLINE OF THE DITCH TO THE QUARTER CORNER. THIS IS THE SAME DISTANCE AS THE ORIGINAL GOVERNMENT NOTES INDICATED. THE DITCH MAP ALSO HAD STATIONING NOTED EVERY 500 FEET AND BY SCALING THE DISTANCE FROM THE SOUTH QUARTER CORNER TO THE NORTH QUARTER CORNER WAS 5750 FEET.

NO OCCUPATION LINES WERE FOUND WITHIN 200 FEET OF THIS CORNER.

THEREFORE THIS CORNER WAS SET BY LOST METHODS ON LINE AND EQUIDISTANT BETWEEN THE NORTHEAST AND NORTHWEST CORNERS OF SECTION 32. THIS PRODUCED A DISTANCE OF 5756 FEET ALONG THE NORTH-SOUTH QUARTER LINE.

A #7 REBAR 30" LONG WITH AN ALUMINUM CAP WAS SET A 6 FOOT FENCE POST DRIVEN ALONG SIDE KANABEC COUNTY COORDINATES WERE ESTABLISHED ON THE MONUMENT.