

# CERTIFICATE OF LOCATION OF GOVERNMENT CORNER

E 1/4 Corner of Section 31, Township 41, Range 22, 4<sup>TH</sup> P.M.

STATE OF MINNESOTA, County of KANABEC

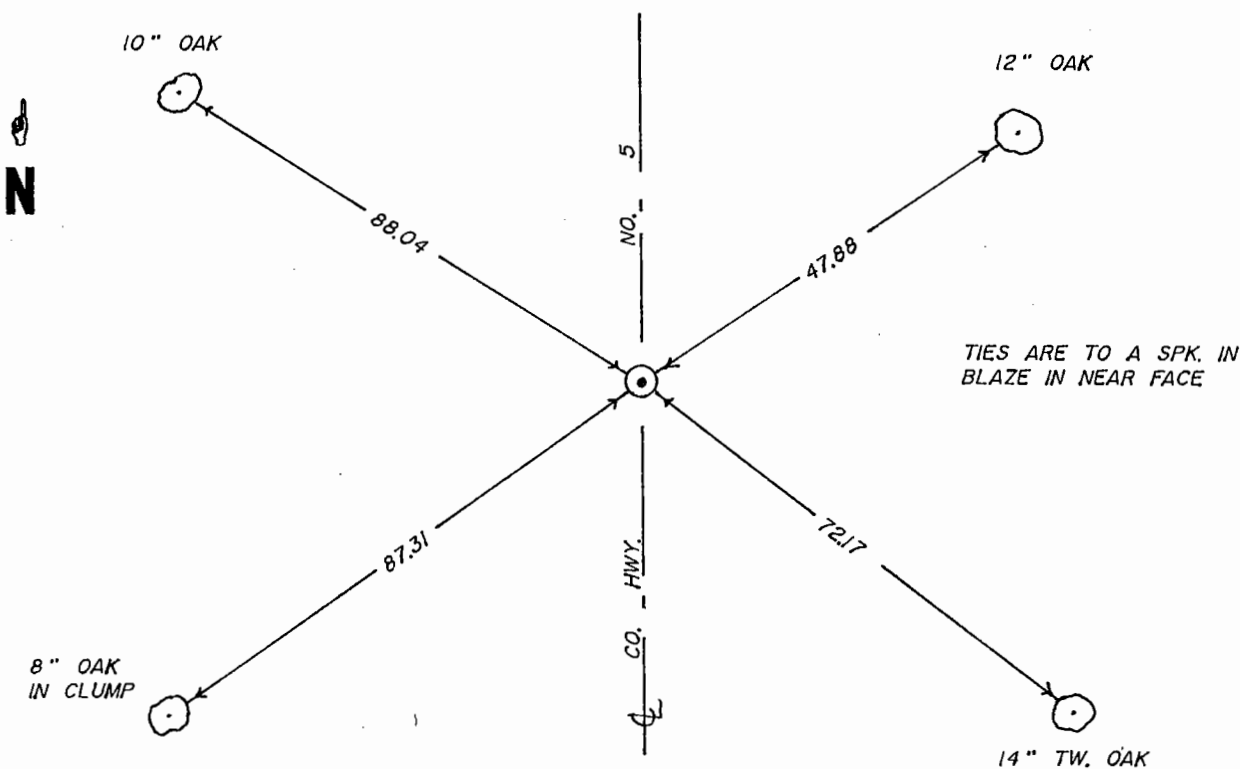
At the corner location shown on the sketch

On \_\_\_\_\_ found a \_\_\_\_\_  
Date

left monument as found,  lowered monument,  removed monument (explain)

On 11-5-96 placed a 7/8" x 24" CAPPED REBAR  
Date

## SKETCH OF REFERENCE TIES



Statement of evidence relative to this corner location is on back of page.

I hereby certify that this document and the data contained herein was prepared by me or under my direct supervision.

[Signature] 12-19-96  
Signature Date

Registration No. 8195

Land Surveyor,  Professional Engineer

County Surveyor,  County Engineer

## OFFICE OF THE COUNTY RECORDER

County of \_\_\_\_\_

I hereby certify that this document was filed in the County Recorder's office at \_\_\_\_\_ M. on the

\_\_\_\_\_ day of \_\_\_\_\_ A.D., 19\_\_\_\_

County Recorder \_\_\_\_\_

By \_\_\_\_\_ Deputy

DOCUMENT NO. \_\_\_\_\_

88/18

## STATEMENT OF EVIDENCE

All of the original government bearing trees are now gone.

John Buckley, a surveyor, made a survey in August of 1919 for a township road order setting a 6" by 9" by 13" sandstone marked with a cross.

See Attached History.

In November of 1995, we made a survey around Sections 30 and 31, Township 41, Range 22, to locate existing monuments, lines of occupation and establish search areas.

On May 22, 1996, we made a 4' by 10' by 12" excavation with a backhoe. No evidence of the corner was found in the excavation.

We set this corner on line and split between the southeast and northeast corners of Section 31.

This is in harmony with Buckley's Survey from 1919.

NOTES ON HISTORY OF SECTION CORNERS AND SECTION SUBDIVISION IN POMEROY LAKE AREA

John Buckley, a surveyor, made a survey in August of 1919 for a township road in Section 30, Township 41, Range 22, filed in town road orders.

John Nelson, the Kanabec County Surveyor, made a survey for a town road from the west quarter corner of Section 20, Township 41, Range 22, to the northeast corner of Section 8, Township 41, Range 22, filed in Surveyors Record Book at Kanabec County.

Buckley's survey shows a plus of 587.1 feet between the southeast corner of Section 31 and the east quarter corner of Section 30.

Nelson's survey shows a minus of 638.22 feet between the southwest corner of Section 17 and the west quarter corner of Section 17.

From this information and the lines of occupation in this area, it appears the government survey busted 10 chains between the southeast corner of Section 30 and the northeast corner of Section 30, and corrected it between the southwest corner of Section 17 and the west quarter corner of Section 17. This is based on the following assumptions:

The government survey run west between Sections 19 and 30 knowing they would intersect the lake before they intersected the township line so they did not tie into the township line, as stated in their notes. Because they would have to re-run the township line between the meander corners to make the intersection in the lake, they were not aware of the bust until they ran west to the township line between Sections 18 and 19. They now found the error and rather than going back and making the correction they corrected it by dropping 10 chains between the southwest and west quarter corners of Section 17. Therefore, the lines as run by the government survey and occupied in Sections 19 and 30, Township 41, Range 22, do not line up with the lines run by the government survey and occupied in Sections 24 and 25, Township 41, Range 23.