

CERTIFICATE OF LOCATION OF GOVERNMENT CORNER

E 1/4 Corner of Section 5, Township 41, Range 22, 4th P.M.

STATE OF MINNESOTA, County of KANABEC

At the corner location shown on the sketch:

found a capped #7 rebar

Kanabec County U.S. Survey Feet Coordinates
NAD 1983, HARN 1996 Adjustment
Obtained by RTK GPS Observation

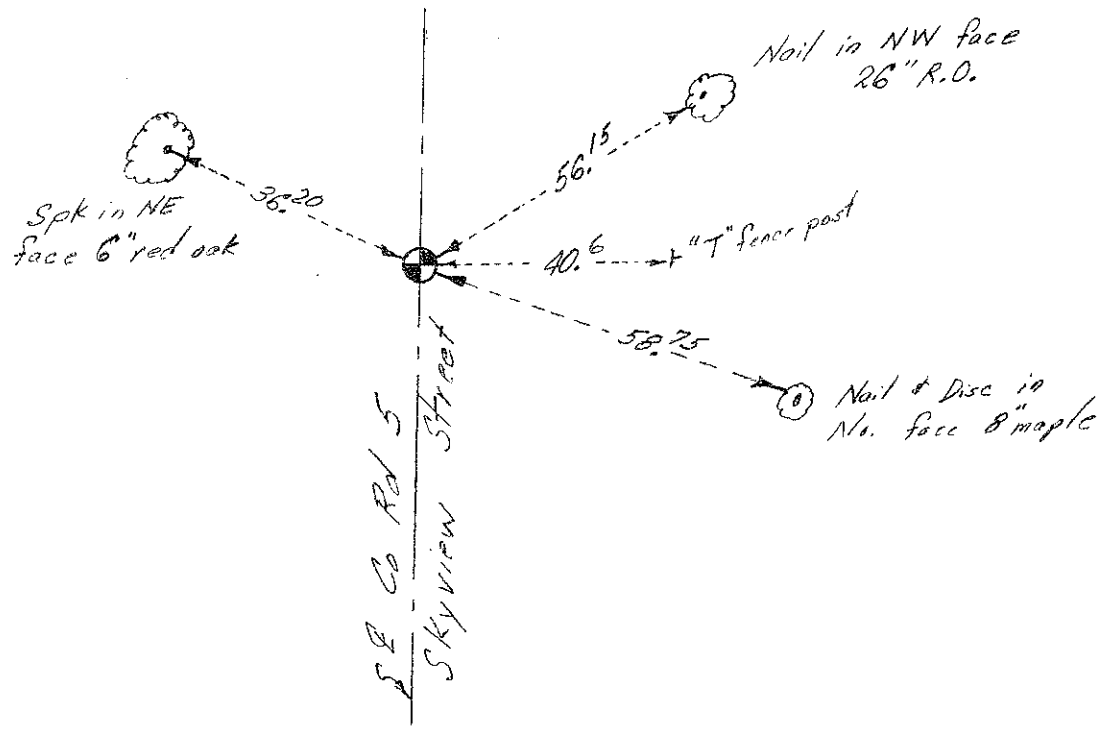
Northing= 220942.845

Easting= 439671.42

Note: NAD 1983, HARN 1996 Adjustment
coordinates are NOT compatible with
NAD 1983 coordinates

Note: 1 Meter=3937/1200 U.S. Survey Feet

SKETCH OF REFERENCE TIES



Statement of evidence relative to this corner location is on back of page.

I hereby certify that this document and the data contained herein was prepared by me or under my direct supervision.

Ernest J. Reed
Signature

7-18-2012
Date

Registration No. Minn No. 9808

- Land Surveyor, Professional Engineer
- County Surveyor, County Engineer

OFFICE OF THE COUNTY RECORDER

County of _____

I hereby certify that this document was filed in the County Recorder's office at _____ M. on the _____ day of _____ A.D., 20____

County Recorder _____

BY _____ Deputy

DOCUMENT NO. _____

STATEMENT OF EVIDENCE: EAST QUARTER 5-41-22 4122112

On November 6, 1855 Deputy Surveyor Isaac Banker set a post to mark this corner and reference ties were taken:

9" white birch bearing North 79 degrees 30 minutes East at 23 links
12" black ash bearing South 58 degrees East at 13 links

No visible evidence could be found for the original corner or accessories.

In 1903, former County Surveyor, John Nelson, made a road survey along the east line of Section 5 but did not state if he set a monument at this corner. Nelson measured 93.75 chains or 6187.5 feet from the Southeast to Northeast corner of Section 5.

On July 18, 2012, E.G. Rud & Sons ran a survey around Section 5 and the Northeast and Southeast corners being set previously. We measured 6189.24 feet along this line. We computed a lost position for this corner and at 8" below the gravel surface we found a #7 rebar with an aluminum cap. This fit within 0.40 feet of our position so we accepted this monument. No excavation was made as the road appears to be in a cut section at this location. Ties were taken and Kanabec County coordinates established on this monument.
