

CERTIFICATE OF LOCATION OF GOVERNMENT CORNER

North Quarter Corner of Section 9, Township 41 Range 22
4th Principal Meridian, Kanabec County, State of Minnesota

At the corner location shown on the sketch:

On 08/20/2021 Found a 7/8" Iron Rebar with Aluminum Cap.

Kanabec County U.S. Survey Feet Coordinates
NAD 1983, HARN 1996 Adjustment
Obtained by RTK GPS observation
Northing: 218501.7648
Easting: 442394.3390

Note: NAD 1983, HARN 1996 Adjustment coordinates are NOT compatible with NAD 1983 coordinates
Note: 1 Meter = 3937/1200 U.S. Survey Feet

SKETCH OF REFERENCE TIES

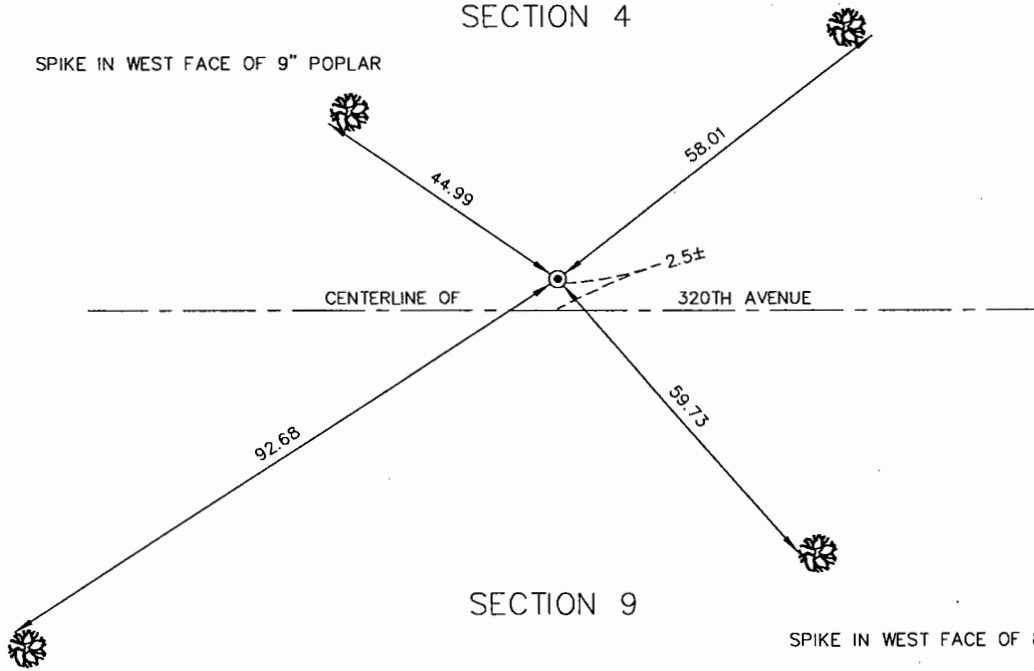
KROSCHÉL LAND SURVEYORS, INC.
ASSUMES NO LIABILITY FOR THE ACCURACY OF THE GPS COORDINATES SHOWN HEREON.
ALL COORDINATES AND DIMENSIONS SHOULD BE FIELD VERIFIED BY THE USER.



SPIKE IN EAST FACE OF 10" MAPLE

SECTION 4

SPIKE IN WEST FACE OF 9" POPLAR



CENTERLINE OF 320TH AVENUE

SECTION 9

SPIKE IN WEST FACE OF 8" POPLAR

SPIKE IN NW FACE OF 16" MAPLE

110/32

Statement of evidence relative to this corner location is on back of page.

I hereby certify that this report was prepared by me or under my direct supervision, that the United States public land survey monument record is correct and complete to the best of my knowledge and belief, and that I am a duly Licensed Land Surveyor under the laws of the State of Minnesota.

Tyler J. Kroschél, County Surveyor

2-6-2023

Date

License No. 44490

OFFICE OF THE COUNTY RECORDER

County of Kanabec

I hereby certify that this document was filed in the County Recorder's office at _____ M. on the _____ day of _____ A.D., 20____

County Recorder _____, Deputy

DOCUMENT NO. _____

Statement of Evidence:

In November of 1855, Deputy Surveyor Isaac Banker set a post to mark the North Quarter Corner of Section 9, Township 41 North, Range 22 West, 4th Principal Meridian.

Reference ties were taken to:

9 inch Sugar at South 16 degrees 45 minutes West a distance of 15 links
8 inch Aspen at North 4 degrees 15 minutes East a distance of 21 links

All of the original Government corner evidence was searched for. None was found.

1903- County Surveyor Jahn Nelson made a survey for a road along the north lines of Sections 9, 10, 11, and 12. Nelson shows a distance of 79.73 chains along the north line of Section 9. No information is given for the North Quarter corner of Section 9.

1982-Surveyor Terry Johnson, RLS 13115, made a survey in the Southeast Quarter of Section 4. Mr. Johnson's notes show he set an Iron Monument at the North Quarter corner of Section 9 using the centerline of the road and a proportional measurement between the NW and NE corners of Section 9. No corner certificate was filed.

2002-Surveyor John Rengo, RLS 25344, made a survey for Steve Westphal in the Northwest Quarter of Section 4 (Government Lots 3-6). Mr. Rengo's crew found a 1/2" x 16" Iron Rebar at the North Quarter corner of Section 9 which fit Terry Johnson's measurements very well. They replaced the found 1/2" Iron Rebar with a 7/8" x 24" Rebar Monument with Aluminum Cap and made new ties. No corner certificate was filed.

In August 2021, a survey was made around Section 9, Township 41 North, Range 22 West, 4th Principal Meridian for Larry Gebhart to locate existing monuments.

On 8/20/2021, I made a search with a metal locator and found the 7/8" Rebar Monument with Aluminum Cap per Mr. Rengo's field notes. Checked ties and assigned Kanabec County Coordinates.

The found Rebar was determined to be the best available evidence of the original corner monument location. I measure 2600.15 feet (GLO: 2631.75 feet) to the Northeast corner of Section 9. I measure 2598.89 feet (GLO: 2631.75 feet) to the Northwest corner of Section 9.

No excavation search was made at this location.