

CERTIFICATE OF LOCATION OF GOVERNMENT CORNER

NE Corner of Section 8, Township 41, Range 22, 4TH P.M.

STATE OF MINNESOTA, County of KANABEC

At the corner location shown on the sketch:

*found #7 capped rebar bent. Reset 1/2" x
14" capped iron pipe*

Kanabec County U.S. Survey Feet Coordinates
NAD 1983, HARN 1996 Adjustment
Obtained by RTK GPS Observation

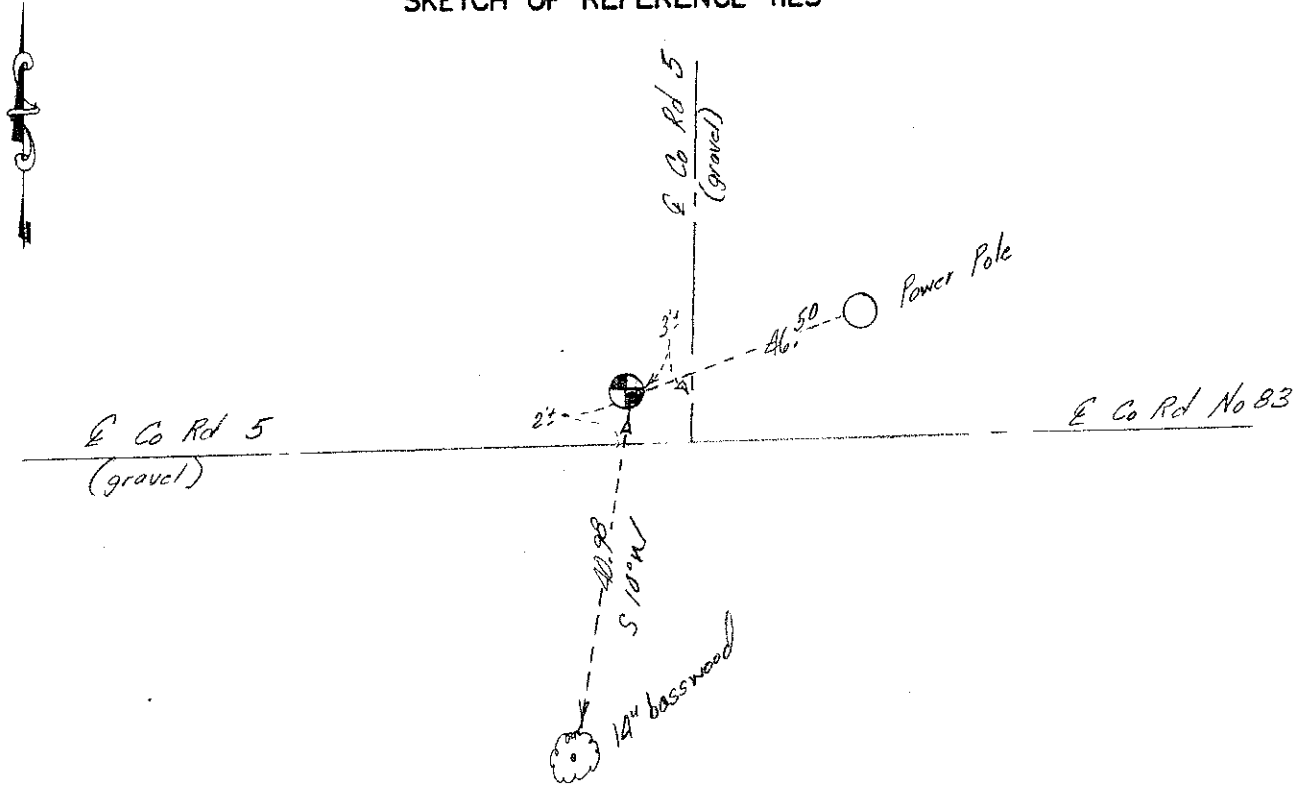
Northing= 218470.56

Easting= 439795.625

Note: NAD 1983, HARN 1996 Adjustment
coordinates are NOT compatible with
NAD 1983 coordinates

Note: 1 Meter=3937/1200 U.S. Survey Feet

SKETCH OF REFERENCE TIES



Statement of evidence relative to this corner location is on back of page.

I hereby certify that this document and the data contained herein was prepared by me or under my direct supervision.

Ernest J. Rud
Signature

7-18-2012
Date

Registration No. Minn No. 9808

- Land Surveyor, Professional Engineer
- County Surveyor, County Engineer

OFFICE OF THE COUNTY RECORDER

County of _____

I hereby certify that this document was filed in the County Recorder's office at _____ M. on the

_____ day of _____ A.D., 20__

County Recorder _____

BY _____ Deputy

DOCUMENT NO. _____

STATEMENT OF EVIDENCE: NORTHEAST Corner 8-41-22 4122110

All of the original government bearing trees are now gone.

In 1903, former County Surveyor, John Nelson, made two road surveys per the town road orders on file at the County Auditor's Office which call for the town roads to be laid out on the section line north and west from this corner.

In September of 1994, M.B. Rude made a survey along the north line of Section 8, Township 41, Range 22, to locate existing monuments, lines of occupation and establish search areas.

There are existing roads east-west and north at this corner. On September 12, 1994, he found a ½" by 18" rebar at this corner.

On September 29, 1994, he offset the found rebar and made a 2' by 15' by 15' excavation with a backhoe. No additional evidence was found in the excavation.

The location of the ½" by 18" rebar was accepted at the best available evidence of the perpetuated location of this corner.

On July 18, 2012, E.G. Rud & Sons found a #7 capped rebar at this location, verified reference ties and established Kanabec County coordinates on this position. The monument had been hit by a motor grader and was bent to the east. A ½" by 14' iron pipe was set at the base of the monument.
