

CERTIFICATE OF LOCATION OF GOVERNMENT CORNER

East Quarter Corner of Section 17, Township 41 North, Range 22 West,
4th Principal Meridian, Kanabec County, State of Minnesota

At the corner location shown on the sketch:

On 1/05/2012 set a 7/8" x 36" Rebar Monument with Aluminum Cap.

Kanabec County U.S. Survey Feet Coordinates
NAD 1983, HARN 1996 Adjustment
Obtained by RTK GPS observation
Northing: 210570.9380
Easting: 439701.1306

Note: NAD 1983, HARN 1996 Adjustment coordinates are NOT compatible with NAD 1983 coordinates

Note: 1 Meter = 3937/1200 U.S. Survey Feet

SKETCH OF REFERENCE TIES

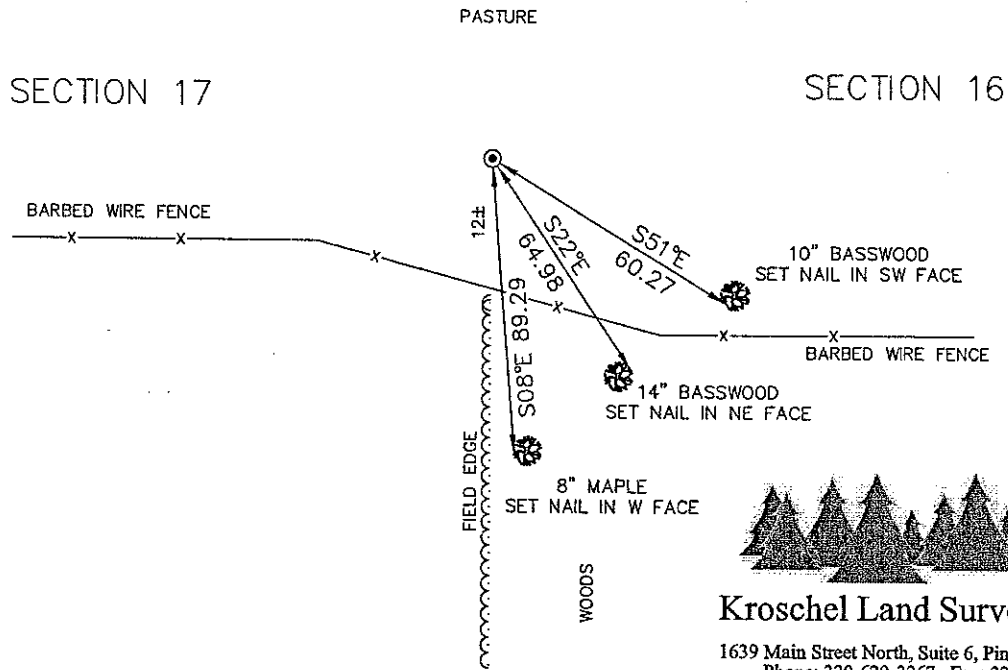
KROSCHEL LAND SURVEYORS, INC.
ASSUMES NO LIABILITY FOR THE ACCURACY OF THE GPS COORDINATES SHOWN HEREON. ALL COORDINATES AND DIMENSIONS SHOULD BE FIELD VERIFIED BY THE USER.

NOT TO SCALE

BEARINGS SHOWN TO REFERENCE TIES ARE MAGNETIC COMPASS BEARINGS
DISTANCE UNITS FOR THIS DRAWING IS U.S. SURVEY FEET

THE BASIS OF BEARINGS FOR THIS DRAWING IS THE KANABEC COUNTY COORDINATE SYSTEM BY MNDOT, NAD 1983, HARN 1996 ADJUSTMENT

111/76



Kroschel Land Surveyors, Inc.

1639 Main Street North, Suite 6, Pine City, MN 55063
Phone: 320-629-3267 Fax: 320-629-0176

Statement of evidence relative to this corner location is on back of page.

I hereby certify that this survey, plan, or report was prepared by me or under my direct supervision, that the United States public land survey monument record is correct and complete to the best of my knowledge and belief, and that I am a duly Licensed Land Surveyor under the laws of the State of Minnesota.

Tyler J. Kroschel
Tyler J. Kroschel

6-21-2012
Date

License No. 44490

Land Surveyor County Surveyor

OFFICE OF THE COUNTY RECORDER

County of Kanabec

I hereby certify that this document was filed in the County Recorder's office at _____ .M. on the _____ day of _____ A.D., 20____

County Recorder _____

By _____, Deputy

DOCUMENT NO. _____

Statement of Evidence:

In October of 1855, Deputy Surveyor Isaac Banker set a post to mark the East Quarter Corner of Section 17, Township 41 North, Range 22 West, 4th Principal Meridian.

Reference ties were taken to:

20 inch White Pine at South 80 degrees 30 minutes East a distance of 18 links
16 inch Sugar Maple at South 87 degrees 45 minutes West a distance of 45 links

All of the original Government corner evidence was searched for. None was found.

1901—A Township Supervisor's Road Order was filed in the Office of the County Auditor opening a Township road along the east line of Section 17. The road order gives no survey information. No road was ever built on this line.

1913—Chisago County Surveyor and Civil Engineer Henry Swenson made a survey and engineer's report for County Ditch No. 10. The ditch was petitioned to be placed upon a portion of the east-west center line of Section 17.

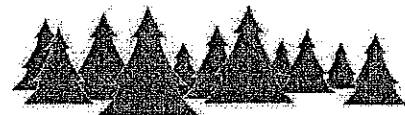
1914—A Township Supervisor's Road Order was filed in the Office of the County Auditor opening a Township road along the east line of Section 17. The road order states that no survey has yet been made as of 3/15/1914.

In January 2012, a survey was made around Section 17, Township 41 North, Range 22 West, 4th Principal Meridian for Cory Oslin to locate existing monuments, lines of occupation and establish search areas.

On 1/03/2012 a search was made by probing with machetes and checking with a magnetic locator. No evidence of corner was found.

I established this corner on line between the Northeast corner and the Southeast corner of Section 17 and on the easterly extension of the center of County Ditch No. 10. This location fits a lost position within 6.3 feet.

On 1/5/2012 I set a 7/8" x 36" Rebar Monument with Aluminum Cap, established reference ties and assigned Kanabec County Coordinates. This location was determined to be the best available evidence of the original government corner location.



Kroschel Land Surveyors, Inc.

1639 Main Street North, Suite 6, Pine City, MN 55063
Phone: 320-629-3267 Fax: 320-629-0176