

CERTIFICATE OF LOCATION OF GOVERNMENT CORNER

EAST QUARTER Corner of Section 29, Townshi.p 41, Range 22, 4TH P.M.

STATE OF MINNESOTA, County of KANABEC

At the corner location shown on the sketch:
FOUND THIS MONUMNET
AND ESTABLISHED G.P.S. COORDINATES ON ITS LOCATION.

Kanabec County U.S. Survey Feet Coordinates
NAD 1983, HARN 1996 Adjustment
Obtained by RTK GPS Observation

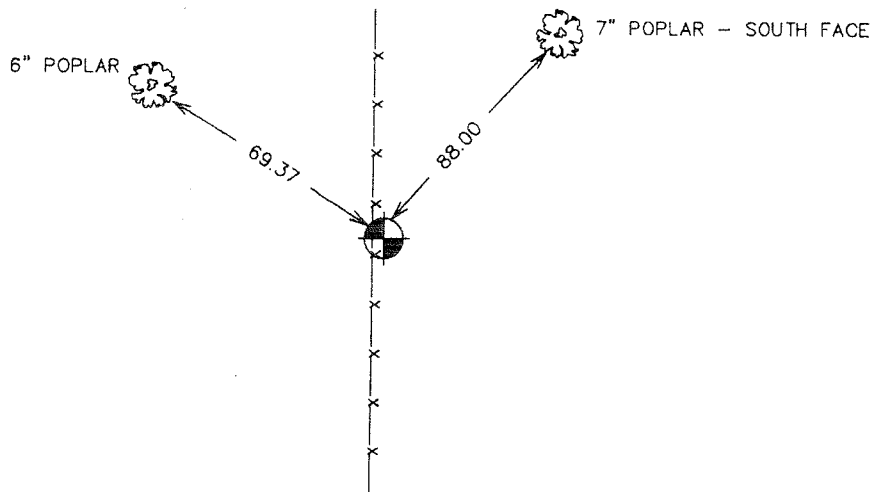
Northing= 200029.45

Easting= 439299.86

Note: NAD 1983, HARN 1996 Adjustment
coordinates are NOT compatible with
NAD 1983 coordinates

Note: 1 Meter=3937/1200 U.S. Survey Feet

SKETCH OF REFERENCE TIES



Statement of evidence relative to this corner location is on back of page.

I hereby certify that this document and the data contained herein was prepared by me or under my direct supervision.

[Signature] 11-1-2006
Signature Date

Registration No. Minn No 9808

Land Surveyor, Professional Engineer

County Surveyor, County Engineer

OFFICE OF THE COUNTY RECORDER

County of _____

I hereby certify that this document was filed in the County Recorder's office at _____ M. on the

_____ day of _____ A.D., 20____

County Recorder _____

BY _____ Deputy

DOCUMENT NO. _____

EAST QUARTER CORNER SECTION 29, T41, R22

STATEMENT OF EVIDENCE

SET BY SINGLE PROPORTIONAL MEASUREMENT BETWEEN NORTHEAST AND SOUTHEAST CORNERS OF SECTION 29. THIS FITS THE LOCATION USED BY HANDSCHU IN RESURVEY OF SECTION 29.

WE FOUND AN OLD POINTED WOODEN POST LYING DOWN AT THE LOCATION.

IN SEPTEMBER 2006 E.G. RUD RAN A SURVEY AROUND SECTION 29 AND FOUND THIS MONUMENT ON A FENCE LINE AND ESTABLISHED KANABEC COUNTY COORDINATES USING G.P.S. EQUIPMENT.