

# CERTIFICATE OF LOCATION OF GOVERNMENT CORNER

NORTHEAST Corner of Section 32, Township 41, Range 22, 4TH P.M.  
STATE OF MINNESOTA, County of KANABEC

At the corner location shown on the sketch:

RESET THIS CORNER  
AND ESTABLISHED G.P.S. COORDINATES ON ITS LOCATION.

Kanabec County U.S. Survey Feet Coordinates  
NAD 1983, HARN 1996 Adjustment  
Obtained by RTK GPS Observation

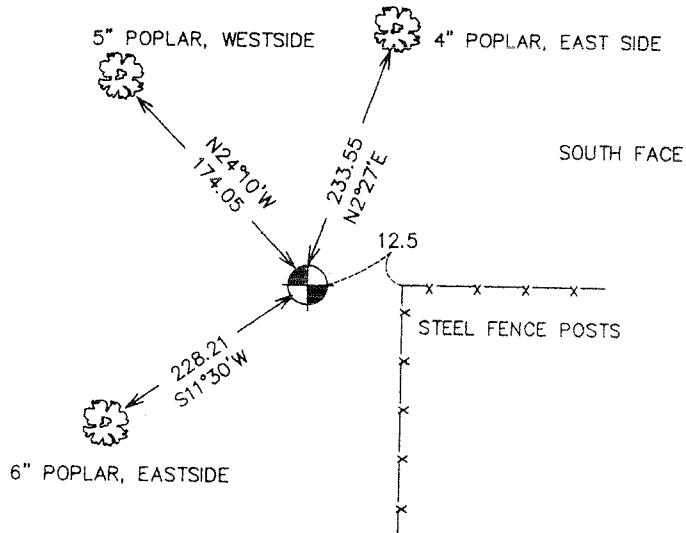
Northing= 197471.99

Easting= 439294.38

Note: NAD 1983, HARN 1996 Adjustment  
coordinates are NOT compatible with  
NAD 1983 coordinates

Note: 1 Meter=3937/1200 U.S. Survey Feet

## SKETCH OF REFERENCE TIES



Statement of evidence relative to this corner location is on back of page.

I hereby certify that this document and the data contained herein was prepared by me or under my direct supervision.

*Ernest J. Bud*  
Signature

11-1-2006  
Date

Registration No. Minn No 9808

Land Surveyor,  Professional Engineer

County Surveyor,  County Engineer

## OFFICE OF THE COUNTY RECORDER

County of \_\_\_\_\_

I hereby certify that this document was filed in the County Recorder's office at \_\_\_\_\_ M. on the

\_\_\_\_\_ day of \_\_\_\_\_ A.D., 20\_\_\_\_

County Recorder \_\_\_\_\_

BY \_\_\_\_\_ Deputy

DOCUMENT NO. \_\_\_\_\_

SOUTHEAST CORNER SECTION 29, T41, R22

**STATEMENT OF EVIDENCE**

M.B. RUDE FOUND 1" IRON PIPE IN SWAMP.

THIS LOCATION FITS THE TOPOGRAPHICAL CALLS FOR THE CORNER FROM THE ORIGINAL GOVERNMENT FIELD NOTES AND ALSO FITS THE DISTANCE PER SURVEY MADE BY HANDSCHU IN 1842 - PLUS OR MINUS.

IN SEPT. 2006 E.G. RUD AND SONS FOUND THIS 1" PIPE WHICH WAS RUSTED OFF. LARRY KNUDSON, OWNER OF NORTH HALF OF SECTION 33 TESTIFIED THAT MR. BLUM THE FORMER OWNER HAD SHOWN HIM THE ORIGINAL TAMARACK STAKE THAT WAS SET BY THE ORIGINAL GOVERNMENT SURVEYOR. ALONG SIDE THE 1" IRON WE FOUND A 4 1/2" DIAMETER POINTED STAKE WHICH WAS ROTTED OFF AT THE SURFACE. WE REPLACED THIS STAKE WITH A 4 FOOT IRON PIPE AND AN ALUMINUM CAP ON TOP.

KANABEC COUNTY COORDINATES WERE ESTABLISHED ON THIS CORNER USING G.P.S. EQUIPMENT.