

# CERTIFICATE OF LOCATION OF GOVERNMENT CORNER

EAST QUARTER Corner of Section 32, Township 41, Range 22, 4TH P.M.

STATE OF MINNESOTA, County of KANABEC

At the corner location shown on the sketch:

SET A #7 REBAR WITH AN ALUMINUM CAP AND ESTABLISHED G.P.S. COORDINATES ON ITS LOCATION.

Kanabec County U.S. Survey Feet Coordinates  
NAD 1983, HARN 1996 Adjustment  
Obtained by RTK GPS Observation

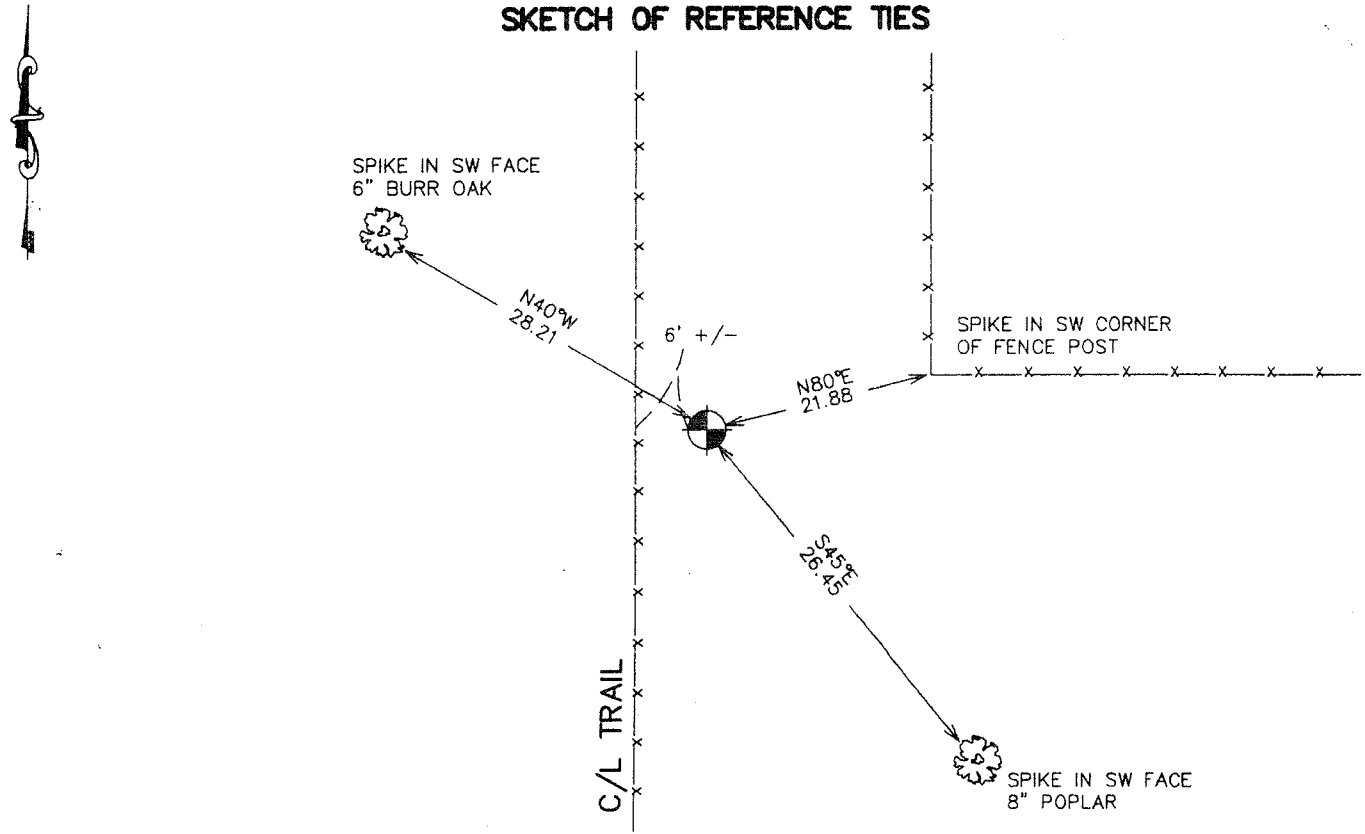
Northing= 194549.36

Easting= 439298.08

Note: NAD 1983, HARN 1996 Adjustment coordinates are NOT compatible with NAD 1983 coordinates

Note: 1 Meter=3937/1200 U.S. Survey Feet

### SKETCH OF REFERENCE TIES



Statement of evidence relative to this corner location is on back of page.

I hereby certify that this document and the data contained herein was prepared by me or under my direct supervision.

*Ernest Rud*  
Signature

11-1-2006  
Date

Registration No. Minn No 9808

Land Surveyor,  Professional Engineer

County Surveyor,  County Engineer

### OFFICE OF THE COUNTY RECORDER

County of \_\_\_\_\_

I hereby certify that this document was filed in the County Recorder's office at \_\_\_\_\_ M. on the \_\_\_\_\_ day of \_\_\_\_\_ A.D., 20 \_\_\_\_\_

County Recorder \_\_\_\_\_

BY \_\_\_\_\_ Deputy

DOCUMENT NO. \_\_\_\_\_

EAST QUARTER CORNER SECTION 32, T41; R22

**STATEMENT OF EVIDENCE**

IN SEPTEMBER OF 2006 E.G. RUD AND SONS RAN A SURVEY AROUND SECTION 29 TO LOCATE EXISTING MONUMENTATION AND LINES OF OCCUPATION. AN ORIGINAL TAMARACK STAKE WITH A 1" IRON PIPE WAS FOUND AT THE NORTHEAST CORNER AND A KANABEC COUNTY MONUMENT AT THE SOUTHEAST CORNER. AT THE LOCATION OF THE QUARTER CORNER WE FOUND A 1" IRON LAYING DOWN. THIS FIT WITHIN 0.9' FROM A LINE AND SPLIT BETWEEN THE NORTHEAST AND SOUTHEAST CORNER. THEREFORE WE SET A #7 REBAR WITH AN ALUMINUM CAP ON LINE AND EQUIDISTANT FROM THE NORTHEAST AND SOUTHEAST CORNER OF SECTION 32. KANABEC COUNTY COORDINATES WERE ESTABLISHED G.P.S. EQUIPMENT.