

CERTIFICATE OF LOCATION OF GOVERNMENT CORNER

Northeast Corner of Section 9, Township 41 Range 22
4th Principal Meridian, Kanabec County, State of Minnesota

At the corner location shown on the sketch:

On 08/20/2021 found a spike and replaced it with a 1/2" x 14" Iron Rebar with plastic cap marked KROSCHEL 44490.

Kanabec County U.S. Survey Feet Coordinates
NAD 1983, HARN 1996 Adjustment
Obtained by RTK GPS observation
Northing: 218504.1111
Easting: 444994.4912

Note: NAD 1983, HARN 1996 Adjustment coordinates are NOT compatible with NAD 1983 coordinates

Note: 1 Meter = 3937/1200 U.S. Survey Feet

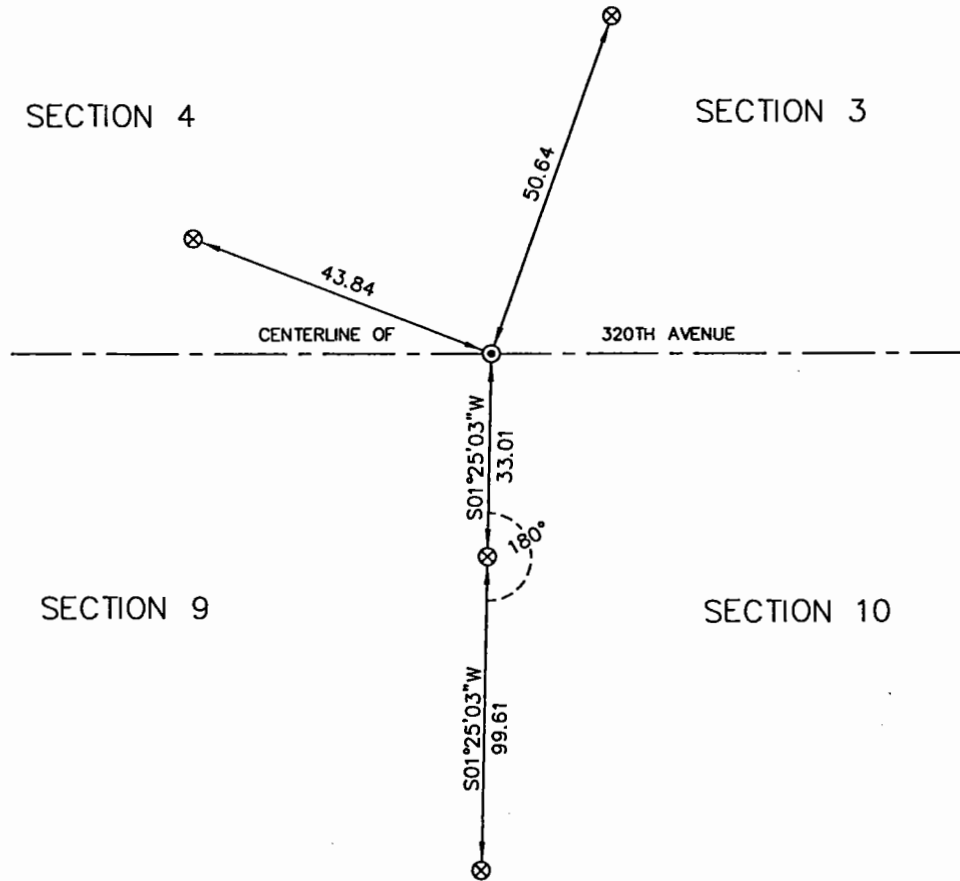
SKETCH OF REFERENCE TIES

NOT TO SCALE



THE BASIS OF BEARINGS FOR THIS DRAWING IS THE KANABEC COUNTY COORDINATE SYSTEM BY MNDOT, NAD 1983, HARN 1996 ADJUSTMENT

KROSCHEL LAND SURVEYORS, INC.
ASSUMES NO LIABILITY FOR THE ACCURACY OF THE GPS COORDINATES SHOWN HEREON.
ALL COORDINATES AND DIMENSIONS SHOULD BE FIELD VERIFIED BY THE USER.



Statement of evidence relative to this corner location is on back of page.

I hereby certify that this report was prepared by me or under my direct supervision, that the United States public land survey monument record is correct and complete to the best of my knowledge and belief, and that I am a duly Licensed Land Surveyor under the laws of the State of Minnesota.


Tyler J. Kroschel, County Surveyor

4/03/2023
Date

License No. 44490

OFFICE OF THE COUNTY RECORDER
County of Kanabec

I hereby certify that this document was filed in the County Recorder's office at _____ M. on the _____ day of _____ A.D., 20____

County Recorder _____, Deputy

DOCUMENT NO. _____

Statement of Evidence:

In November of 1855, Deputy Surveyor Isaac Banker set a post to mark the Northeast Corner of Section 9, Township 41 North, Range 22 West, 4th Principal Meridian.

Reference ties were taken to:

13 inch Black Ash at North 26 degrees 30 minutes East a distance of 34 links
9 inch White Birch at North 52 degrees 30 minutes West a distance of 11 links
7 inch White Birch at South 21 degrees 30 minutes West a distance of 15 links
7 inch White Birch at South 89 degrees East a distance of 18 links

All of the original Government corner evidence was searched for. None was found.

1903- County Surveyor John Nelson made a survey for a road along the north lines of Sections 9, 10, 11, and 12. Nelson shows a distance of 79.73 chains along the north line of Section 9 and a distance of 80.14 chains along the north line of Section 10. He does not state what type of monument was found/set at the Northeast corner of Section 9.

1982- Surveyor Terry Johnson, RLS 13115, made a survey in the Southeast Quarter of Section 4. Mr. Johnson's notes show he set an Iron Monument at the Southeast corner of Section 4 using the centerline of the road and a fence line north. No corner certificate was filed.

2002- Surveyor John Rengo, RLS 25344, made a survey for Steve Westphal in the Northwest Quarter of Section 4 (Government Lots 3-6). Mr. Rengo's crew found a Spike at the Southeast corner of Section 4. No corner certificate was filed.

In August 2021, a survey was made around Section 9, Township 41 North, Range 22 West, 4th Principal Meridian for Larry Gebhart to locate existing monuments.

On 8/20/2021, I made a search with a metal locator and found the Spike per Mr. Rengo's field notes. I removed it and set a 1/2" x 14" Rebar marked KROSCHER 44490 in its place. Established reference ties and assigned Kanabec County Coordinates.

The found Spike was determined to be the best available evidence of the original corner monument location. I measure 5198.96 feet (Nelson: 5262.18 feet) to the Northwest corner of Section 9. I measure 5142.66 feet (Nelson: 5289.24 feet) to the Northeast corner of Section 10.

No excavation search was made at this location.