

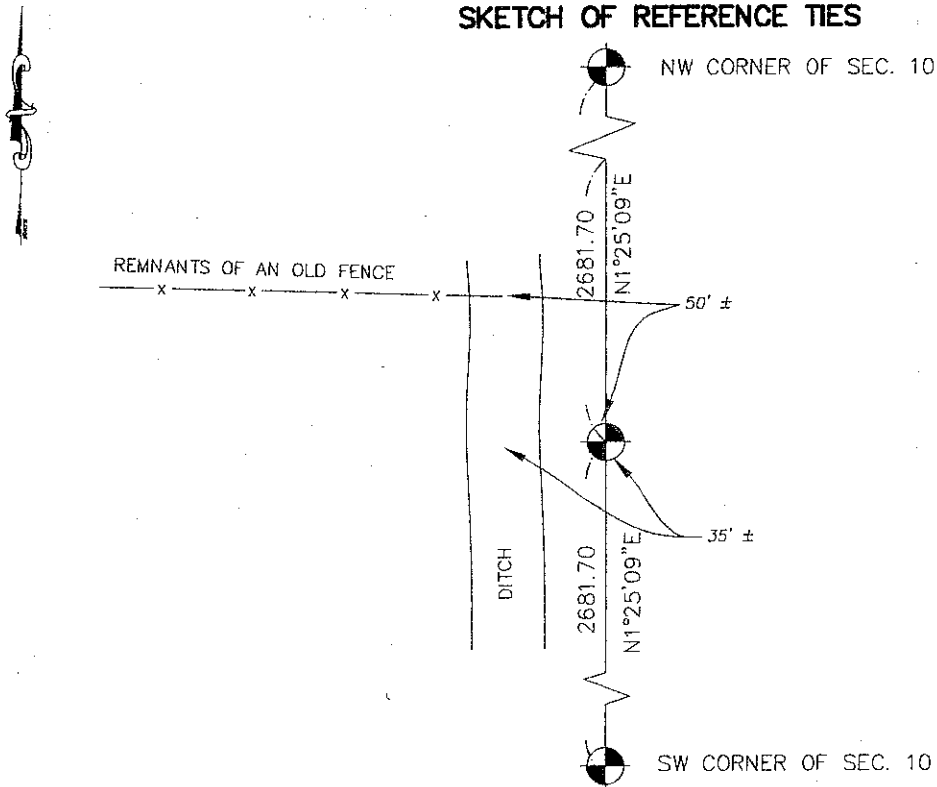
CERTIFICATE OF LOCATION OF GOVERNMENT CORNER

 EAST QUARTER Corner of Section 9 , Township 41 , Range 22 , 4TH P.M.
 STATE OF MINNESOTA, County of KANABEC

At the corner location shown on the sketch:
 SET MONUMENT
 AND ESTABLISHED G.P.S. COORDINATES ON ITS LOCATION.

Kanabec County U.S. Survey Feet Coordinates
 NAD 1983, HARN 1996 Adjustment
 Obtained by RTK GPS Observation
 Northing= 215823.22
 Easting= 444928.15
 Note: NAD 1983, HARN 1996 Adjustment
 coordinates are NOT compatible with
 NAD 1983 coordinates
 Note: 1 Meter=3937/1200 U.S. Survey Feet

SKETCH OF REFERENCE TIES



Statement of evidence relative to this corner location is on back of page.

I hereby certify that this document and the data contained herein was prepared by me or under my direct supervision.

Ernest J. Rud
 Signature

3-17-2009
 Date

Registration No. 9808

- Land Surveyor, Professional Engineer
 County Surveyor, County Engineer

OFFICE OF THE COUNTY RECORDER

County of _____
 I hereby certify that this document was filed in the County Recorder's office at _____ M. on the _____ day of _____ A.D., 20____

County Recorder _____
 BY _____ Deputy

DOCUMENT NO. _____

EAST 1/4 CORNER SECTION 9, T41, R22

STATEMENT OF EVIDENCE

THE ORIGINAL CORNER WAS SET IN OCTOBER 1855 BY GOVERNMENT SURVEYOR ISAAC BANKER. EVIDENCE FOR THE CORNER OR BEARING TREES NO LONGER REMAIN. THERE IS NO RECORDS OF SUBSEQUENT SURVEYORS AT THE KANABEC COUNTY OFFICES. IN JANUARY 2006 E.G. RUD RAN A SURVEY AROUND SECTION 10 AND 15 TO TIE IN EXISTING MONUMENTS AND LINES OF OCCUPATION. A MONUMENT WAS SET AT SINGLE PROPORTIONATE MEASUREMENT BETWEEN THE NW AND SW CORNERS OF SECTION 10. TIES WERE TAKEN AND KANABEC COUNTY COORDINATES ESTABLISHED ON THIS POSITION.

IN MAY 2008 A NEW POSITION WAS COMPUTED FOR THIS CORNER AS THE SW CORNER OF SEC. 10 WAS RESET DUE TO NEW EVIDENCE FROM FURTHER RESEARCH. NEW COORDINATES WERE COMPUTED AND NEW CERTIFICATE FILED BUT THE MONUMENT COULD NOT BE RESET DUE TO HIGH WATER CONDITIONS. THIS WILL BE DONE IN FALL OF 2008.