

# CERTIFICATE OF LOCATION OF GOVERNMENT CORNER

NORTHEAST Corner of Section 16, Township 41, Range 22, 4TH P.M.

STATE OF MINNESOTA, County of KANABEC

At the corner location shown on the sketch:  
 SET KANABEC COUNTY MONUMENT  
 AND ESTABLISHED G.P.S. COORDINATES ON ITS LOCATION.

Kanabec County U.S. Survey Feet Coordinates  
 NAD 1983, HARN 1996 Adjustment  
 Obtained by RTK GPS Observation

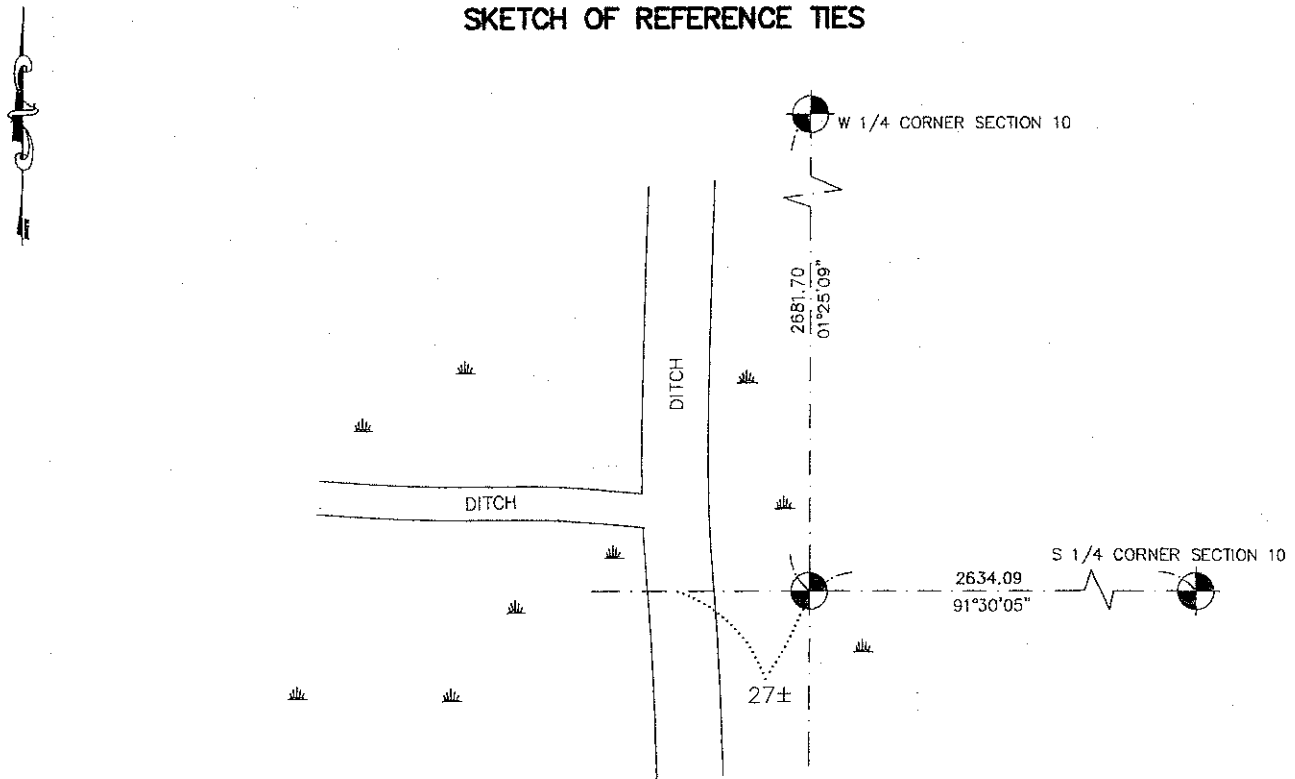
Northing= 213142.35

Easting= 444861.73

Note: NAD 1983, HARN 1996 Adjustment  
 coordinates are NOT compatible with  
 NAD 1983 coordinates

Note: 1 Meter=3937/1200 U.S. Survey Feet

### SKETCH OF REFERENCE TIES



Statement of evidence relative to this corner location is on back of page.

I hereby certify that this document and the data contained herein was prepared by me or under my direct supervision.

Ernest [Signature]  
 Signature

3-17-2009  
 Date

Registration No. Minn No. 9808

- Land Surveyor,     Professional Engineer  
 County Surveyor,     County Engineer

### OFFICE OF THE COUNTY RECORDER

County of \_\_\_\_\_

I hereby certify that this document was filed in the County Recorder's office at \_\_\_\_\_ M. on the \_\_\_\_\_ day of \_\_\_\_\_ A.D., 20\_\_\_\_

County Recorder \_\_\_\_\_

BY \_\_\_\_\_ Deputy

DOCUMENT NO. \_\_\_\_\_

## NE CORNER SECTION 16, T41, R22

### STATEMENT OF EVIDENCE

THE ORIGINAL CORNER WAS SET IN OCTOBER 1855 BY GOVERNMENT SURVEYOR ISAAC BANKER. EVIDENCE FOR THE CORNER OR BEARING TREES NO LONGER REMAIN. IN 1903 JOHN NELSON DID A ROAD SURVEY ALONG THE SOUTH LINE OF SECTION 10. HIS NOTES DON'T INDICATE IF MONUMENTS WERE SET OR NOT. HE RECORDED THE SOUTH LINE OF SECTION 10 TO BE 79.66 CHAINS OR 5257.56 FEET. IN JANUARY 2006 E.G. RUD RAN A SURVEY AROUND SECTIONS 10 AND 15 TO LOCATE LINES OF OCCUPATION AND EXISTING MONUMENTATION. THE NORTHEAST CORNER OF SECTION 16 WAS SET BY DOUBLE PROPORTIONATE MEASUREMENT FROM THE SOUTHWEST CORNER OF SECTION 15 TO THE NORTHWEST CORNER OF SECTION 10 AND FROM THE SOUTHWEST CORNER OF SECTION 8 TO THE SOUTHEAST CORNER OF SECTION 15. THIS GAVE THE SOUTH LINE OF SECTION 10 A DISTANCE OF 5322.8 FEET OR ABOUT 1 CHAIN LONGER THAN JOHN NELSON. THIS CORNER FALLS IN A LARGE SWAMP. A KANABEC COUNTY MONUMENT WAS SET AND COUNTY COORDINATES ESTABLISHED ON IT.

IN MAY 2008 WHILE DOING RESEARCH FOR W 1/4 OF SEC 15 E.G. RUD AND SONS FOUND AN OLD DITCH MAP AT THE COUNTY ENGINEERS OFFICE FOR COUNTY DITCH NO 10 WHICH RUNS ALONG WEST LINE OF SECTION 15. THIS MAP SHOWS THE DITCH TO BE ON THE WEST SIDE OF THE SECTION LINE BY 33 FEET. SAM DeLEO FOUND A SANDSTONE AT THE W 1/4 CORNER OF SECTION 15 THAT WAS 33 FEET EAST OF THE CENTERLINE OF THE DITCH. THIS SANDSTONE WAS ACCEPTED AS THE LOCATION FOR THE W 1/4 CORNER OF SEC. 15. FURTHER RESEARCH DISCOVERED THAT TERRY JOHNSON HAD DONE A SURVEY IN THE SW 1/4 OF SEC. 15 IN 1985. HIS SURVEY SHOWED A DISTANCE OF 2634.09 FEET FROM THE NE CORNER OF SEC. 15 TO THE N 1/4. THEREFOR E.G. RUD AND SONS MOVED THE LOCATION OF THE N 1/4 CORNER TO FIT THIS DIMENSION. BY DOUBLING OVER THIS DISTANCE TO THE NW CORNER PUT THE NW CORNER ON THE EAST SIDE OF THE DITCH AND COMES WITHIN 10 FEET OF JOHN NELSON SURVEY.

A NEW MONUMENT COULD NOT BE SET DUE TO HIGH WATER CONDITIONS BUT WILL BE RESET IN FALL OF 2008. NEW KANABEC COUNTY COORDINATES WERE COMPUTED FOR THIS POSITION AND A REVISED CERTIFICATE FILED.