

# CERTIFICATE OF LOCATION OF GOVERNMENT CORNER

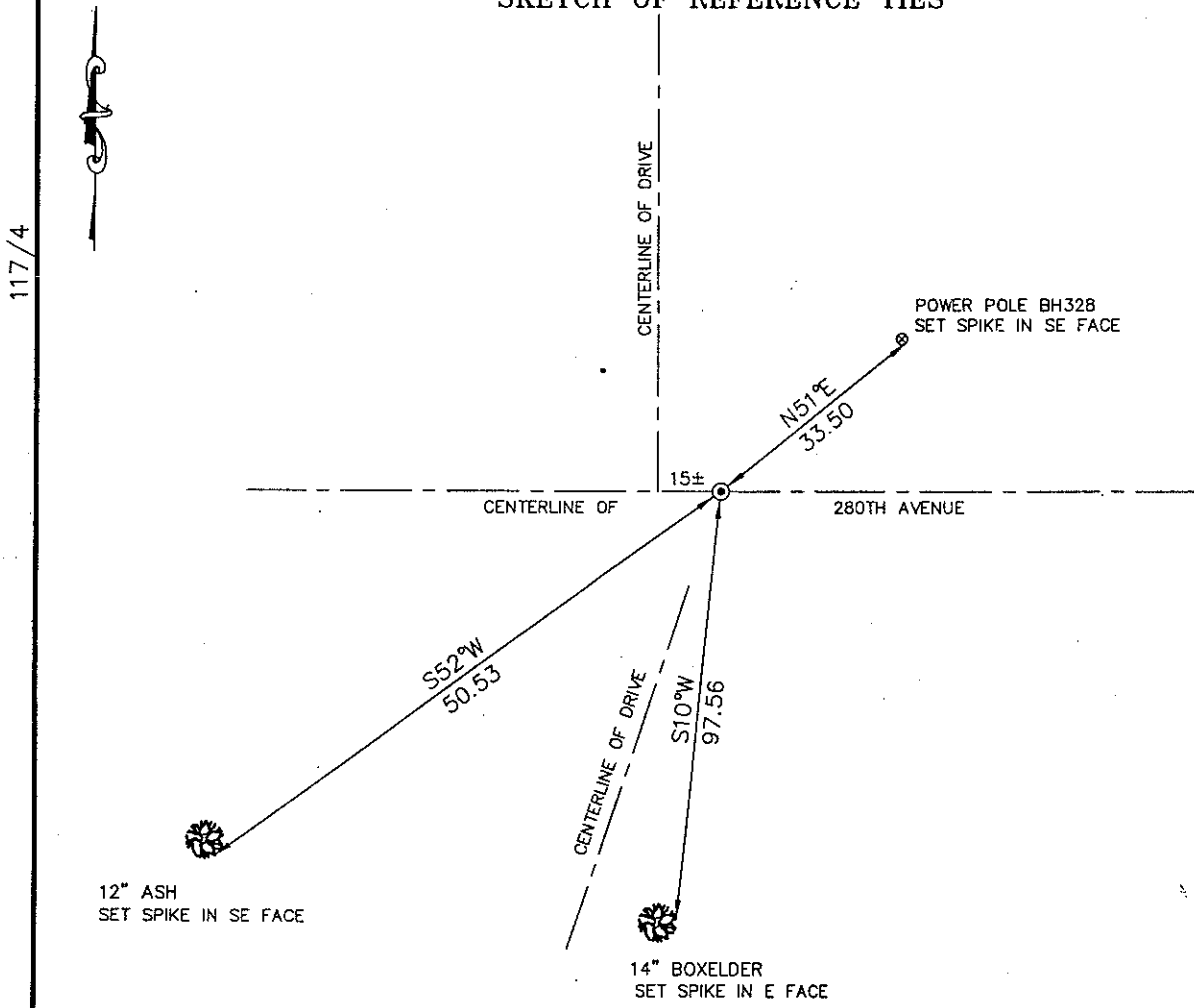
N1/4 Corner of Section 34, Township 41, Range 22,  
4th Principal Meridian, Kanabec County, State of Minnesota

At the corner location shown on the sketch:  
On 10/17/2007 Placed a 7/8" X 24" CAPPED  
REBAR Monument.

Kanabec County U.S. Survey Feet Coordinates  
NAD 1983, HARN 1996 Adjustment  
Obtained by RTK GPS observation  
Northing: 196970.7012  
Easting: 447343.5099

Note: NAD 1983, HARN 1996 Adjustment  
coordinates are NOT compatible with  
NAD 1983 coordinates  
Note: 1 Meter = 3937/1200 U.S. Survey Feet

## SKETCH OF REFERENCE TIES



Statement of evidence relative to this corner location is on back of page.

I hereby certify that this document and the data contained herein was prepared by me or under my direct supervision.

Tyler J. Kroschel  
Tyler J. Kroschel

11-14-07  
Date

License No. 44490

- Land Surveyor       Professional Engineer  
 County Surveyor       County Engineer

**OFFICE OF THE COUNTY RECORDER**  
County of Kanabec

I hereby certify that this document was filed in the County Recorders office at \_\_\_\_\_ .M. on the \_\_\_\_\_ day of \_\_\_\_\_ A.D., 20\_\_\_\_

County Recorder \_\_\_\_\_  
By \_\_\_\_\_, Deputy

DOCUMENT NO. \_\_\_\_\_

Statement of Evidence:

In October of 1855, Deputy Surveyor Isaac A. Banker set a post to mark the North Quarter Corner of Section 34, Township 41 North, Range 22 West, 4th Principal Meridian.

Reference ties were taken to:

16 inch ASPEN at North 32 degrees West a distance of 7 links

12 inch ASPEN at South 24 degrees 45 minutes East a distance of 17 links

All of the original Government corner evidence was searched for. None was found.

On March 14, 1913, a Town Road Order was filed in the Office of the County Auditor opening a road along the North line of Section 34.

In September 2007, a survey was made along the North line of Section 34, Township 41 North, Range 22 West, 4th Principal Meridian for Sue Boyd to locate existing monuments, lines of occupation, and establish search areas.

On 10/4/2007 we made a 15' x 30' x 2' deep excavation at the centerline of the township road and halfway between the Northeast and Northwest Corners of Section 34. No evidence was found in the excavation.

On 10/17/2007 we set a 7/8" x 24" CAPPED REBAR Monument at the North Quarter Corner of Section 34 at the center line of the township road and at proportional distance between the Northeast and Northwest Corners. Established reference ties and assigned Kanabec County Coordinates.