

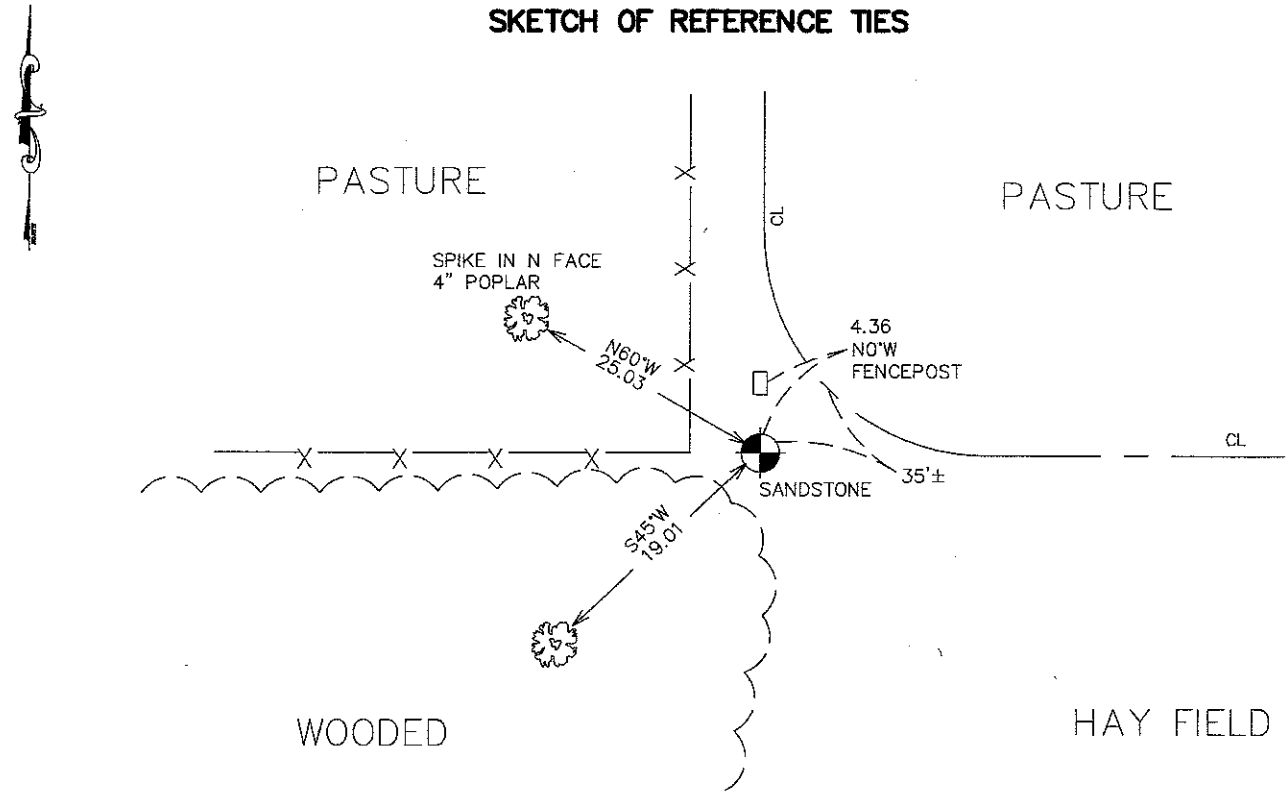
# CERTIFICATE OF LOCATION OF GOVERNMENT CORNER

NORTHEAST Corner of Section 33, Township 41, Range 22, 4TH P.M.  
 STATE OF MINNESOTA, County of KANABEC

At the corner location shown on the sketch:  
 FOUND SANDSTONE MONUMENT WITH X  
 AND ESTABLISHED KANABEC COUNTY COORDINATES ON ITS LOCATION.

Kanabec County U.S. Survey Feet Coordinates  
 NAD 1983, HARN 1996 Adjustment  
 Obtained by RTK GPS Observation  
 Northing= 197010.82  
 Easting= 444705.01  
 Note: NAD 1983, HARN 1996 Adjustment  
 coordinates are NOT compatible with  
 NAD 1983 coordinates  
 Note: 1 Meter=3937/1200 U.S. Survey Feet

### SKETCH OF REFERENCE TIES



Statement of evidence relative to this corner location is on back of page.

I hereby certify that this document and the data contained herein was prepared by me or under my direct supervision.

Ernest J. Reed 8-15-2007  
Signature Date

Registration No. Minn No 9808

Land Surveyor,  Professional Engineer  
 County Surveyor,  County Engineer

### OFFICE OF THE COUNTY RECORDER

County of \_\_\_\_\_

I hereby certify that this document was filed in the County Recorder's office at \_\_\_\_\_ M. on the \_\_\_\_\_ day of \_\_\_\_\_ A.D., 20\_\_\_\_

\_\_\_\_\_ day of \_\_\_\_\_ A.D., 20\_\_\_\_

County Recorder \_\_\_\_\_

BY \_\_\_\_\_ Deputy

DOCUMENT NO. \_\_\_\_\_

NORTHEAST CORNER SECTION 33, T41, R22

**STATEMENT OF EVIDENCE**

THE ORIGINAL CORNER WAS SET ON OCTOBER 31, 1855 BY DEPUTY SURVEYOR ISAAC BANKER AND FOUR BEARING TREES WERE IDENTIFIED. NO VISIBLE EVIDENCE FOR THE CORNER OR BEARING TREES REMAIN.

THIS CORNER FALLS AT THE INTERSECTION OF THE CENTERLINES OF A ROAD RUNNING NORTH AND A ROAD RUNNING EAST. THERE IS A ROAD OPENING ON FILE AT KANABEC COUNTY AUDITORS OFFICE FOR A ROAD ALONG THE EAST AND SOUTH LINES OF SECTION 28. NO RECORD OF SURVEY COULD BE FOUND.

IN 1960 THE KNUDSONS WHO OWN THE LAND IN SECTIONS 21, 27, 28, 33 AND 34, HAD HAD PROPERTY SURVEYED IN SECTION 28 BY G.E. MILNER REG NO. 1476. A COPY OF THIS SURVEY WAS FURNISHED AND THE SURVEY SHOWS A STONE MONUMENT WITH AN X WAS FOUND AT THIS CORNER.

IN JULY 2006 E.G. RUD AND SONS RAN A SURVEY IN POMROY TOWNSHIP FOR CONTROL ON COUNTY ROAD 5. THIS WAS TO LOCATE EXISTING MONUMENTS, LINES OF OCCUPATION AND SEARCH AREAS. ON SEPTEMBER 26, 2006 WITH THE HELP OF LARRY AND ROY KNUDSON WE HAD DUG FOR THE CORNER. AT THE APPROXIMATE INTERSECTION OF THE CENTERLINES OF THE TWO ROADS AT A DEPTH OF 8" A SANDSTONE MONUMENT WITH AN X WAS FOUND. WE ACCEPTED THE STONE AS BEING THE BEST EVIDENCE FOR THE PERPETUATION OF THIS CORNER. TIES WERE TAKEN AND KANABEC COUNTY COORDINATES WERE ESTABLISHED USING G.P.S. EQUIPMENT.