

CERTIFICATE OF LOCATION OF GOVERNMENT CORNER

E1/4 Corner of Section 3, Township 41, Range 22,
4th Principal Meridian, Kanabec County, State of Minnesota

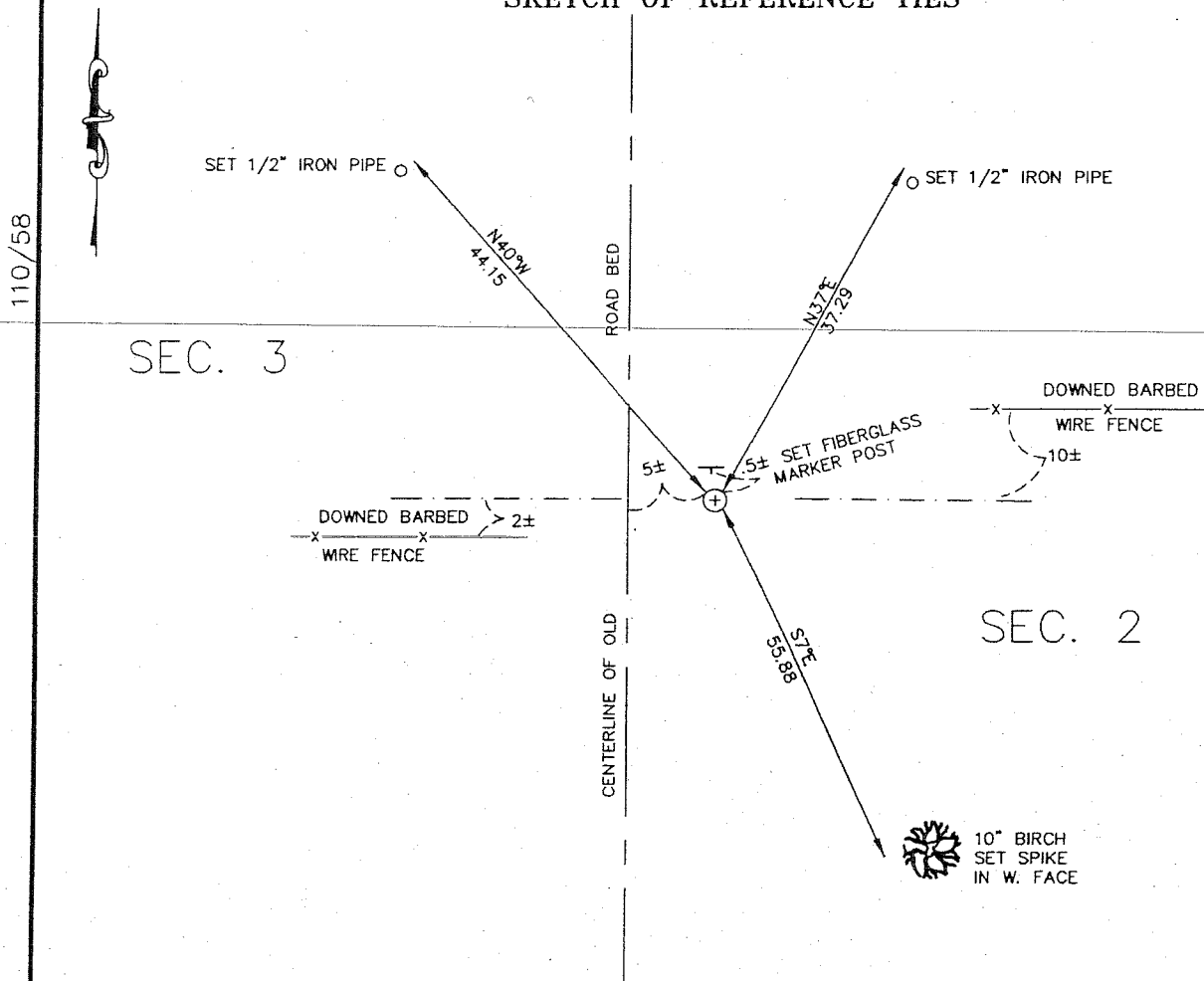
At the corner location shown on the sketch:
On 14/09/2005 Set a 7/8" X 36" CAPPED REBAR
Monument in place of a found 8" X 14" X 24"
sandstone with a cross mark at the E 1/4 Corner
of Sec. 3, T. 41, R. 22.

Kanabec County U.S. Survey Feet Coordinates
NAD 1983, HARN 1996 Adjustment
Obtained by RTK GPS observation
Northing: 220773.52
Easting: 450098.94

Note: NAD 1983, HARN 1996 Adjustment
coordinates are NOT compatible with
NAD 1983 coordinates

Note: 1 Meter = 3937/1200 U.S. Survey Feet

SKETCH OF REFERENCE TIES



Statement of evidence relative to this corner location is on back of page.

I hereby certify that this document and
the data contained herein was prepared
by me or under my direct supervision.

M. B. Reilly 11-17-05
Signature Date

License No. 8195

- Land Surveyor Professional Engineer
 County Surveyor County Engineer

OFFICE OF THE COUNTY RECORDER

County of Kanabec

I hereby certify that this document was filed in the
County Recorders office at _____ .M. on the
_____ day of _____ A.D., 20_____

County Recorder _____

By _____, Deputy

DOCUMENT NO. _____

Statement of Evidence:

All the original bearing trees are now gone.

There is no resurvey information available at the Kanabec County Courthouse & Highway Department Office for this Corner.

In August of 2005, a survey was made around Sec. 3, T. 41, R. 22 for Michael and Michelle Hendershott to locate existing Monuments, lines of occupation and to establish search areas.

On September 14, 2005, two 12' x 15' x 2 1/2' deep excavations were made, one at the intersection of an old road bed and a proportional measurement between the Northeast and Southeast Corners of Sec. 3, T. 41, R.22, and one at the intersection of an old road bed and two fence lines East and West. At .5±' below the surface of the old road bed we found an 8" x 14" x 24" SANDSTONE with an "X" mark. We removed the SANDSTONE and placed a 7/8" x 36" CAPPED REBAR in its place. The origin of the SANDSTONE is unknown. Established reference ties and assigned Kanabec County Coordinates.