

CERTIFICATE OF LOCATION OF GOVERNMENT CORNER

E 1/4 Corner of Section 11, Township 41, Range 22, 4TH P.M.
STATE OF MINNESOTA, County of KANABEC

At the corner location shown on the sketch:

Set a 1/2 inch iron pipe with cap. Equidistant from NE & SE corner of Sec 11 & on E of road.

Kanabec County U.S. Survey Feet Coordinates
NAD 1983, HARN 1996 Adjustment
Obtained by RTK GPS Observation

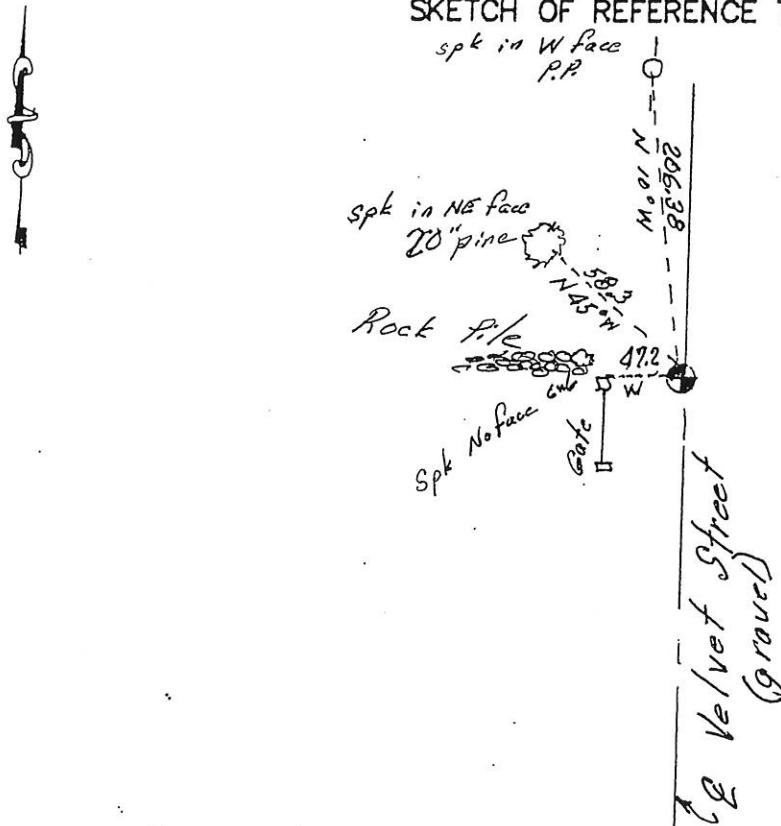
Northing= 215472.43

Easting= 455312.89

Note: NAD 1983, HARN 1996 Adjustment coordinates are NOT compatible with NAD 1983 coordinates

Note: 1 Meter=3937/1200 U.S. Survey Feet

SKETCH OF REFERENCE TIES



Statement of evidence relative to this corner location is on back of page.

I hereby certify that this document and the data contained herein was prepared by me or under my direct supervision.

Ernest J. Reed
Signature

12-8-14
Date

Registration No. 9808

- Land Surveyor, Professional Engineer
 County Surveyor, County Engineer

OFFICE OF THE COUNTY RECORDER

County of _____

I hereby certify that this document was filed in the County Recorder's office at _____ M. on the

_____ day of _____ A.D., 20__

County Recorder _____

BY _____ Deputy

DOCUMENT NO. _____

The original Government post was set by Deputy Surveyor Silas Barnard on October 26, 1855 and 2 bearing trees noted as;

7" White Pine bearing South 80° East at 8 Links

16" White Pine bearing North 45° 45' West at 15 links

No evidence for corner or accessories remains.

No records could be found of subsequent surveys along this line.

No road openings were on record at County Auditor's Office.

In September 2004, E.G. Rud & Sons did a survey for County Road 20 and searched for this corner. An 8' x 40' excavation was done along the centerline of the north south road. This extended from south of a driveway going east and a rock pile now running west and it extended 1 foot into natural ground. No evidence for the corner was found. I talked with Steven Unger, the 4th generation owner of the northwest quarter of the southwest quarter of Section 12 and owner of the east half of the southeast quarter of Section 11. He believed the roadway going east was all on his forty. The rock pile on the north side of the eighty was on the approximate property line. This would agree very close to setting the corner by lost methods. Therefore we set this corner equidistant between the northeast and the southeast corner of Section 11 and on the centerline of the existing gravel road. Ties were taken and Kanabec County Coordinates established on this position.

CERTIFICATE OF LOCATION OF GOVERNMENT CORNER

E 1/4 Corner of Section 11, Township 41, Range 22, 4TH P.M.

STATE OF MINNESOTA, County of KANABEC

At the corner location shown on the sketch:

Set a 1/2 inch iron pipe with cap. Equidistant from NE & SE corner of Sec 11 & on E of road.

Kanabec County U.S. Survey Feet Coordinates
NAD 1983, HARN 1996 Adjustment
Obtained by RTK GPS Observation

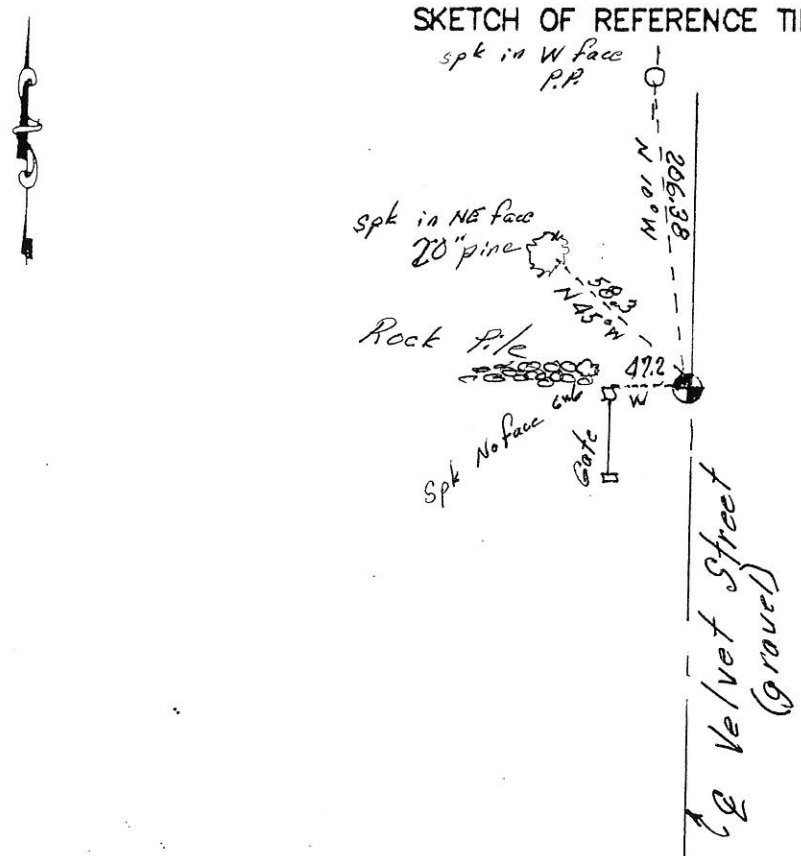
Northing= 215472.43

Easting= 455312.89

Note: NAD 1983, HARN 1996 Adjustment coordinates are NOT compatible with NAD 1983 coordinates

Note: 1 Meter=3937/1200 U.S. Survey Feet

SKETCH OF REFERENCE TIES



Statement of evidence relative to this corner location is on back of page.

I hereby certify that this document and the data contained herein was prepared by me or under my direct supervision.

Ernest J. Red
Signature

Date

Registration No. 9808

- Land Surveyor, Professional Engineer
- County Surveyor, County Engineer

OFFICE OF THE COUNTY RECORDER

County of _____

I hereby certify that this document was filed in the County Recorder's office at _____ M. on the

_____ day of _____ A.D., 20____

County Recorder _____

BY _____ Deputy

DOCUMENT NO. _____

The original Government post was set by Deputy Surveyor Silas Barnard on October 26, 1855 and 2 bearing trees noted as;

7" Balsam bearing South 69° 15' West at 13 Links

14" Balsam bearing North 87° East at 23 links

No evidence for corner or accessories remains.

No records could be found of subsequent survey along this line.

No road openings were on record at County Auditor's Office.

This corner falls in the middle of an open area with no lines of occupation. There is a common owner to the east and west of this line. IN April 2014 in doing survey work in Section 13 and 14, E.G. Rud & Sons set a Kanabec County Monument on line and equidistant from northeast and southeast corner of Section 14, and established Kanabec County Coordinates on this position.