

CERTIFICATE OF LOCATION OF GOVERNMENT CORNER

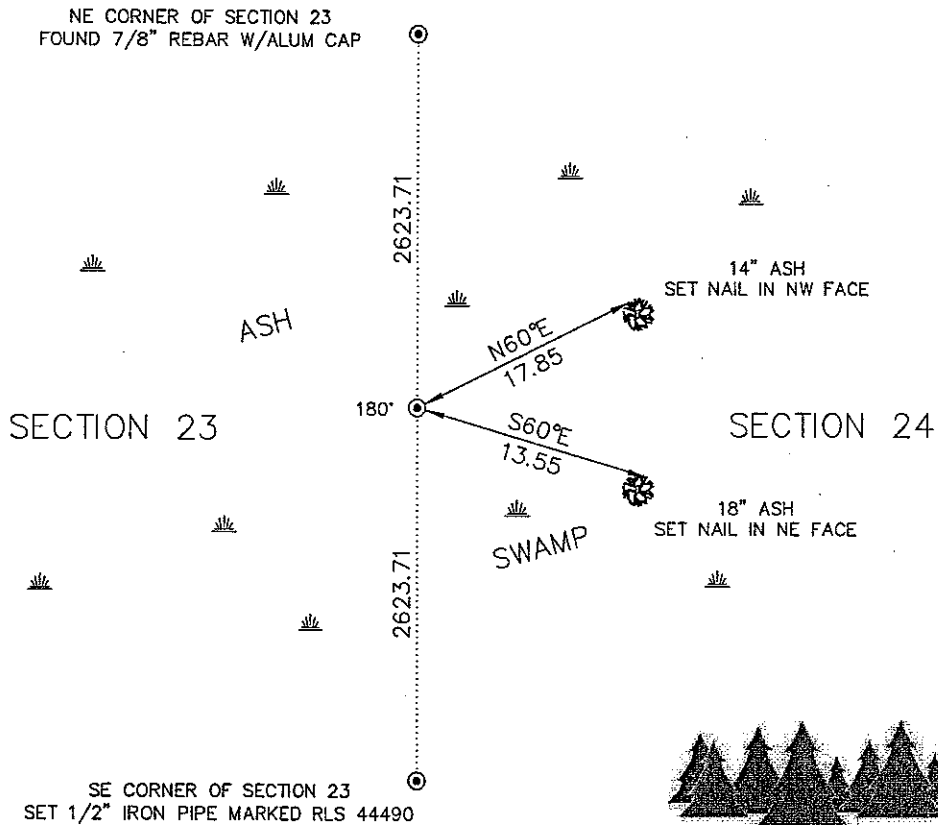
East Quarter Corner of Section ~~26~~²³, Township 41 North, Range 22 West,
4th Principal Meridian, Kanabec County, State of Minnesota

At the corner location shown on the sketch:
On 12/8/2011 set a 1/2" x 72" Iron Pipe Monument with
Plastic Cap marked RLS 44490.

SKETCH OF REFERENCE TIES

NOT TO SCALE

116/21



Kroschel Land Surveyors, Inc.

1639 Main Street North, Suite 6, Pine City, MN 55063
Phone: 320-629-3267 Fax: 320-629-0176

Statement of evidence relative to this corner location is on back of page.

I hereby certify that this document was prepared by me or under my direct supervision and the US public land survey monument record is correct and complete to the best of my knowledge and belief.

Tyler J. Kroschel

1-18-2012

Date

License No. 44490

Land Surveyor

County Surveyor

OFFICE OF THE COUNTY RECORDER

County of Kanabec

I hereby certify that this document was filed in the County Recorder's office at _____ .M. on the _____ day of _____ A.D., 20____

County Recorder _____

By _____, Deputy

DOCUMENT NO. _____

Statement of Evidence:

In October of 1855, Deputy Surveyor Isaac Banker set a post to mark the East Quarter Corner of Section 23, Township 41 North, Range 22 West, 4th Principal Meridian.

Reference ties were taken to:

16 inch W. Cedar at South 56 degrees West a distance of 34 links
20 inch Tamarack at North 51 degrees East a distance of 19 links

All of the original Government corner evidence was searched for. None was found.

There is no resurvey data available for this corner.

In October 2011, I made a survey around Section 23, Township 41 North, Range 22 West, 4th Principal Meridian for Ray Graber to locate existing monuments, lines of occupation and establish search areas.

On 12/8/2011 I made a search with a magnetic locator and by probing the ground. No evidence of the corner was found. I determined the corner lost and set a 1/2" x 72" Iron Pipe with Plastic Cap marked RLS 44490 on-line and halfway between the Northeast and Southeast corners of Section 23. This location is determined to be the best available evidence of the original corner monument location. Established reference ties.



Kroschel Land Surveyors, Inc.

1639 Main Street North, Suite 6, Pine City, MN 55063
Phone: 320-629-3267 Fax: 320-629-0176