

# CERTIFICATE OF LOCATION OF GOVERNMENT CORNER

SOUTHEAST Corner of Section 35, Township 41, Range 22, 4TH P.M.  
STATE OF MINNESOTA, County of KANABEC

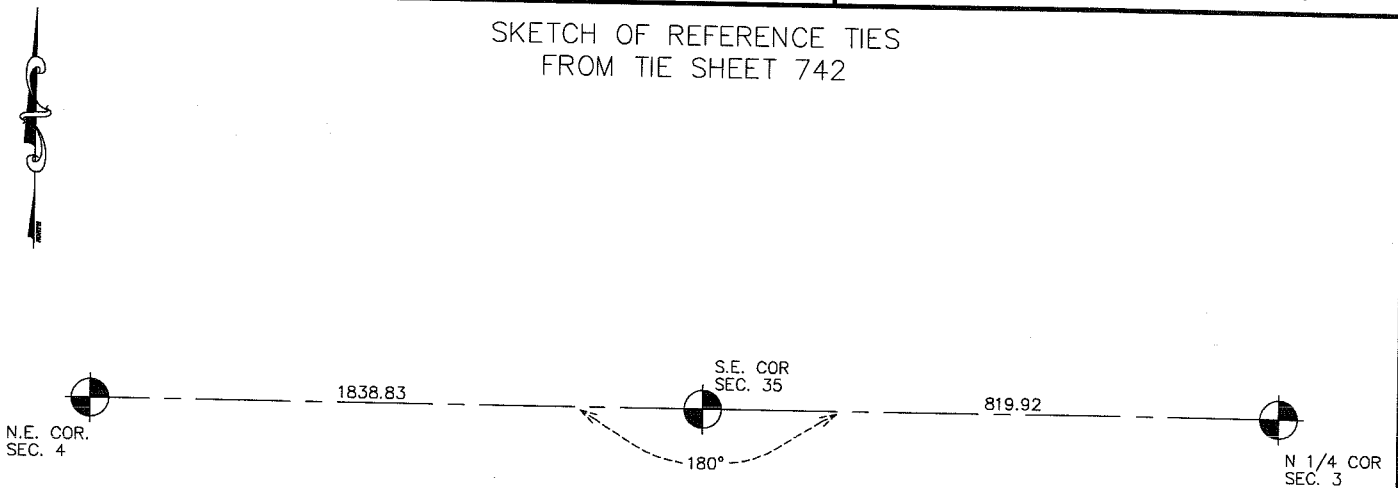
At the corner location shown on the sketch:  
IN MARCH 2005 FOUND THIS CORNER  
AND ESTABLISHED G.P.S. COORDINATES ON ITS LOCATION.

Kanabec County U.S. Survey Feet Coordinates  
NAD 1983, HARN 1996 Adjustment  
Obtained by RTK GPS Observation

Northing= 191677.00  
Easting= 455176.93

Note: NAD 1983, HARN 1996 Adjustment  
coordinates are NOT compatible with  
NAD 1983 coordinates  
Note: 1 Meter=3937/1200 U.S. Survey Feet

SKETCH OF REFERENCE TIES  
FROM TIE SHEET 742



NO TIES AVAILABLE

Statement of evidence relative to this corner location is on back of page.

I hereby certify that this document and the data contained herein was prepared by me or under my direct supervision.

Ernest J. Hub  
Signature

11-18-2005  
Date

Registration No. MINN No 9808  
 Land Surveyor, [ ] Professional Engineer

[ ] County Surveyor, [ ] County Engineer

## OFFICE OF THE COUNTY RECORDER

County of \_\_\_\_\_

I hereby certify that this document was filed in the County Recorder's office at \_\_\_\_\_ M. on the \_\_\_\_\_ day of \_\_\_\_\_ A.D., 20\_\_\_\_

County Recorder \_\_\_\_\_

BY \_\_\_\_\_ Deputy

DOCUMENT NO. \_\_\_\_\_

## STATEMENT OF EVIDENCE

ALL OF THE ORIGINAL BEARING TREES ARE NOW GONE.

THERE IS NO RESURVEY DATA ON FILE FOR THIS CORNER.

IN JANUARY OF 1986, M.B. RUDE RAN A SURVEY ALONG THE TOWNSHIP LINE TO LOCATE THE EXISTING MONUMENTS, LINES OF OCCUPATION AND TO SEARCH THE AREA.

THERE ARE NO LINES OF OCCUPATION NEAR THIS CORNER. A SEARCH WAS MADE FOR EVIDENCE OF THIS CORNER IN JANUARY AND IN APRIL OF 1986, BUT NO EVIDENCE WAS FOUND.

THIS CORNER FALLS IN SWAMP.

THIS CORNER WAS SET ON LINE AND PROPORTIONAL MEASUREMENT BETWEEN THE SOUTHEAST CORNER OF SECTION 31, TOWNSHIP 41, RANGE 21 AND THE SOUTH QUARTER CORNER OF SECTION 35, TOWNSHIP 41, RANGE 22.

IN MARCH 2005 E.G. RUD AND SONS FOUND THIS MONUMENT AND ESTABLISHED KANABEC COUNTY COORDINATES ON THIS POSITION USING G.P.S. EQUIPMENT.